

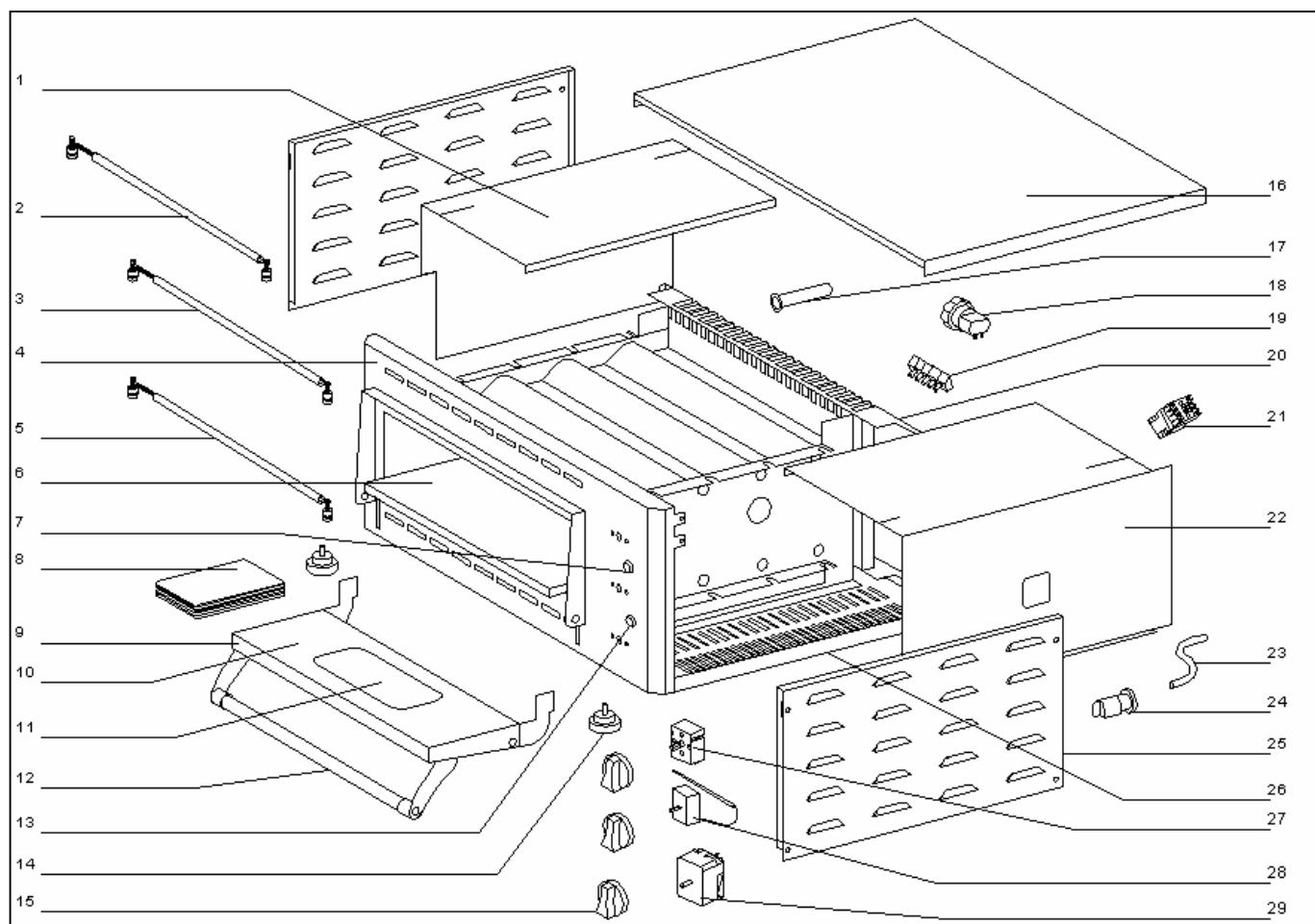
07/2012

Mod: PIZZA-QUICK/43

Production code: PZ 430 S



Diamond
catering equipment



PIZZA OVENS

PZ 430 S / PS 430 D / PS 4302 D

Nomenclature **PZ 430 2D**
Spare parts **PZ 430 2D**

Rep	Code	Qty	Pièce	Spare part
1	35124	1	Défecteur gauche	Left deflector
2	D04039	2	Résistance+tube quartz haut arrière	Rear top quartz tube+heating element
3	D04038	4	Résistance+tube quartz haut avant	Front top quartz tube+heating element
4	35114SE	1	Platine avant	Control panel
5	D04039	4	Résistance + tube quartz bas	Bottom quartz tube+heating element
6	F07024	1	Chamotte	Fire stone
7	A08009	1	Voyant vert	Green pilot light
8	35113	12	Contre poids	Against weight
9	35119SE	1	Porte	Door
10	35120SE	1	Contre porte	Inner door
11	H01075	2	Vitre	Glass
12	A15060	1	Poignée	Handle
13	A08003	1	Voyant orange	Orange pilot light
14	A13017	4	Pied	Foot
15	A14078	3	Bouton	Knob
16	35116	1	Dessus	Top
17	B04104	1	Tube vapeur	Stream tube
18	A18022	1	Support lampe + lampe	Lamp + lamp holder
19	A16014	1	Bornier 6 plots	Six holes domino
20	35123	1	Fond arrière de cuve	Tank back rear
21	A05008	1	Contacteur	Contactor
22	35125	1	Défecteur droit	Right deflector
23	C01010	1	Cable	Cord
24	A10032	1	Serre cable	Cord closer
25	35099	2	Flasque	Side casing
26	35115	1	Socle	Base
27	A02029	1	Minuterie 15 '	Timer 15 '
28	A06042	1	Thermostat	Thermostat
29	A04006	1	Régulateur	Regulator

Congratulations for the acquisition of this upmarket appliance made in France. You chose an appliance which alloys the best technical qualities with a big user-friendliness. We wish you the biggest contentment

1. SECURITY INSTRUCTIONS

Please respect these instructions scrupulously to avoid any risk of fire, electric shock, scald or other wounds and damage. During the use of this appliance, fundamental circumspection of security must always be noticed, such as:

- Take into account the instructions and keep it systematically with the appliance.
- Install the appliance always in instructions respect. A 10 cm distance minimum with the partition or the wall is necessary.
- Protect the appliance from direct light of the sun, frost and humidity.
- Never leave the appliance within the reach of children or disabled persons without surveillance.
- Never move the appliance when it is working or when the surfaces of cooking are still hot.
- Check that the appliance is definitely off before connecting it up or disconnecting it.
- Do not touch the hot surfaces of the appliance. The temperature of the hot surfaces can be very important when the appliance is working. Always use handles and control knobs.
- Do not use the appliance for other functions than determined use.
- Do not leave the electrical cord in contact of hot surfaces.
- The appliance should not be used close to combustible materials.
- During use, look after not to obstruct hearings of aeration of the appliance
- To avoid any electric shock, never plunge the appliance, the cord or plug in water or quite other liquid.
- If the cord is harmed, it must be replaced by the producer, his after sale service or persons of similar skills to avoid any risk.
- Entrust repairs only to a skilled person.
- Use only spare parts of origin.
- At the end of cooking, before cleaning the appliance, do not forget to disconnect it.