

03/2023

Mod: SBET/XC-20-230V/3-

Production code: 228724 - SPECIALE (230V/3)

TECHNICAL SHEET

Doc Nr : VTX2022_01
Date: 09/03/2022
Issued by: R&D – Refrigeration/Oven

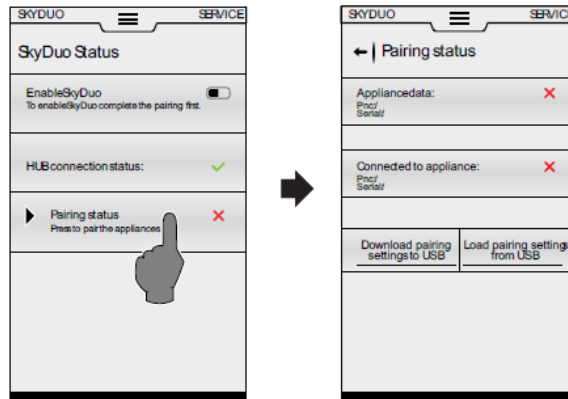
Subject	Sky duo connection		
Model / PNC / Type reference	PNC	model OVEN	
	267260	SKYLINE PREMIUMS OVEN 06 GN 1/1 - GAS - 3-GLASS - FOR SKYDUO	
	267267	SKYLINE PREMIUMS OVEN 6 GN 1/1 - ELECTRIC - BOILER AISI 316 - 3-GLASS - FOR SKYDUO	
	267270	SKYLINE PREMIUMS OVEN 06 GN 1/1 - GAS - BOILER AISI 316 - 3-GLASS - FOR SKYDUO	
	267276	SKYLINE PREMIUMS OVEN 06 GN 1/1 - ELECTRIC - 85MM PITCH - 3-GLASS - FOR SKYDUO	
	267290	SKYLINE PREMIUMS OVEN 06 GN 1/1 - ELECTRIC - 3-GLASS - FOR SKYDUO	
	267262	SKYLINE PREMIUMS OVEN 10 GN 1/1 - GAS - 3-GLASS - FOR SKYDUO	
	267268	SKYLINE PREMIUMS OVEN 10 GN 1/1-ELECTRIC - BOILER AISI 316 - 3-GLASS - FOR SKYDUO	
	267272	SKYLINE PREMIUMS OVEN 10 GN 1/1 - GAS - BOILER AISI 316 - 3-GLASS - FOR SKYDUO	
	267277	SKYLINE PREMIUMS OVEN 10 GN 1/1 - ELECTRIC - 85MM PITCH - 3-GLASS - FOR SKYDUO	
	267292	SKYLINE PREMIUMS OVEN 10 GN 1/1- ELECTRIC - 3-GLASS - FOR SKYDUO	
	PNC	Model BCF	
	725076	SKYLINE CHILLS BLAST CHILLER FREEZER 30/30KG 6 GN 1/1 - TOWER - FOR SKYDUO	
725077	SKYLINE CHILLS BLAST CHILLER FREEZER 50/50KG 10 GN 1/1 - FOR SKYDUO		
Action in Factory	This unit above are already predisposed with connection only to Sky Duo without use the NIU (Wifi or Pro E) and HUB (922705-922697) and kit installation already installed.		
Action in Field	<p>Following the instruction 595403N01 ONLY paragraph B to make a pairing. The only condition to do is connect a cable Ethernet from bcf to oven in the female that is is already predisposed.(instruction 595404Q00 present on board)</p> <div style="border: 1px solid black; padding: 5px; width: fit-content; margin: 10px auto;"> </div>		
Spare parts	The spc of complete UI is 0CK685 (ASS. Touch UI Elux with Ethernet direct Connection) to install the last SW available in web		

Here below the extract of instruction 595403N01 relative to only to pairing between Oven and BCF.

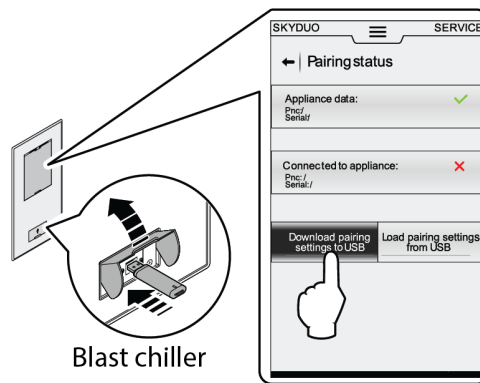
TECHNICAL SHEET

Pairing bcf to oven

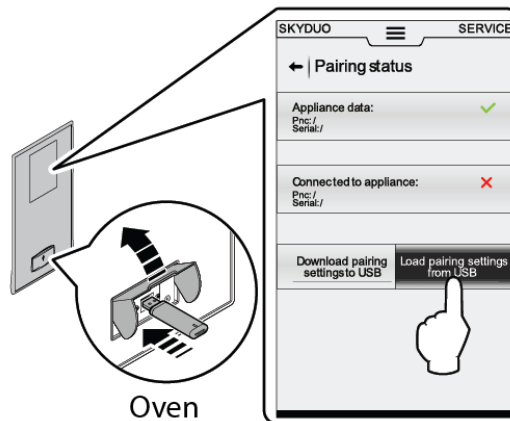
1. Enter in the environment Skyduo (if the icone is not present in bar menu go to in accessory and active the flag SKY DUO.)



3. Enter in pairing status
4. Insert a USB pen drive into the corresponding socket of the bcf and touch the button to download the information for pairing the blast chiller with the oven

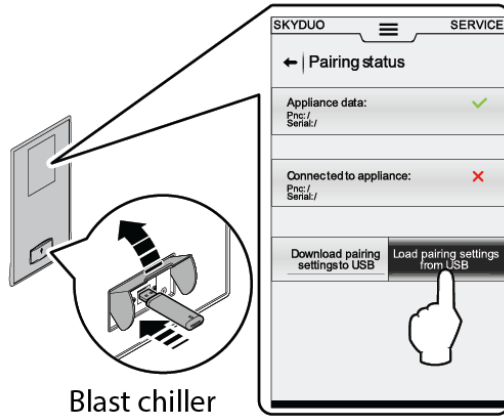


6. Repeat the same procedure for the oven to skyduo and insert the usb



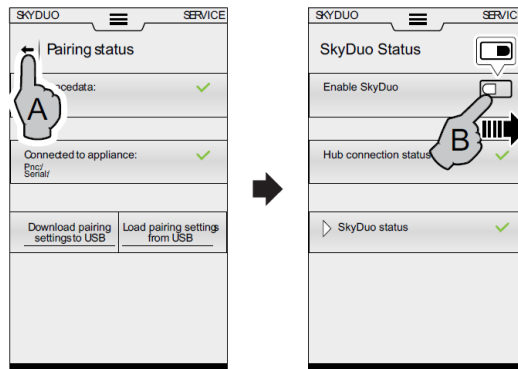
8. Touch the button to upload the information to complete the pair of the bcf with the oven
9. Remove, again, the USB pen drive from the oven and insert it into bcf socket on chiller. Touch the button to upload the information to complete the pair of the oven with the blast chiller.

TECHNICAL SHEET



10. Blast chiller

11. Now both unit are pair, information of both pnc are visible on screen



12.

13. If necessary active the button