

05/2012

Mod: NT22/G-(230/1)

Production code: P011F01009



Diamond
catering equipment

KNEADING MACHINE

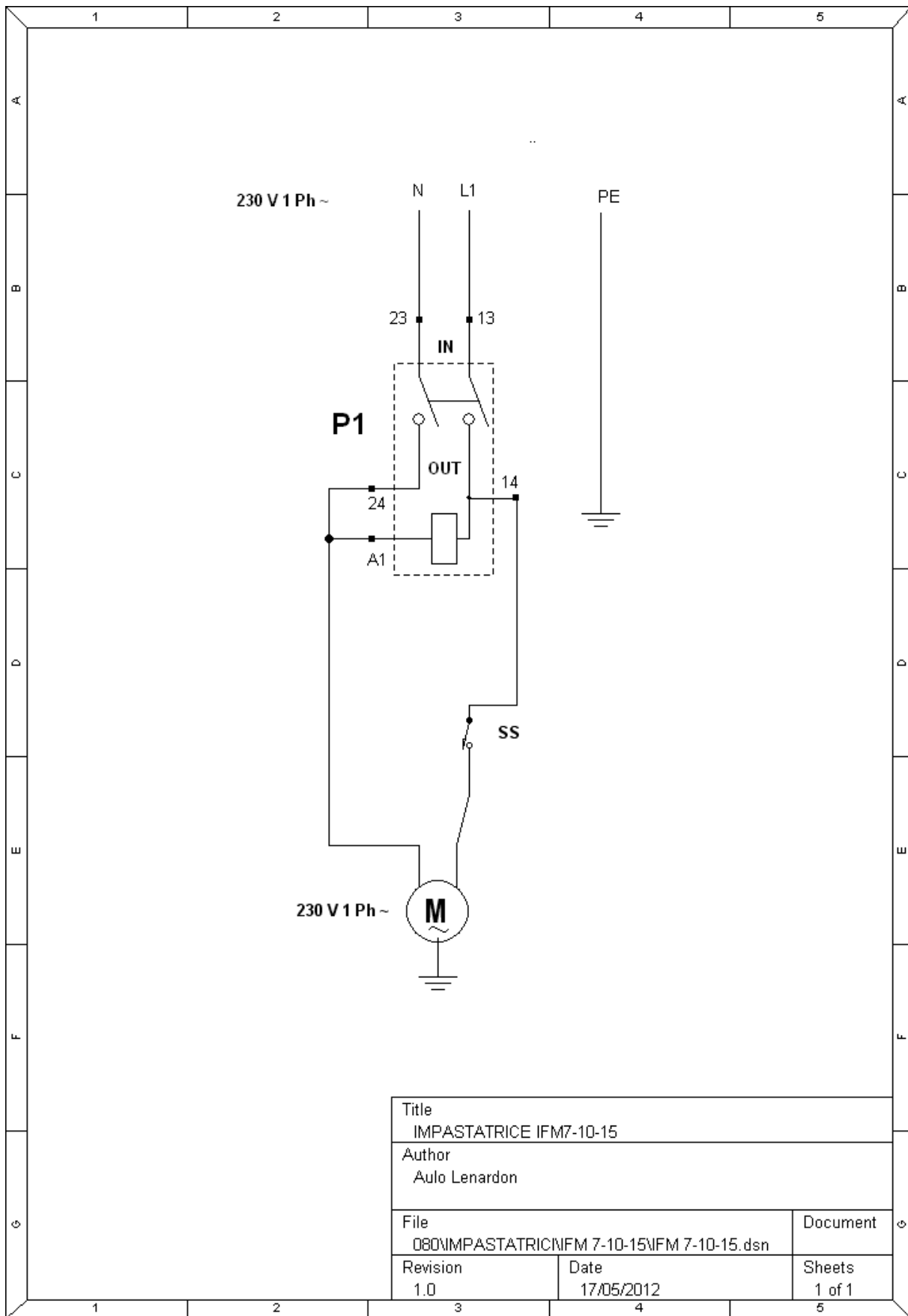


IFM7 ÷ IFM10 ÷ NT10/G-(230/1) ÷ IFM15
IF17 ÷ IF22 ÷ IF33 ÷ IF42 ÷ IF53
IFM17 ÷ IFM22 ÷ NT22/G-(230/1) ÷ IFM33 ÷ NT33/G-(230/1)
IR17 ÷ IR22 ÷ IR33 ÷ IR42 ÷ IR53
IRM17 ÷ IRM22

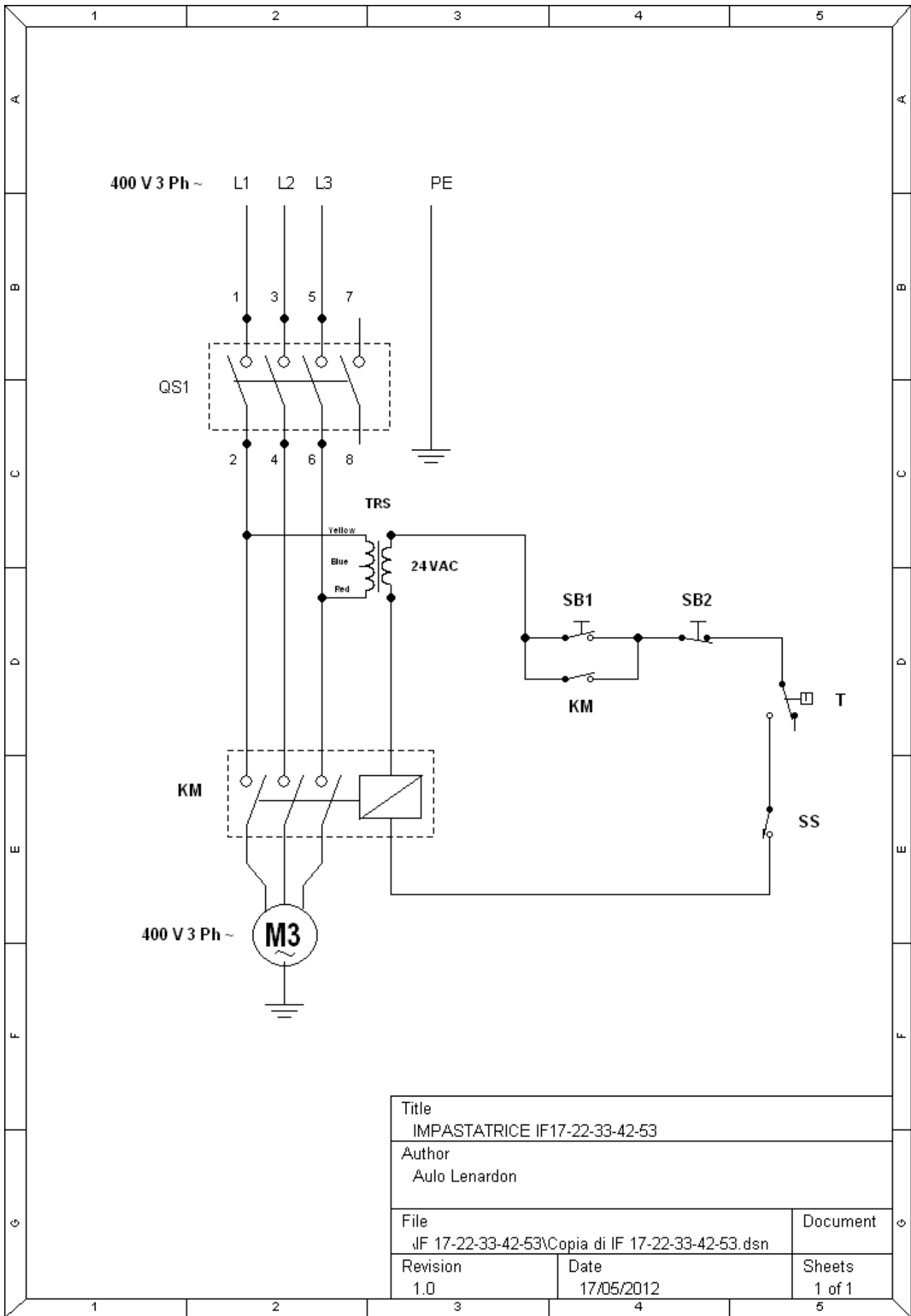


**Reseller Stamp for
Warranty**

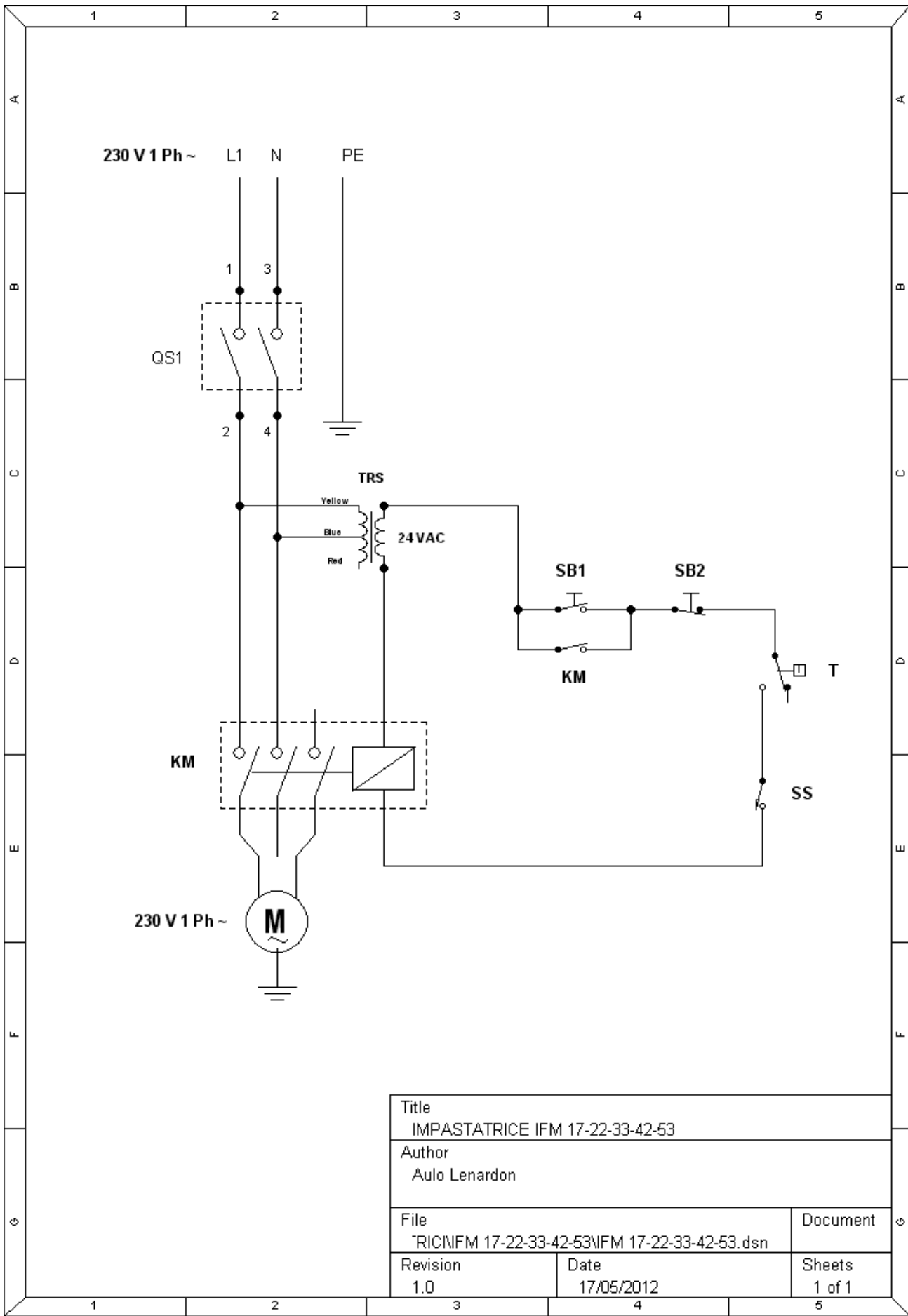
ELECTRICAL SYSTEM



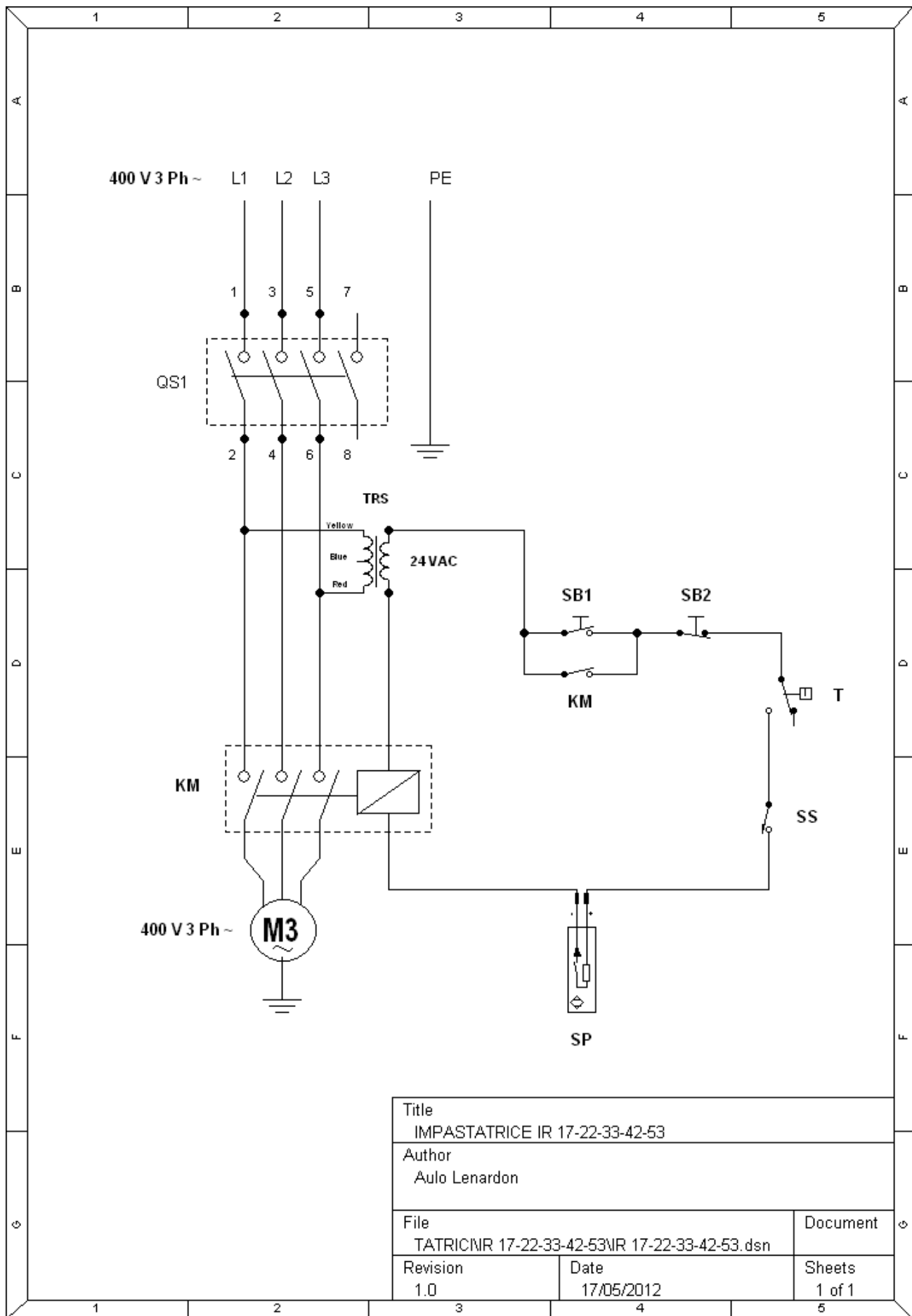
Title IMPASTATRICE IFM7-10-15		
Author Aulo Lenardon		
File 080\IMPASTATRICE\IFM 7-10-15\IFM 7-10-15.dsn	Document	
Revision 1.0	Date 17/05/2012	Sheets 1 of 1



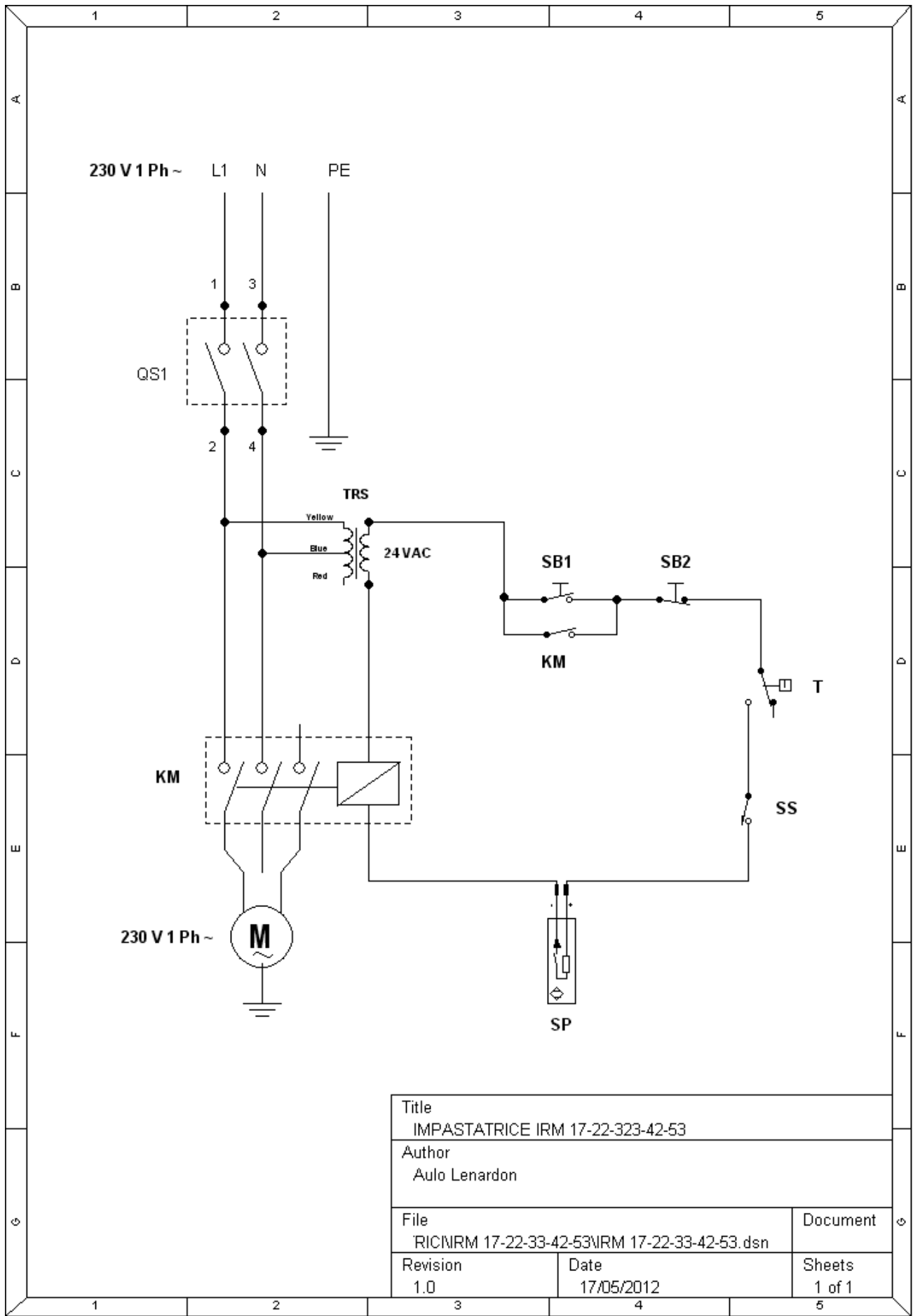
Title		
IMPASTATRICE IF17-22-33-42-53		
Author		
Aulo Lenardon		
File		Document
JF 17-22-33-42-53\Copia di IF 17-22-33-42-53.dsn		
Revision	Date	Sheets
1.0	17/05/2012	1 of 1



Title IMPASTATRICE IFM 17-22-33-42-53		
Author Aulo Lenardon		
File "RICNFM 17-22-33-42-53\IFM 17-22-33-42-53.dsn	Document	
Revision 1.0	Date 17/05/2012	Sheets 1 of 1



Title		
IMPASTATRICE IR 17-22-33-42-53		
Author		
Aulo Lenardon		
File	Document	
TATRICNR 17-22-33-42-53\NR 17-22-33-42-53.dsn		
Revision	Date	Sheets
1.0	17/05/2012	1 of 1



Title IMPASTATRICE IRM 17-22-323-42-53		
Author Auto Lenardon		
File 'RICNRM 17-22-33-42-53\IRM 17-22-33-42-53.dsn	Document	
Revision 1.0	Date 17/05/2012	Sheets 1 of 1

Legend	
GS	Main switch
T	Transformer
PT	Motor Thermal Protection
SP	Proximity sensor
SS	End of emergency limit
SB2	Stop Button
SB1	Starter Button
KM	Switch
M	Motor