

MOD : CEV30/6-15

Production code : NEDS16

Asian Cooking - Electric Steamer Electric - Dim Sum Steamer / Slim

- CEV30/6-15



Due to continuous technical development, the image shown may not represent the latest design of the unit.

DESCRIPTION

Compact electric steamer with six dim sum trays steaming capacity. Equipped with high-efficient heaters with a total connected load of 12 kW.

Equipped with a salt-resistant water tank with a volume of 12 liters for continuous steam, intended to use with Bamboo trays Ø 130 mm. Cold-water supply with automatic water tank filling.

Due to the compact design, the CEV30 steamer is the perfect choice for any Asian restaurants with a smaller footprint.

MAIN FEATURES

- High-efficient heaters with a total connected load of 12 kW.
- Usable for bamboo trays of Ø 130 mm
- Automatic water filling system.
- Three level rotary switch with control knob and function indication lights.
- CE certified unit.

CONSTRUCTION

- Top panel with 1.5 mm thickness. Orbital surface finishing: resistant toward scratches.
- Front panel is constructed of 0.8 mm AISI 304 with satin surface finish.
- Side panel is constructed of 0.8 mm AISI 304 with satin surface finish.
- Tubular, height adjustable (-3...+50 mm) stainless steel legs.
- Types of installations: free standing.
- IPX5 water protection level.

INCLUDED ACCESSORIES

- Dim sum plate with six holes.

OPTIONAL ACCESSORIES

- Power cable type: H07RN-F (5 x 2.5 mm²).

TECHNICAL DATA
External Dimensions

External Dimensions

Width : 400 mm
 Depth : 750 mm
 Height : 850/870 mm

Cooking Surface

Cooking zones : 12 liters, 320 x 475 mm
 Heating zones : 1 x 12 kW
 Control type : Modulating temperature control

Electrical Supply Data

Total connected load : 12 kW
 Voltage : 400V, 3PNE AC /50-60Hz
 Recommended fuse : 20 A (slow)

Connections

Water : DN 15 (1/2")
 Drain : DN 25 (1")

Heat & Steam Emissions

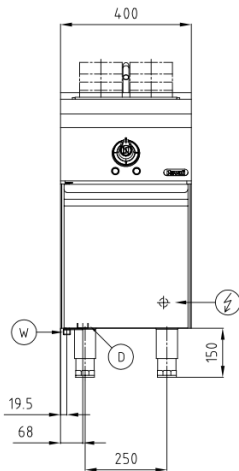
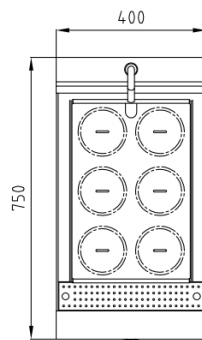
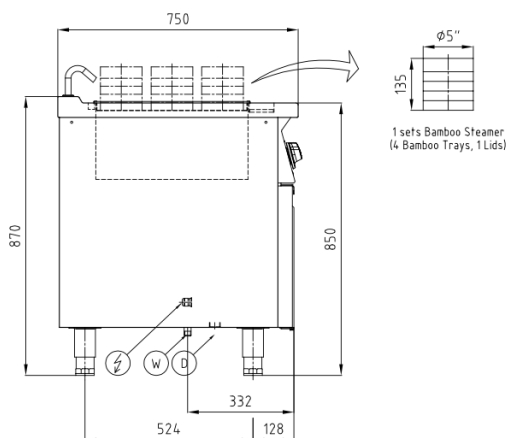
Direct heat emission : 1.44 kW
 Latent heat emission : 2.16 kW
 Steam emission : 3.18 kg/h

PACKAGING DATA

Width : 480 mm
 Depth : 850 mm
 Height : 1160 mm
 Volume : 0.48 m³

WEIGHT

Net Weight : 47 kg
 Gross Weight : 59 kg

FRONT

TOP

SIDE


*Overall dimension in mm