



MOD : CA1/3-P9H

Production code : 110079V0129

04/2026

Installation and operating instructions

Drawer unit



MODEL :

CA1/2-P9H

-

CA1/3-P9H

Index

1.	General Information.....	15
2.	Assembly Instructions	15
	2.1. Remove the refrigerated counter door	15
	2.2. Application the slides to the drawers	18
	2.3. Instation the drawer spacer.....	19
	2.4. Placement of the drawers	22
	2.5. Leveling drawers	23

1. GENERAL INFORMATION

This document describes the procedure for replacing a door with drawers in refrigerated counter. For this assembly you will only need a screwdriver and a 3 mm drill bit.

2. ASSEMBLY INSTRUCTIONS

2.1. REMOVE THE REFRIGERATED COUNTER DOOR

To remove the door you should: unscrew and remove screws from door bottom support (Photo 1). This support will not be refitted. Pay attention to the spring pressure on the lower hinge).



Photo 1: Door bottom support.

Remove the door (Photo 2).



Photo 2: Door removed.

Unscrew the screw (black) which hold the top, remove the plastic spacer and remove the upper door support (Photo 3). This support will not be put back on the refrigerated counter, it will be replaced by a new support. Please note that the screw (black) which hold the top should be inserted into the new support.



Photo 3: Upper door support.

Place the new support and fix the top (Photo 4).



Photo 4: New lower support.

Remove the rails from the side and evaporator protection areas, and place the rails with a smaller flap.



Be careful to always place the earth symbol face down.



2.2. APPLICATION THE SLIDES TO THE DRAWERS

Two slides are used for each drawer (Photo 5). The slides are different due to their fit to the refrigerated counter.

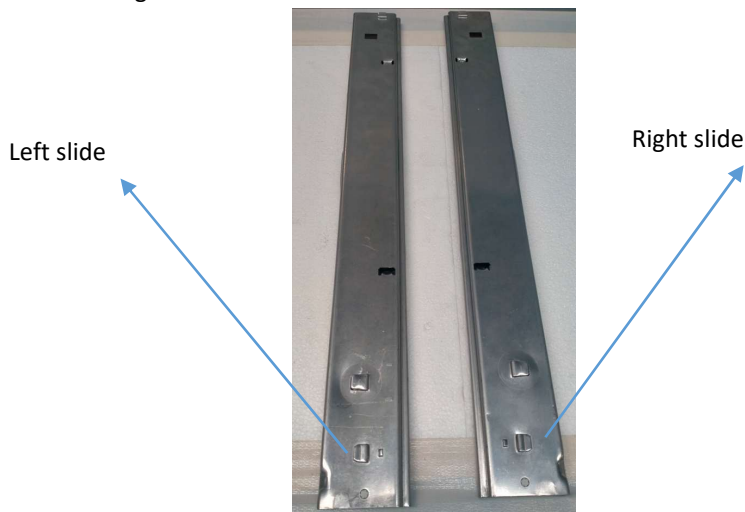


Photo 5: Drawer slides (left and right).

Apply the slides on refrigerated counter rails at the same height on the right and left side.

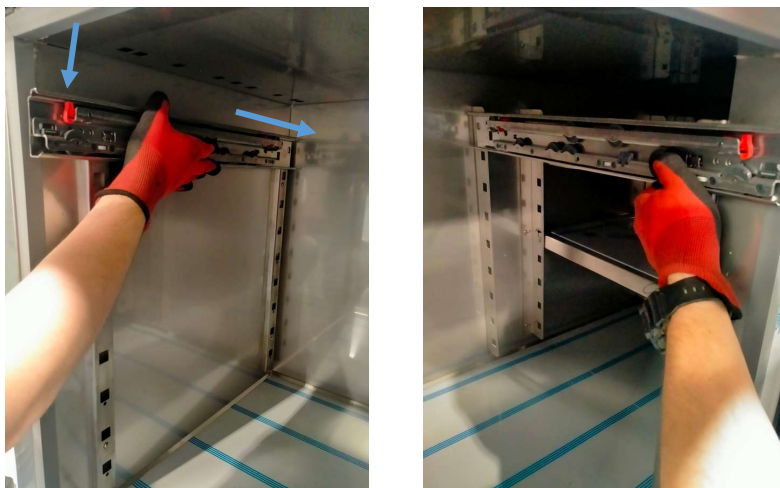


Photo 6: Application of slides.

First engage the slide in the back and then at the front (Photo 6).

2.3. INSTALATION THE DRAWER SPACER

The spacer is placed between the drawers. The spacer is fixed to the refrigerated counter with two supports (Photo 7).

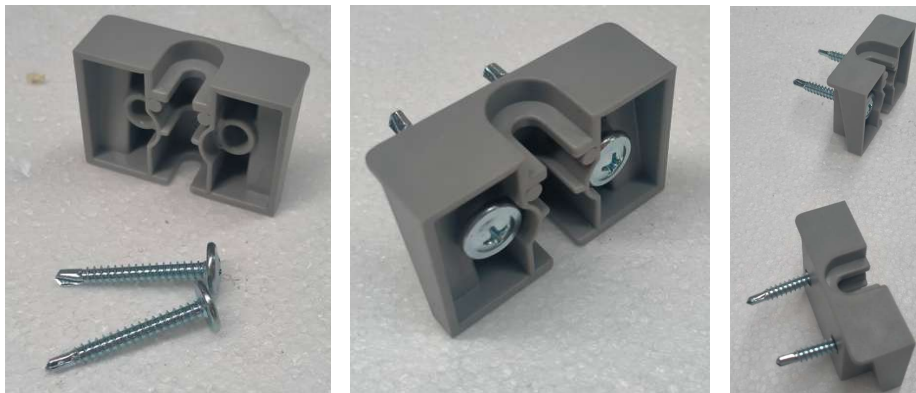


Photo 7: Supports to fix the separator.

Drill the refrigerated counter with a 3 mm drill bit in the holes on the sides of the cabinet, corresponding to the height of the drawer. Fix a support on each side like shows the photos bellow(Photo 8).



Photo 8: Installation of spacer supports.

The spacer is fixed to the refrigerated counter with two self-drilling screws (4.2 x 32) (Photo 9).



Photo 9: Drawer spacer.

Place a nut on each side of the space as shown the photos below (Photo 10).



Photo 10: Assembling position of the spacers, with nuts and screws.

Fit the spacer into the supports placed on the sides of the refrigerated counter (Photo 11).



Photo 11: Placing the spacer.

Insert screws and tighten them (Photo 12).

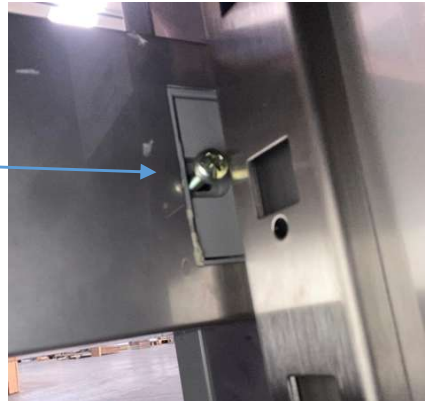


Photo 12: Spacer fixation.

2.4. PLACEMENT THE DRAWERS

Apply the drawers (Photo 13).



Photo 13: Placement of drawers.

At the end of placing the drawers, close the red latches on the slides (take care to prevent the drawer from jumping out when opening it) (Photo 14).

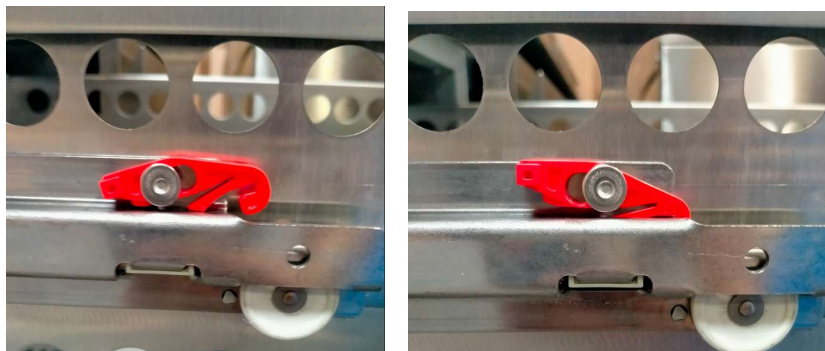


Photo 14: Drawer latch.

2.5. LEVELING DRAWERS

If necessary to level/adjust the drawers, you can do this by adjusting the runner support rails inside the cabinet with a star key (Photo 15). First remove the drawers, adjust the rail and put the drawers back in.

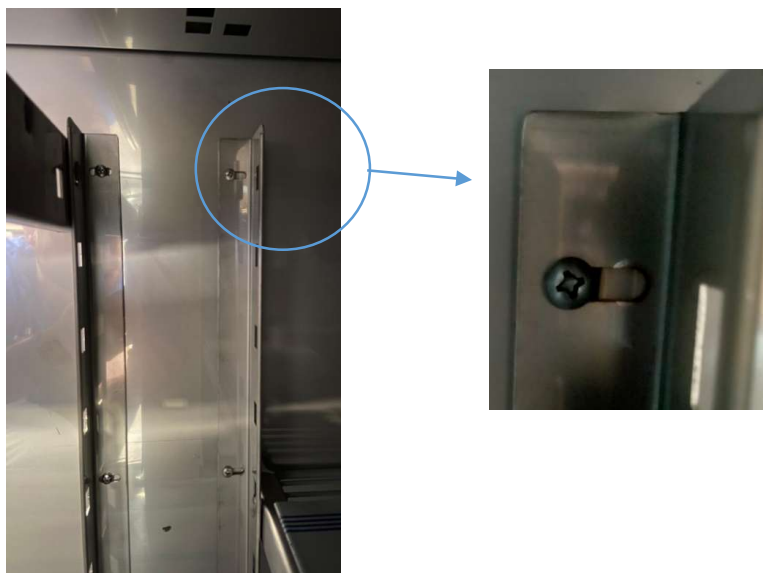


Photo 15: Slide support rail.

Use the gaps screws in the fixing on the drawer front to adjust the height and parallelism with the cabinet to the right and left (Photo 16).



Photo 16: Drawer adjustment.