

**MOD : AC/HV6-10CV-X**

**Production code : 922718**



## Ventilation Equipment Odourless Hood with Fan for 6&10GN 1/1 Electric Oven

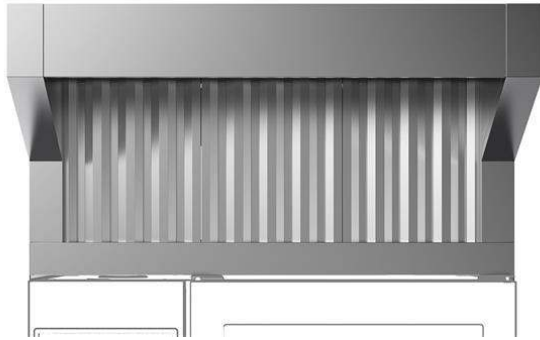
ITEM # \_\_\_\_\_

MODEL # \_\_\_\_\_

NAME # \_\_\_\_\_

SIS # \_\_\_\_\_

AIA # \_\_\_\_\_



922718 (HOOT11E)

Odourless hood with fan for 6 & 10 GN 1/1 electric ovens

### Short Form Specification

Item No. \_\_\_\_\_

- Constructed in 304 AISI stainless steel
- Steam condensation device
- Equipped with labyrinth filters in 304 AISI stainless steel (positioned on front), condensation filter and extra droplets separator acting as a steam-liquid separator; UV system attacks the fat molecules eliminating unpleasant odours and bacteria; catalyst filter restrain the residual odours and no reacted ozone.
- Built-in fan which automatically controls the air capacity according with the quantity of steam produced
- The frontal ventilation is activated when the door of the oven is opened and thanks to a direct software connected to the oven, the hood automatically activates fan power and odor absorption based on real oven activity
- Suitable for installation on ELECTRIC LW COMBI OVEN 6 & 10 GN 1/1.

### Main Features

- Filtering surface protects against fire hazard.
- No need for an external exhaust pipe, thus eliminating carpentry costs.
- Complete ventilation system which eliminates the need for an exhaust duct with external connection.
- Fan motor with 3 automatic speeds:
  - Low speed when door is closed and valve is closed;
  - Medium speed when door is closed and valve is open;
  - High speed when door is open.
- Frontal labyrinth and condensation filters are easy to remove and cleanable in a dishwasher.
- UV system attacks the fat molecules eliminating unpleasant odours and bacteria; post-filters restrain the residual odours and no reacted ozone.
- Possibility to activate air purification system when the oven is in stand by (not cooking) or in cleaning phase.
- The cable connection between the hood and the oven makes possible the communication between them. Connection of the hood to the oven's software automatically activates fan power and odour absorption based on real oven activity.
- The hood and the oven are synchronized: the hood switches On/Off when the oven starts/stops; based on real oven activity the hood automatically activates Hi/Medium/Low fan power for odour absorption.
- Can be used with 6 GN 1/1 and 10 GN 1/1 electric LW combi ovens.
- Double step door opening (PNC 922265) is suggested to improve filtering performance.
- Calculate the air exchange rate for the complete kitchen environment and ensure the compliance with ventilation norms (e.g. VDI 2052 Standard for ventilation of commercial kitchens - or any local reference). An insufficient air exchange rate may cause malfunctioning of the hood.

### Construction

- Constructed entirely in 304 AISI stainless steel.
- Must be installed in a space where normal aeration, according to regulations, is present.
- Multiple filtration systems:
  - prefiltering of exhaust steam through stainless steel labyrinth filters;
  - condensation filter and extra droplets separator acting as a steam-liquid separator;
  - UV system attacks the fat molecules eliminating unpleasant odours and bacteria;
  - catalyst filter restrain the residual odours and no reacted ozone.
- Automatic door opening activation system.
- Developed and produced in ISO 9001, ISO 14001 and ISO 50001 certified factory.

### Sustainability

- System guarantees correct suction as well as high energy saving.

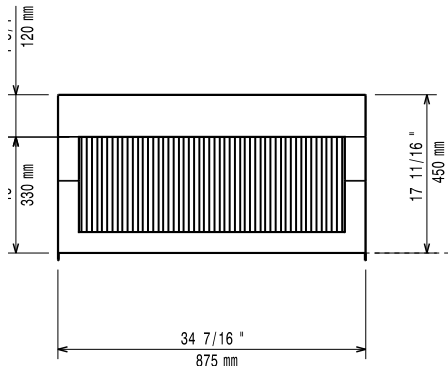
APPROVAL: \_\_\_\_\_



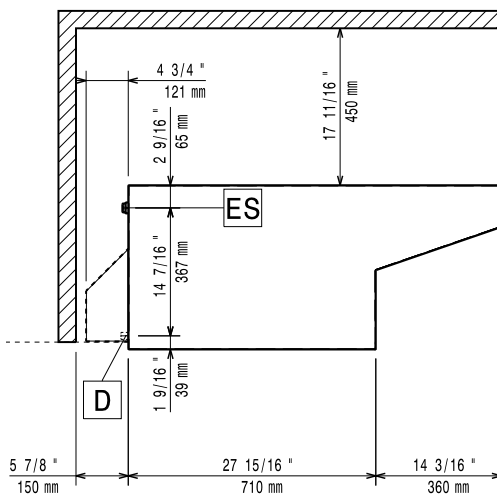


# Ventilation Equipment Odourless Hood with Fan for 6&10GN 1/1 Electric Oven

**Front**

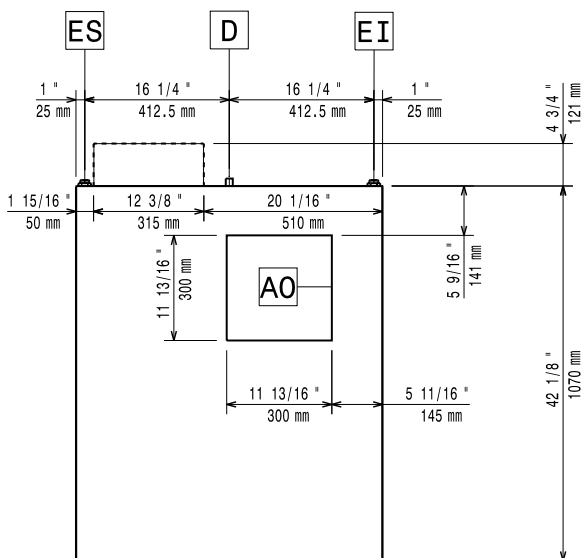


**Side**



ES = Electrical inlet (power)

**Top**



## Electric

Supply voltage: 220-240 V/1 ph/50 Hz  
Default Installed Power: 0.82 kW

## Key Information:

External dimensions, Width: 875 mm  
External dimensions, Depth: 1070 mm  
External dimensions, Height: 472 mm  
Net weight: 96 kg

### OPERATION WITH OVEN DOOR CLOSED:

When the hood is turned on, the greasy fumes produced by the oven are pressurized by a small electric fan and are moved across the water condenser.

The sudden temperature change allows for the first degreasing. The water level is controlled by an overflow pipe.

The air is then conveyed to the heating element which raises its temperature and moves it across the catalyst thus further reducing odours. A safety thermoregulator located on the roof of the hood controls the heating elements. If the temperature exceeds a safe temperature, a sound alarm is activated and the entire machine is switched off. The air is finally moved through a special silica gel filter, located on the top of the hood, and then is discharged in the working area.

A dedicated selection is available on the hood's side, to be switched to the second position only when using very high emission cycles (e.g. roast chicken).

### OPERATION WITH OVEN DOOR OPEN:

If the oven door is opened during cooking, the air is drawn by the main electric fan and moved across the labyrinth filters where it is sent at a high speed towards the baffle.

The positioning of the deflector elements forces the air to change direction several times while in the filter, thus making the large air particles come into contact with the filter elements and capturing them. The air is finally moved through a special silica gel filter, located on the top of the hood, and then is discharged in the working area.

## Air Emission:

Air capacity:

Ventilation Equipment  
Odourless Hood with Fan for 6&10GN 1/1 Electric Oven

The company reserves the right to make modifications to the products without prior notice. All information correct at time of printing.