



**MOD : AC/HV6-10-X**

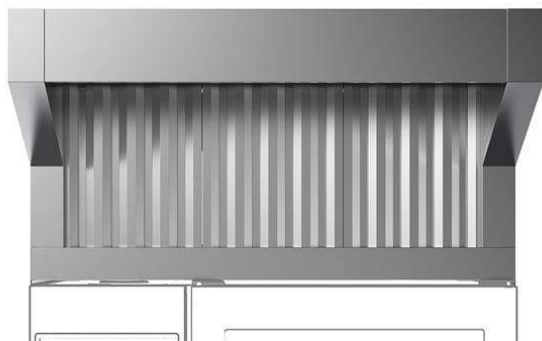
**Production code : 922728**

**02/2026**



## Ventilation Equipment Exhaust Hood with Fan for 6&10 GN1/1 ovens

ITEM # \_\_\_\_\_  
MODEL # \_\_\_\_\_  
NAME # \_\_\_\_\_  
SIS # \_\_\_\_\_  
AIA # \_\_\_\_\_



922728 (HOST11)

Exhaust hood with fan for 6 &  
10 GN 1/1 ovens

### Short Form Specification

#### Item No. \_\_\_\_\_

- Constructed in 304 AISI stainless steel
- Equipped with labyrinth filters in 304 AISI stainless steel (positioned on front)
- Built-in fan which automatically controls the air capacity according with the quantity of steam produced
- The frontal ventilation is activated when the door of the oven is opened and thanks to a direct software connected to the oven, the hood automatically activates fan power and odor absorption based on real oven activity
- Suitable for installation on LW COMBI OVENS 6 & 10 GN 1/1.

### Main Features

- Filtering surface protects against fire hazard.
- Requires connection to an external exhaust air duct.
- Fan motor with 3 automatic speeds:
  - Low speed when door is closed and valve is closed;
  - Medium speed when door is closed and valve is open;
  - High speed when door is open.
- Frontal labyrinth and condensation filters are easy to remove and cleanable in a dishwasher.
- The cable connection between the hood and the oven makes possible the communication between them. Connection of the hood to the oven's software automatically activates fan power and odour absorption based on real oven activity.
- The hood and the oven are synchronized: the hood switches On/Off when the oven starts/stops; based on real oven activity the hood automatically activates Hi/Medium/Low fan power for odour absorption.
- Can be used with 6 and 10 GN 1/1 LW combi ovens.
- Double step door opening (PNC 922265) is suggested to improve filtering performance.
- Calculate the air exchange rate for the complete kitchen environment and ensure the compliance with ventilation norms (e.g. VDI 2052 Standard for ventilation of commercial kitchens - or any local reference). An insufficient air exchange rate may cause malfunctioning of the hood.

### Construction

- Constructed entirely in 304 AISI stainless steel.
- Must be installed in a space where normal aeration, according to regulations, is present.
- Prefiltering of exhaust steam through stainless steel labyrinth filters.
- Automatic door opening activation system.
- Developed and produced in ISO 9001, ISO 14001 and ISO 50001 certified factory.

### Sustainability

- System guarantees correct suction as well as high energy saving.

APPROVAL: \_\_\_\_\_

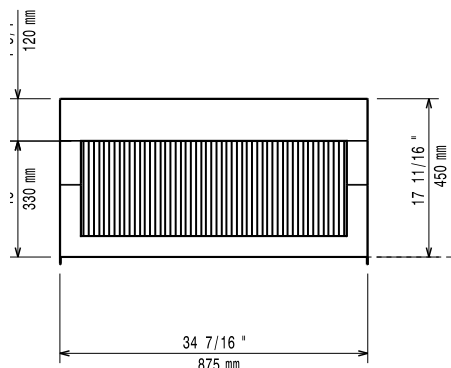
Diamond

Exhaust Hood with Fan for 6&10 GN1/1 ovens  
Ventilation Equipment

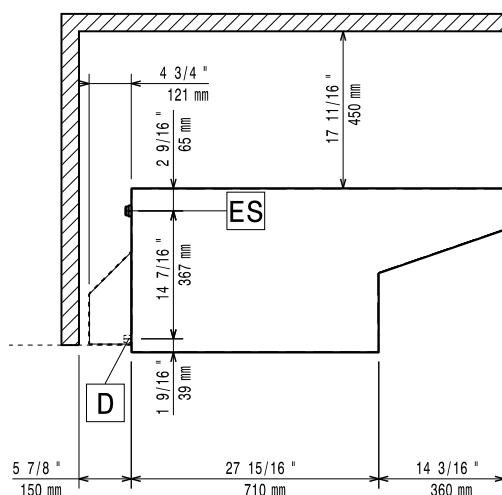


## Ventilation Equipment Exhaust Hood with Fan for 6&10 GN1/1 ovens

### Front

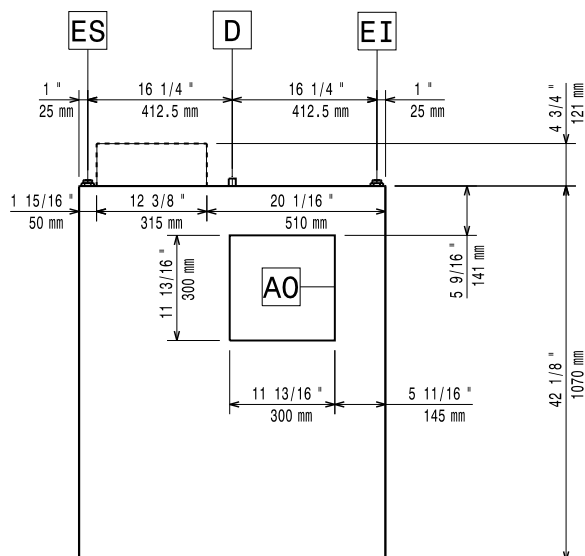


### Side



ES = Electrical inlet (power)

### Top



### Electric

Supply voltage: 220-240 V/1 ph/50 Hz

Default Installed Power: 0.47 kW

Built-in Fan Power:

### Key Information:

External dimensions, Width: 875 mm

External dimensions, Depth: 1070 mm

External dimensions, Height: 450 mm

Net weight: 57 kg

### Air Emission:

Air capacity:

Ventilation Equipment  
Exhaust Hood with Fan for 6&10 GN1/1 ovens

The company reserves the right to make modifications to the products without prior notice. All information correct at time of printing.

2025.12.28

