



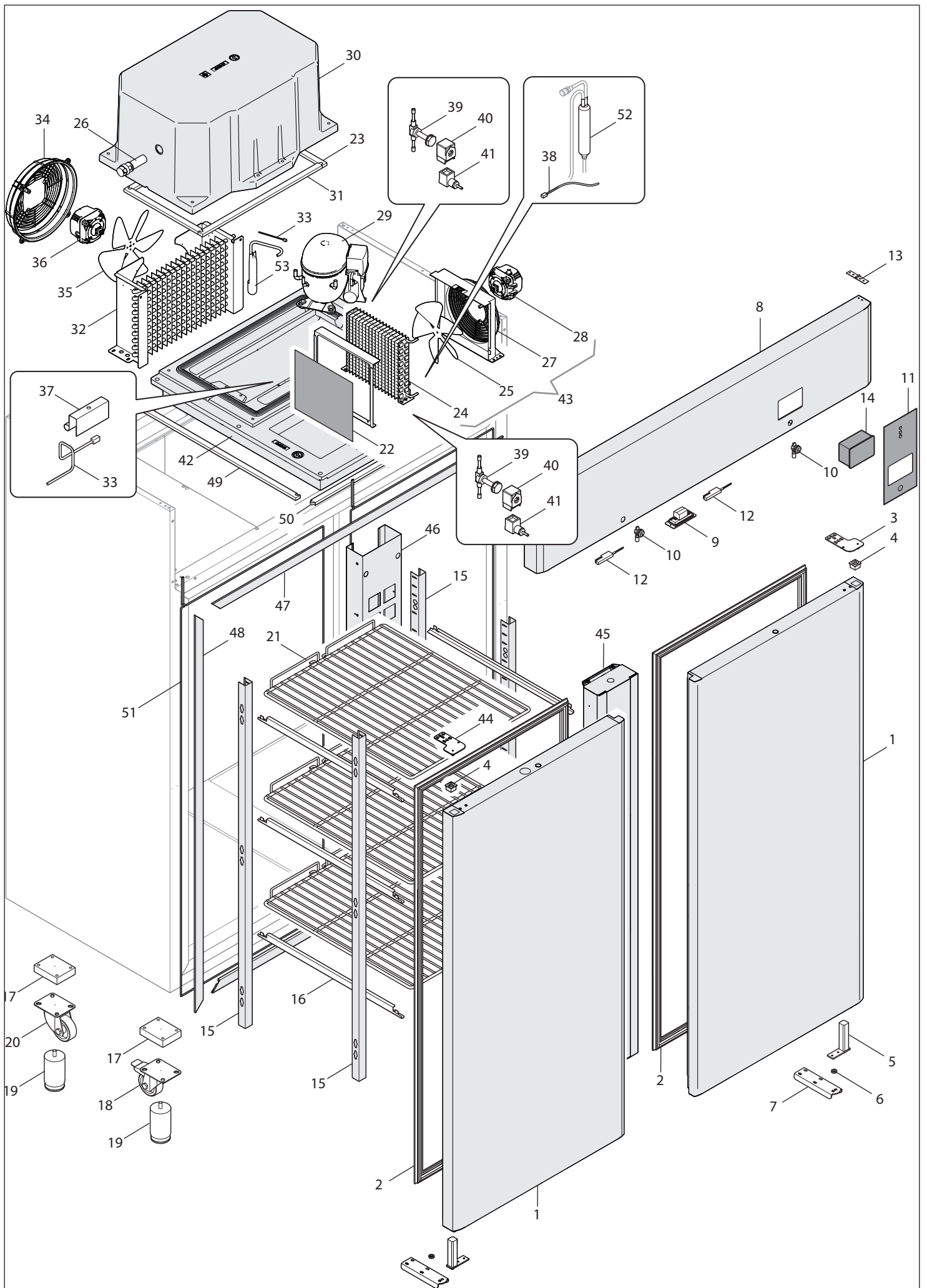
MOD : AE2N/PL4

Production code : AE14X2511-DM

Jet engine compressor drawings

Creative
MARKET

09/2025



No.	CODE	DESCRIPTION	VOLT. / FREQ.	VALIDITY DATE
1	44382	EVOLUTION GASTRONOMY CABINET DOOR ASSEMBLY		
2	40605	1/1 GASTRONOMY DOOR SEAL		
3	37663	TOP RH HINGE		
4	37655	PIVOT HOLDING LOCK		
5	37654	PIVOT HOLDING HINGE		
6	38181	WASHER Ø10.5x17		
7	37656	BOTTOM HINGE		
8	44537	1400 EVOLUTION PANEL ASSEMBLY [EVJ]		
9	40607	LED SPOTLIGHT	230V 50/60Hz	
10	26447	BOX LOCK		
11	44388	EVOLUTION CABINET MEMBRANE		
12	18762	MAGNETIC MICRO		
13	28045	BOOK HINGE 80x17		
14	44399	EVJ215 THERMOSTAT	230V	
15	40713	1/1 GASTRONOMY RACK L=30		
16	35740	GASTRONOMY CABINET SLIDE		
17	25523	POLYETHYLENE PLINTH 100x80x25 x WHEELS 80		
18	27720	Ø80 STAINLESS STEEL WHEEL WITH BRAKE		
18	26512	Ø80 GALVANIZED WHEEL WITH BRAKE		
19	34540	STAINLESS STEEL FOOT 115/165 M10x20		
19	34541	ABS FOOT 115/165 M10x20		
20	27719	Ø80 STAINLESS STEEL WHEEL		
20	26511	Ø80 GALVANIZED WHEEL		
21	30199	2/1 GASTRONOMY PLASTIC GRILLE WITH LOCK		
22	38629	MESH FILTER 310X280		
23	40686	ADHESIVE RUBBER MAT 20x10 L=333		
24	37303	FINNED BATTERY (STVF194)		
25	37292	Ø254 PLASTIC SHOVEL		
26	34944	MICROELEBAR COMPENSATION VALVE		
27	37299	ø254 GRILLE		
28	37295	MOTOR	220/240V 50/60Hz	
29	39740	NT2180U-CSR R290 EVAPORATOR	230V 50Hz	
29	41149	NEU2168U-CSR R290 EVAPORATOR	208/230 60Hz	
30	41383	POLYSTYRENE UNIT LID WITH HOLE		
31	40439	ADHESIVE RUBBER MAT 20x10 L=530		
32	40714	EVAPORATOR 4T 11R L=350 P5		
33	29657	NTC PROBE L=3 IP65		
34	30329	CAPACITOR GRILLE		
35	18640	Ø230 SUCTION FAN		
36	37887	MOTOR	220/240V 50/60Hz	
37	37062	PROBE DOOR		
38	20286	NTC PROBE L=1.5 IP65		
39	38133	SOLENOID VALVE		
40	32348	COIL	220/240V 50/60Hz	
41	00715	PG11 CONNECTOR		
42	40425	UNIT BASE		
43	36337	CAPACITOR (STVF194)		
44	37664	TOP LH HINGE		
45	40543	ASS. 1400 VERTICAL UPRIGHT		
46	40709	1400 BACK RACK SUPPORT		
47	40553	BODY HORIZONTAL PROFILE COVER		
48	40418	BODY VERTICAL PROFILE COVER		
49	40600	RUBBER GASKET 20x6 L=625		
50	34653	RUBBER GASKET 20x6 L=645		

Cod: AE14X2511

S.N: _____

Mod: AR EVOLUTION 1400 -22/-15V 2P R290

Rev: 00 - 07/2023

No.	CODE	DESCRIPTION	VOLT. / FREQ.	VALIDITY DATE
51	18862	DOORFRAME RESISTOR L = 6560	230V 46W	
52	19447	3-WAY RECEIVER DRYER TO BE WELDED		
53	31377	ACCUMULATOR		