



**MOD : GTP-10/3R**

**Production code : LF10DD-R**

Jet engine compressor drawings

Creative  
MARKET

01/2026

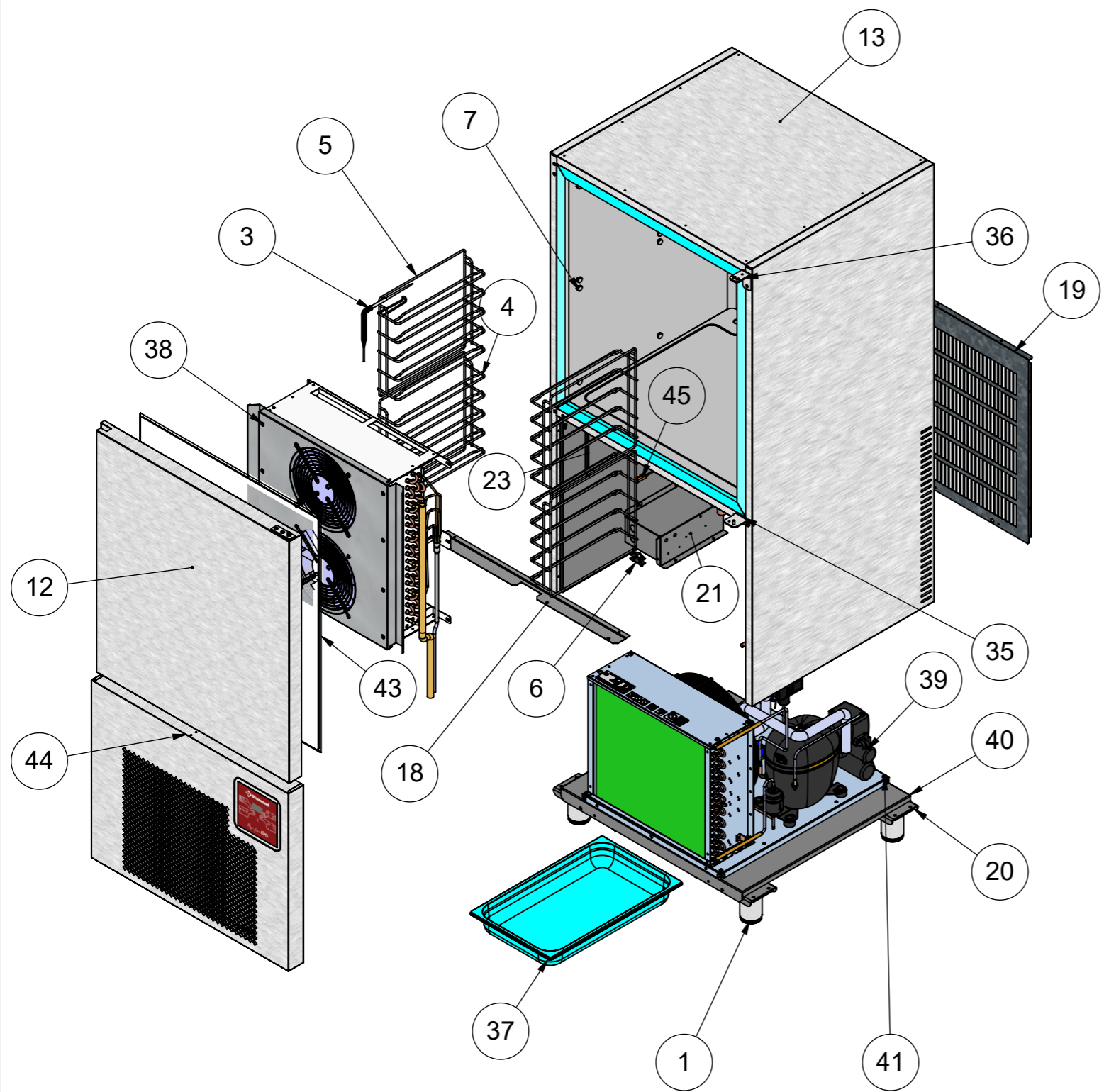
PIEGHE IN GIU'  
PIEGHE IN SU'

This drawing contains confidential information and is the property of DIAMOND, without whose permission it may not be copied, shown or handed to a third party or otherwise used, and it is to be returned promptly upon request to the DIAMOND, which is responsible for the drawing. SUPPLY SPECIFICATIONS / SPECIFICHE DI FORNITURA  
Remove all punching burrs after machining or press-forming process. draft angle 2°  
fillets not quoted R=2, internal bend radius as thickness, chamfers not quoted: 0.5x45°  
For other specifications please contact the technical department.

0.4	0.2/100
0.4	0.2/100
0.25	0.2/100

Angles ± 1°  
Angoli ± 1°

General tolerance - Tolleranza generale: UNI EN 227 68/1 - C	
Length and diam. Lungh. e diametri	> 315 1000 2000 4000
Tolerance Tolleranza	± 0.2 ± 0.5 ± 0.8 ± 1.2 ± 2.0 ± 3.0 ± 4.0 ± 5.0



Pos.	Qtà	CODICE/Code	Rev	DESCRIZIONE/Description	OR	Material	Sp.	SIMMETRICO
45	1	TB1442	01	MICRO MAGNETICO				
44	1	0061A96230100	00	ASSIEME CRUSCOTTO PROFI LINE				
43	1	A50500031	00	GUARNIZIONE MAGNETICA LF10TE	-			
40	1	TB921_01	01	BASAMENTO GRUPPO	ZINCATA		1.5	
39	1	A50500092	00	UC R290 NTX2213U 10T	...			
38	1	0061A95230100	00	ASSIEME COMPLETO EVAPORATORE 10T R290				
37	1	PP11065M	01	Bacinella gn1/1 h65	--			
36	1	LV009686_00	01	CERNIERA SUPERIORE PIVOT	AISI 304 SB.		4.0	
35	1	TB633_01	01	CERNIERA INFERIORE	AISI 304 SB.		3.0	
23	1	TB894	01	CAVO 14W/M 230V PC3.2MT PF2x0.9MT			0.8	
21	1	TB721	01	PROTEZIONE IMPIANTO ELETTRICO	ELETTROZINC.		0.8	
20	2	TB920_01	00	TRAVERSA PIEDI	ZINCATA		2.5	
19	1	TB922	00	GRIGLIA POSTERIORE	ZINCATA		0.6	
18	1	LV009672_00	01	ALLINEATORE CRUSCOTTO	AISI 304 2B		1.0	
17	2	TB653	00	DISTANZIALE A MURO	ELETTROZINC.		1.0	
13	1	TB895_01	01	ASS CORPO SCHIUMATO				
12	1	0061A96030100	01	ASSIEME PORTA SCHIUMATA 10T PROFI LINE				
7	16	LV009572_00	02	PERNO REGGI GRIGLIE	AISI 303 2B		0.8	
6	1	LV006942_00	01	BLOCCACAVI IN PLASTICA PA238RO	PLASTICA NERA		2.0	
5	1	A50400011	02	REGGIGRIGLIA 5 TEGLIE CON SPILLONE				
4	3	A50400012	02	REGGIGRIGLIA 5 TEGLIE				Spesso re@TB 861_SL DPRT
3	1	TB861	00	SONDA PTC SPILLONE TPE 2.7MT	AISI 304 SB.			
1	4	A50500067	00	PIEDINO DIAM.67 (ASS.2") BASE 13 H86	-			

	<b>DIAMOND EUROPE SA/NV</b>	FINITURA/Finish		PESO/Weight (kg) <b>166.7</b>
		RIFERIMENTO / Reference <b>GTP-10/3R</b>	SCALA/Scale <b>1:50</b>	DATA/Date <b>31/10/25</b>
DENOMINAZIONE/Name <b>BLAST CHILLER 10T TOUCH R290</b>		GREZZO/Stock size <b>mm</b>	ORIENTAMENTO 	FIRMA/Sign <b>MG</b>
<small>Il presente disegno è proprietà della Diamond Non può essere copiato o mostrato a terzi senza preventiva autorizzazione scritta. La Società tutelerà a termini di legge. This drawing is property of Diamond and may not be reproduced nor disclosed to third parties without the written consent of Diamond Any abuse will be prosecuted.</small>				REV/Rev

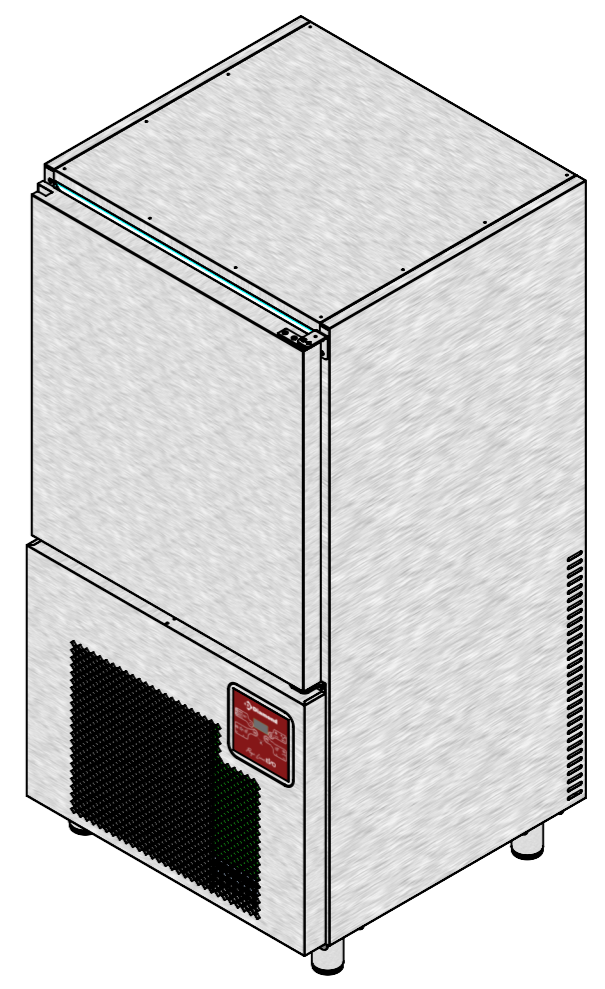
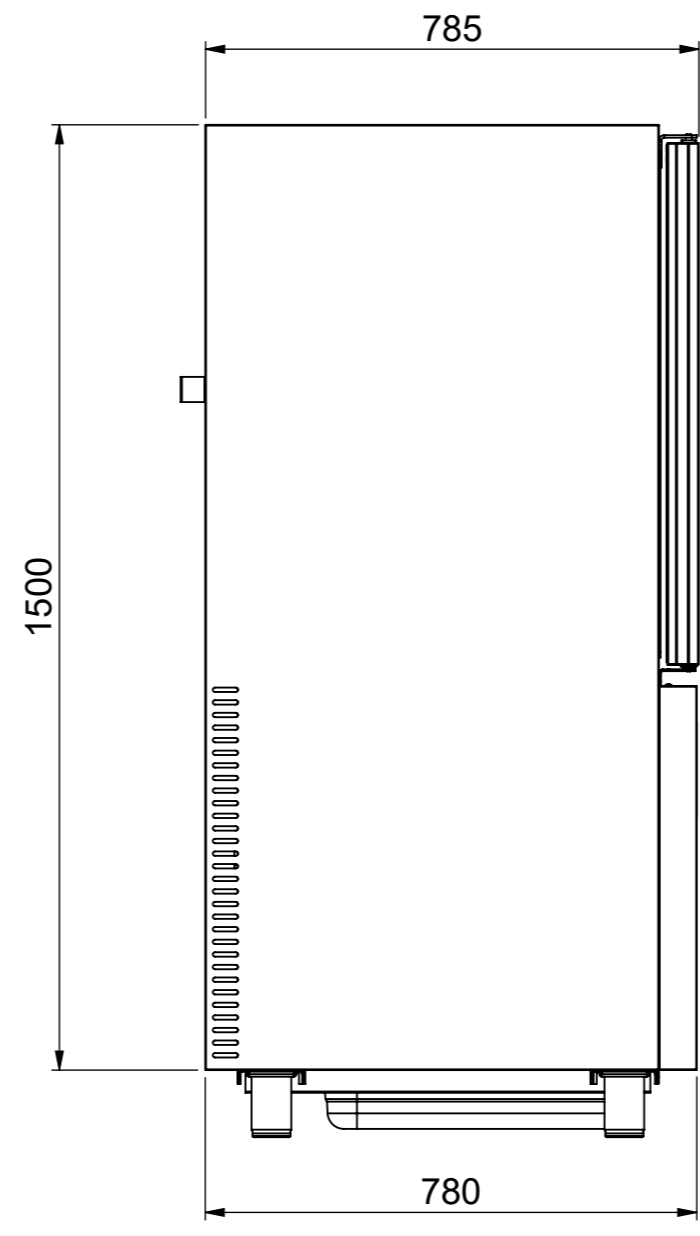
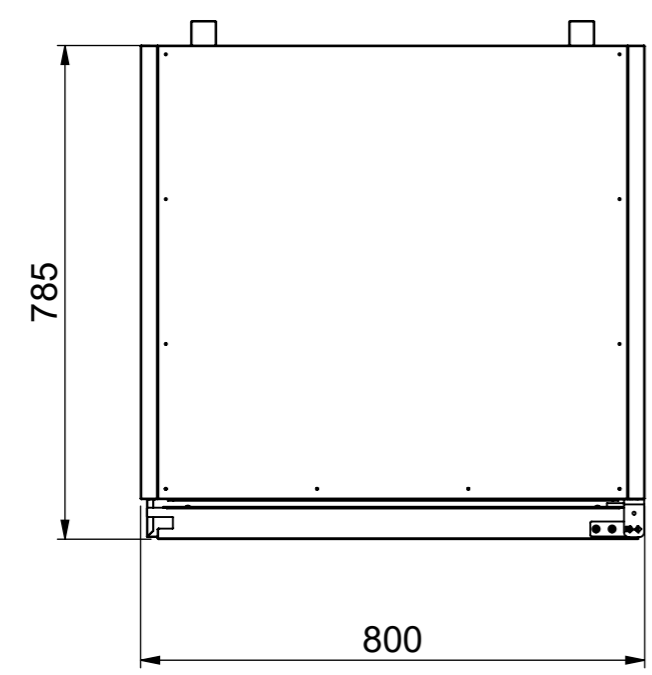
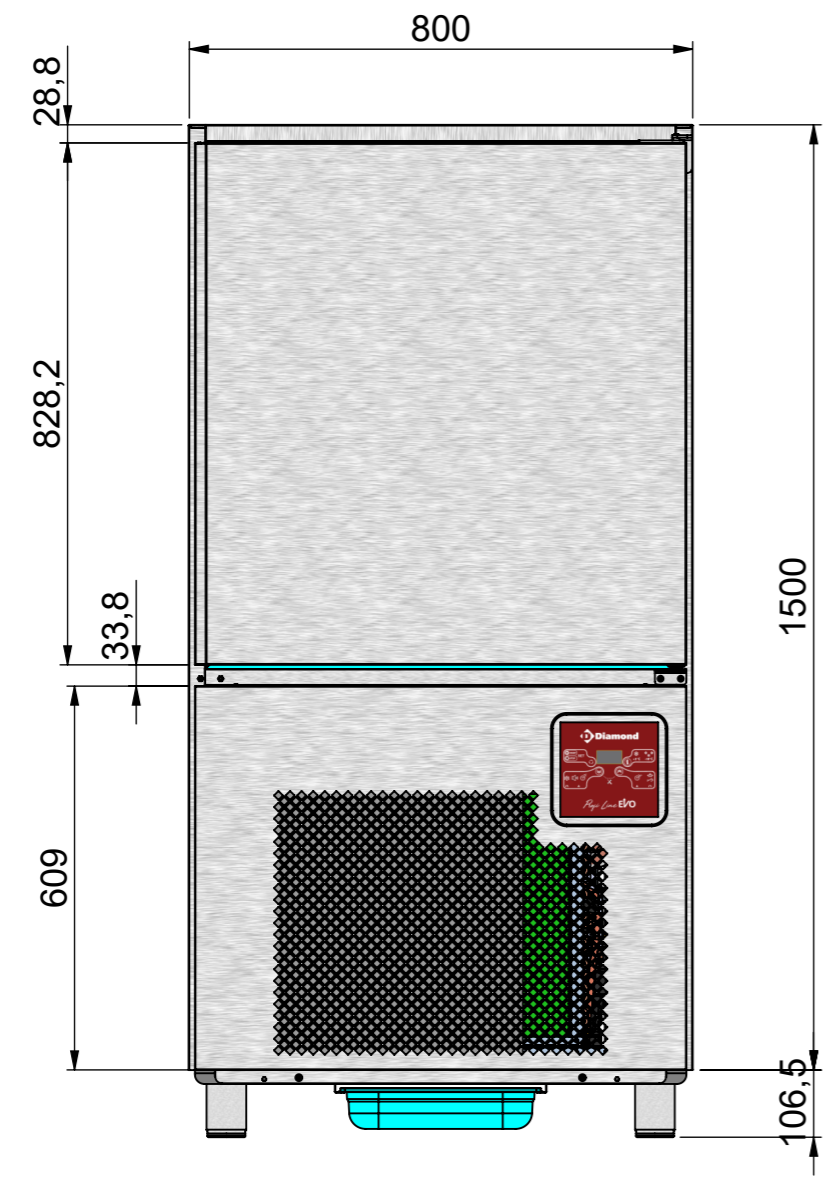
This drawing contains confidential information and is the property of DIAMOND, without whose permission it may not be copied, shown or handed to a third party or otherwise used, and it is to be returned promptly upon request to the DIAMOND, which is responsible for the drawing. SUPPLY SPECIFICATIONS / SPECIFICHE DI FORNITURA  
Remove all punching burrs after machining or press-forming process. draft angle 2°  
fillets not quoted R=2, internal bend radius as thickness. chamfers not quoted: 0.5x45°  
For other specifications please contact the technical department.

	0.4	—	0.2/100
	0.4	//	0.2/100
	0.25	⊥	0.2/100

Angles ± 1°  
Angoli ± 1°

General tolerance - Tolleranza generale: UNI EN 227 68/1 - C	
Length and diam. Lungh. e diametri	>
0.00 6.00 30.0 120 315 1000 2000 4000	0.00 6.00 30.0 120 315 1000 2000 4000
Tolerance Tolleranza	± 0.2 ± 0.5 ± 0.8 ± 1.2 ± 2.0 ± 3.0 ± 4.0 ± 5.0

PIEGHE IN GIU'  
PIEGHE IN SU'



 Chaussée de Vilvorde 92 Brussels - Belgium DENOMINAZIONE/Name <b>BLAST CHILLER 10T TOUCH R290</b>	RIFERIMENTO / Reference <b>GTP-10/3R</b>	FINITURA/Finish DIAMOND EUROPE SA/NV	 PESO/Weight (kg) <b>166.7</b>
		GREZZO/Stock size mm	SCALA/Scale <b>1:50</b> DATA/Date <b>31/10/25</b>
Il presente disegno è proprietà della Diamond Non può essere copiato o mostrato a terzi senza preventiva autorizzazione scritta. La Società tutelerà a termini di legge. This drawing is property of Diamond an may not be reproduced nor disclosed to third parties without the written consent of Diamond Any abuse will be prosecuted.		ORIENTAMENTO 	FIRMA/Sign <b>MG</b>
			REV/Rev

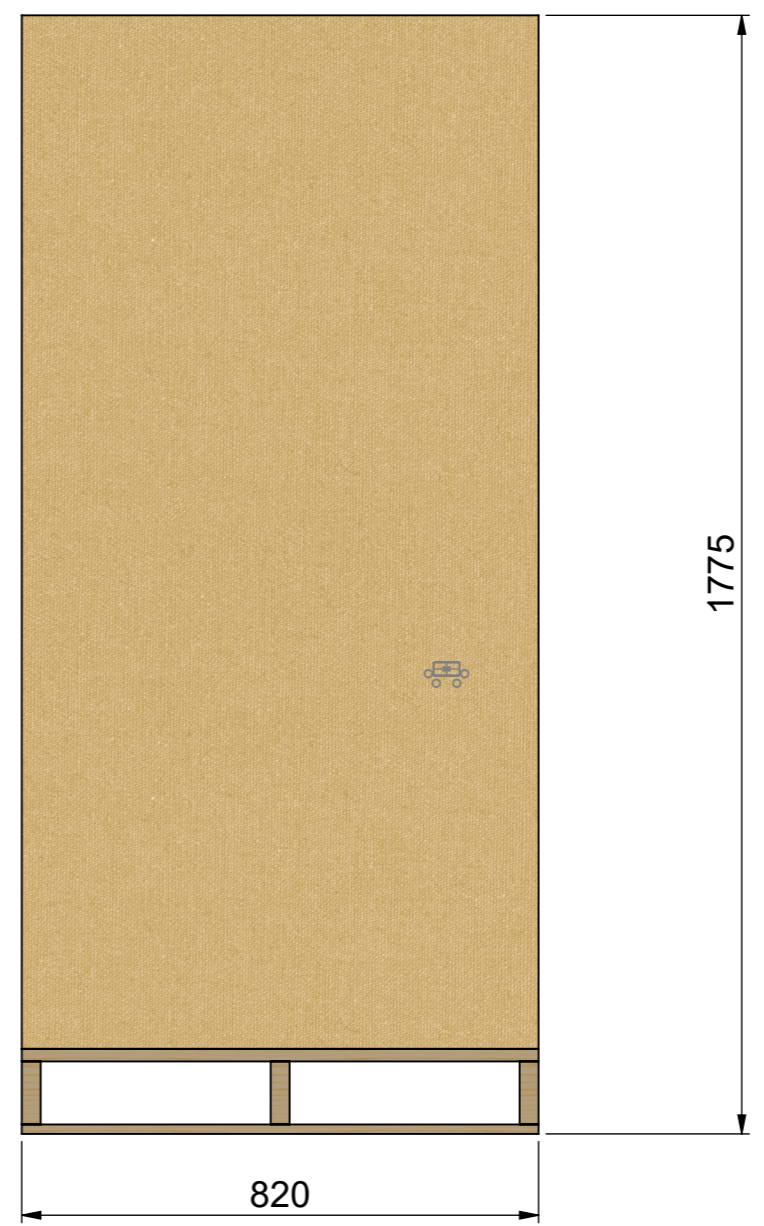
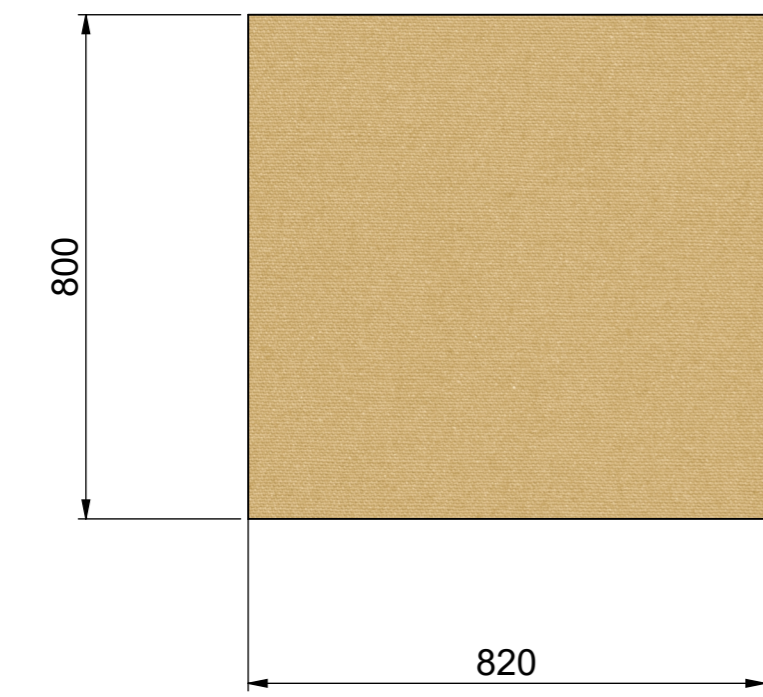
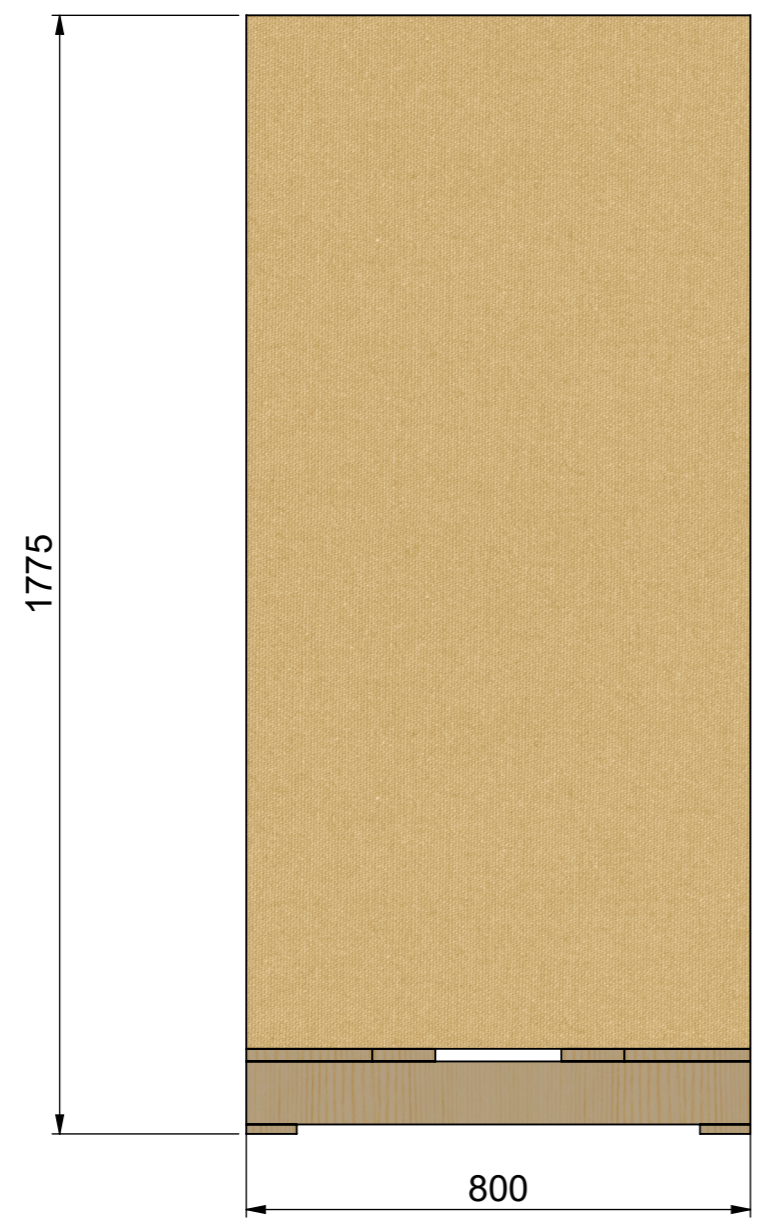
This drawing contains confidential information and is the property of DIAMOND, without whose permission it may not be copied, shown or handed to a third party or otherwise used, and it is to be returned promptly upon request to the DIAMOND, which is responsible for the drawing. SUPPLY SPECIFICATIONS / SPECIFICHE DI FORNITURA. Remove all punching burrs after machining or press-forming process. draft angle 2°. fillets not quoted R=2, internal bend radius as thickness. chamfers not quoted: 0.5x45°. For other specifications please contact the technical department.

	0.4	—	0.2/100
	0.4	//	0.2/100
	0.25	⊥	0.2/100

Angles ± 1°  
Angoli ± 1°

General tolerance - Tolleranza generale: UNI EN 227 68/1 - C	
Length and diam. Lungh. e diametri	> 4000 2000 4000
Tolerance Tolleranza	± 0.2 ± 0.5 ± 0.8 ± 1.2 ± 2.0 ± 3.0 ± 4.0 ± 5.0

PIEGHE IN GIU'  
PIEGHE IN SU'



dimensioni	mm	800x785x1625
larghezza luce porta	mm	780
altezza luce porta	mm	828
profondità interna	mm	470
spessore	mm	60
classe di maticca		4
capacità abbattimento	kg	26
capacità congelamento	kg	16
refrigerante	gas	R290
alimentazione elettrica	V/Hz	230/1/50
potenza elettrica	W	1480
corrente max	A	8,1
allestimento catering		10 GN 1/1
allestimento baking		10 EN
passo teglie	mm	65
peso netto	kg	140
cavo elettrico	mm	3x1,5
tubo scarico acqua	Ø	1/2"
sbrinamento		automatico a sosta
controllo ciclo : atempo		si
controllo ciclo : a spillone		si

<b>Diamond</b> Chaussée de Vilvorde 92 Brussels - Belgium DENOMINAZIONE/Name <b>BLAST CHILLER 10T TOUCH R290</b>	RIFERIMENTO / Reference <b>GTP-10/3R</b>	DIAMOND EUROPE SA/NV	PESO/Weight (kg) <b>166.7</b>
			SCALA/Scale <b>1:50</b>
GREZZO/Stock size <b>mm</b>		ORIENTAMENTO 	FIRMA/Sign <b>MG</b>
			REV/Rev

Il presente disegno è proprietà della Diamond Non può essere copiato o mostrato a terzi senza preventiva autorizzazione scritta. La Società tutelerà a termini di legge. This drawing is property of Diamond and may not be reproduced nor disclosed to third parties without the written consent of Diamond Any abuse will be prosecuted.