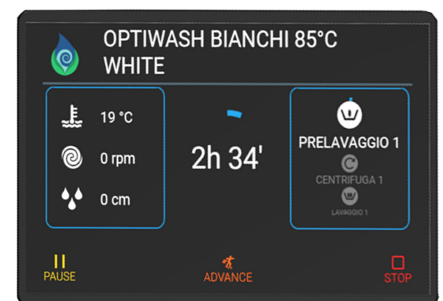
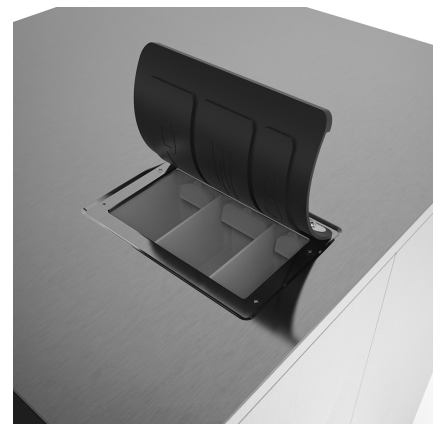
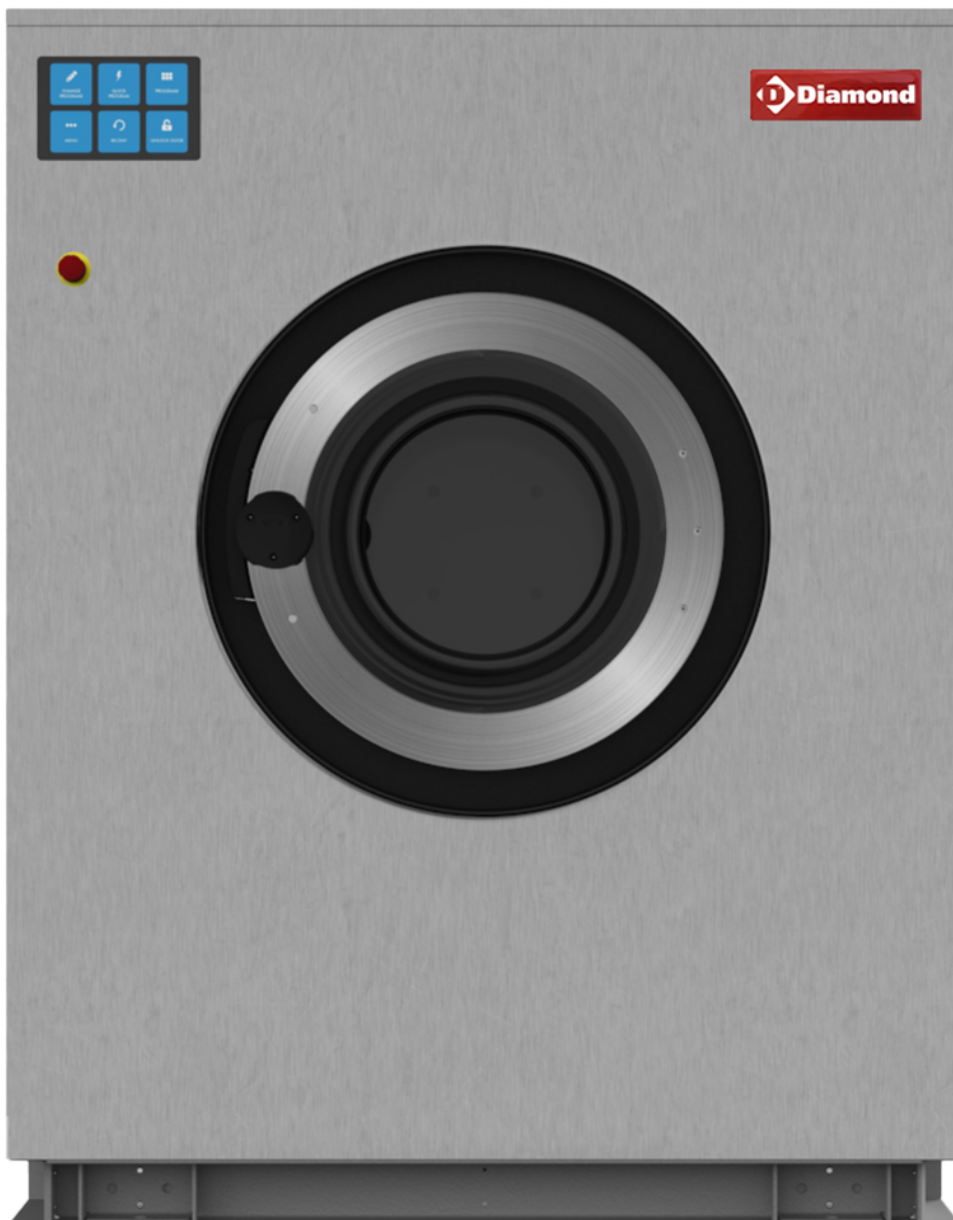


MOD : DRW30-TS/N

Production code : R30DDIELS1AIA02+K0000CONTR_30

SCHEDA TECNICA LAVATRICI / TECHNICAL DATA SHEET

DRW30-TS/N



SCHEDA TECNICA LAVATRICI / TECHNICAL DATA SHEET

MODELLO MODEL	DRW	---	DRW11-TS/N	DRW14-TS/N	DRW18-TS/N	DRW23-TS/N	DRW30-TS/N	---	---	---	---
CARATTERISTICHE GENERALI GENERAL TECHNICAL DATA											
CAPACITA' 1:10 e 1:9 CAPACITY 1:10 and 1:9	Kg (lb)	8,1 / 9 (17,8 / 19,8]	10,6 / 11,7 (23,3 / 25,9]	14 / 15,6 (31 / 34,4]	18,1 / 20,1 (39,9 / 44,3]	21,5 / 23,9 (47,5 / 52,8]	31,8 / 35,3 (70,1 / 77,9]	39,5 / 43,9 (87,1 / 96,8]	55,2 / 61,3 (122 / 135,3]	69,9 / 77,6 (154 / 171,2]	84,8 / 94,2 (187 / 207,7]
DIAMETRO CESTO DRUM DIAMETER	∅ mm ∅ (inches)	535 (21.0)	535 (21.0)	700 (27.5)	700 (27.5)	700 (27.5)	880 (34.6)	880 (34.6)	1080 (42.5)	1200 (47.2)	1200 (47.2)
ENERGY LABEL	-	NA	NA	NA	NA	NA	NA	NA	NA	NA	NA
PROFONDITA' CESTO DRUM DEPTH	mm (inches)	360 (14.1)	470 (18.5)	365 (14.3)	470 (18.5)	560 (22.0)	523 (20.5)	645 (25.4)	603 (23.7)	618 (24.3)	750 (29.5)
DIAMETRO DI CARICO LOAD DIAMETER	∅ mm ∅ (inches)	282 (11.1)	282 (11.1)	380 (14.9)	380 (14.9)	380 (14.9)	400 (15.7)	530 (20.8)	530 (20.8)	530 (20.8)	530 (20.8)
VELOCITA' DI CENTRIFUGA SPIN SPEED	rpm	535	535	568	568	568	452	452	408	360	360
FATTORE G G FACTOR	-	85	85	126	126	126	100	100	100	86	86
INTENSITA' SONORA AEREA AIR SOUND INTENSITY	dB(A)	65	65	65	65	65	65	65	70	70	70
PERDITE AL MANTELLO HEATING LEAK	%	5	5	5	5	5	5	5	5	5	5
SFIATO (pos.5) VENT (pos.5)	∅ mm ∅ (inches)	50 (2)	50 (2)	50 (2)	50 (2)	50 (2)	50 (2)	50 (2)	80 (3)	80 (3)	80 (3)
PESO NETTO NET WEIGHT	Kg (lb)	199 (438.7)	220.8 (486.7)	295.2 (650.8)	304.5 (671.3)	315.6 (695.7)	478.7 (1055.3)	511.7 (1128.1)	967.9 (2133.8)	1052 (2319.2)	1184 (2610.2)
CARICO DINAMICO (FREQUENZA) DYNAMIC LOAD (FREQUENCY)	N (Hz)	2100 (8,9Hz)	2519 (8,9Hz)	4210 (9,5Hz)	3963 (9,5Hz)	3467 (9,5Hz)	6916 (7,5Hz)	6916 (7,5Hz)	9876 (6,8Hz)	8527 (6,0Hz)	8357 (6,0Hz)
MODALITA' DI ANCORAGGIO FIXING MODALITY	---	FISCHER					CONTROTELAIO / CONTERFRAME				

MODELLO MODEL	DRW	---	DRW11-TS/N	DRW14-TS/N	DRW18-TS/N	DRW23-TS/N	DRW30-TS/N	---	---	---	---
DIMENSIONI IMBALLO PACKING DIMENSIONS											
LARGHEZZA WIDTH	mm (inches)	760 (29.9)	760 (29.9)	920 (36.2)	920 (36.2)	920 (36.2)	1150 (45.2)	1300 (51.1)	1540 (60.6)	1700 (66.9)	1750 (66.9)
PROFONDITA' DEPTH	mm (inches)	940 (37.0)	1045 (41.1)	1150 (45.2)	1150 (45.2)	1150 (45.2)	1110 (43.7)	1300 (51.1)	1500 (59.0) **	1540 (60.6) **	1700 (64.9) **
ALTEZZA HEIGHT	mm (inches)	1210 (47.6)	1210 (47.6)	1430 (56.3)	1430 (56.3)	1430 (56.3)	1720 (67.7) **	1720 (69.3) **	2020 (79.5)	2020 (79.5)	2020 (79.5)
VOLUME VOLUME	m ³ (ft ³)	0,86 (30.4)	0,96 (33.9)	1,5 (52.9)	1,5 (52.9)	1,5 (52.9)	2,15 (75.9)	2,97 (105)	4,6 (162)	5,3 (187)	5,7 (201)
PESO LORDO GROSS WEIGHT	Kg (lb)	206 (454.2)	231.5 (510.3)	310.4 (684.3)	319.7 (704.8)	330.9 (729.5)	531.3 (1171.3)	566.2 (1248.6)	1051 (2317)	1150 (2535.3)	1276 (2813.1)
PESO LORDO GABBIA IN LEGNO GROSS WEIGHT WOODEN CAGE	Kg (lb)	238 (524.7)	244 (537.9)	353 (778.2)	366 (806.9)	373 (822.3)					
PESO LORDO CASSA IN LEGNO GROSS WEIGHT WOODEN CASE	Kg (lb)			373 (822.3)	386 (850.9)	393 (866.4)		680 (1499.1)			

MODELLO MODEL	DRW	---	DRW11-TS/N	DRW14-TS/N	DRW18-TS/N	DRW23-TS/N	DRW30-TS/N	---	---	---	---
PIANO DI CARICO CONTAINER – CONTAINER LOADING PLAN											
CONTAINER 20"	Pz.	18	32	12	12	12	10	4	3	3	3
CONTAINER 40"	Pz.	37	68	26	26	26	20	9	8	7	7

** Le dimensioni di imballo comprendono anche il controtelaio (ove presente), imballato sopra o dietro la macchina / The packaging dimensions include the counterframe (if present), packed on top or on the back of the machine.

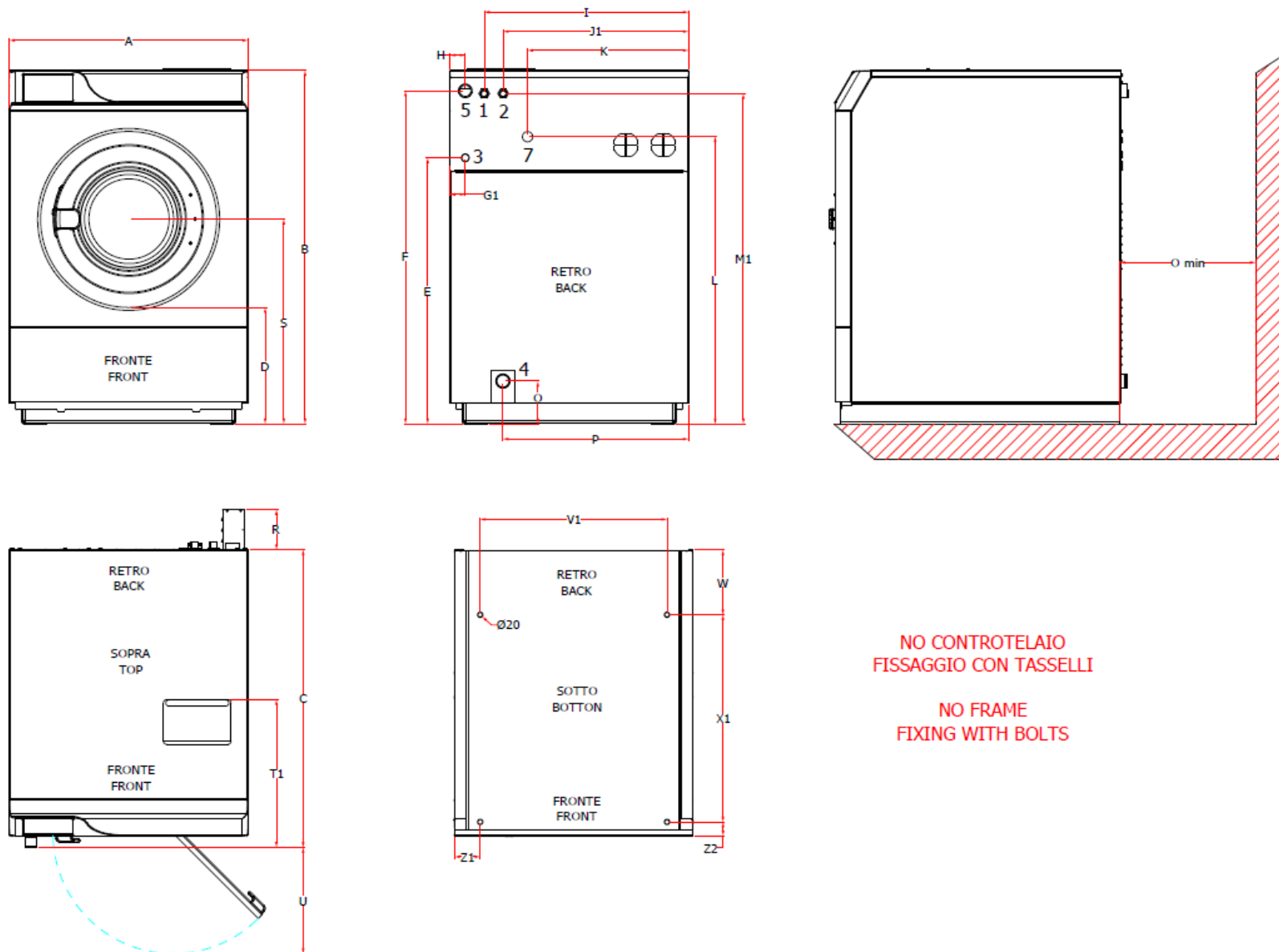
* Il controtelaio è un accessorio ordinabile a parte / The counterframe is an accessory that can be ordered separately

MODELLO MODEL	DRW	---	DRW11-TS/N	DRW14-TS/N	DRW18-TS/N	DRW23-TS/N	DRW30-TS/N	---	---	---	---
RISCALDAMENTO HEATING											
RISCALDAMENTO ELETTRICO ELECTRICAL HEATING	kW	6	9	9	12	15	24	24	30	30	30
VAPORE (pos. 3)/CONSUMO* STEAM HEATING (pos. 3)/CONSUMPTION*	∅	¾"	¾"	¾"	¾"	¾"	¾"	¾"	¾"	¾"	¾"
	bar	min 0,3 max 9	min 0,3 max 9	min 0,3 max 9	min 0,3 max 9	min 0,3 max 9	min 0,3 max 9	min 0,3 max 9	min 0,3 max 9	min 0,3 max 9	min 0,3 max 9
	Kg (lb)	0,2 (0.4)	0,2 (0.4)	0,3 (0.6)	0,4 (0.8)	0,6 (1.3)	0,8 (1.7)	1 (2.2)	1,4 (3)	1,8 (3.9)	2,2 (4.8)
ACQUA WATER											
CONNESSIONE ACQUA FREDDA (pos.1) COLD WATER INLET (pos.1)	∅	¾"	¾"	¾"	¾"	¾"	¾"	¾"	1 ½"	1 ½"	1 ½"
CONNESSIONE ACQUA CALDA (pos.2) HOT WATER INLET (pos.2)	∅	¾"	¾"	¾"	¾"	¾"	¾"	¾"	1 ½"	1 ½"	1 ½"
CONNESSIONI ACQUE WATER SUPPLY	bar	0,5÷10	0,5÷10	0,5÷10	0,5÷10	0,5÷10	0,5÷10	0,5÷10	0,5÷10	0,5÷10	0,5÷10
CONSUMO ACQUA FREDDA* COLD WATER CONSUMPTION*	l (ft ³)	50 (1.76)	68 (2.4)	92 (3.25)	119 (4.2)	152 (5.3)	225 (7.9)	440 (15.5)	605 (21.4)	770 (27.2)	935 (33)
CONSUMO ACQUA CALDA* HOT WATER CONSUMPTION*	l (ft ³)	14 (0.5)	20 (0.7)	27 (0.9)	34 (1.2)	44 (1.5)	60 (2.1)	80 (2.8)	110 (3.9)	140 (4.9)	170 (6)
CONSUMO ACQUA* WATER CONSUMPTION*	l (ft ³)	64 (2.3)	88 (3.1)	119 (4.2)	153 (5.4)	196 (6.9)	285 (10)	520 (18.4)	715 (25.2)	910 (32.1)	1105 (39)
SCARICO (pos.4) DRAIN (pos.4)	∅ mm ∅ (inches)	50 (2)	50 (2)	50 (2)	50 (2)	50 (2)	80 (3)	80 (3)	80 (3)	80 (3)	80 (3)
PORTATA SCARICO DRAIN FLOW	lt/min (ft ³ /min)	160 (5.6)	160 (5.6)	160 (5.6)	160 (5.6)	160 (5.6)	200 (7)	200 (7)	200 (7)	200 (7)	200 (7)

MODELLO MODEL	DRW	---	DRW11-TS/N	DRW14-TS/N	DRW18-TS/N	DRW23-TS/N	DRW30-TS/N	---	---	---	---
ASSORBIMENTI ELETTRICI 50/60Hz (pos. 7) ELECTRICAL ABSORPTIONS 50/60Hz (pos. 7)											
RISCALDAMENTO ELETTRICO ELECTRICAL HEATING	kW	7,5	10,5	11	14	17	27	29	35	38	40
3ph400V-480V(+N)/3ph230V/1ph230V	A	11/18/29	16/25/42	17/26/43	22/38/66	27/47/80	46/79/-	49/85/-	56/96/-	61/106/-	65/113/-
CONSUMO*/CONSUMPTION*	kWh	1,5	1,5	1,5	1,5	1,6	4	4	5	9	9
RISCALDAMENTO VAPORE, HOT WATER STEAM, HOT WATER HEATING	kW	1,5	1,5	1,5	1,5	1,5	4	4	5	9	9
3ph400V÷480V(+N)/3ph230V/1ph230V	A	-/-/3	-/-/3	-/-/4	-/-/4	-/-/4	11/19/-	12/20/-	14/24/-	18/31/-	22/37/-
CONSUMO*/CONSUMPTION*	kWh	0,7	0,8	0,8	0,8	0,9	2,5	2,7	3,5	6,5	6,7

* Lavaggio "COTONE" 60°C, EN60456, tab. A2: lavaggio 60°C (15') e 4 risciacqui a freddo (3'+3'+2'+2'), ritmo motore 12"/3"/12"; centrifughe intermedie e 5' di centrifuga finale: cotone 180gr/m². Acqua fredda a 15°C; acqua calda servita a 60°C / * Cycle "COTTON" 60°C, EN60456, tab. A2: wash 60°C (15') and 4 cold rinses (3'+3'+2'+2'), motor rhythm 12"/3"/12"; middle spins and 5' final spin: cotton 180gr/m². Cold water 15°C, hot water supply 60°C.

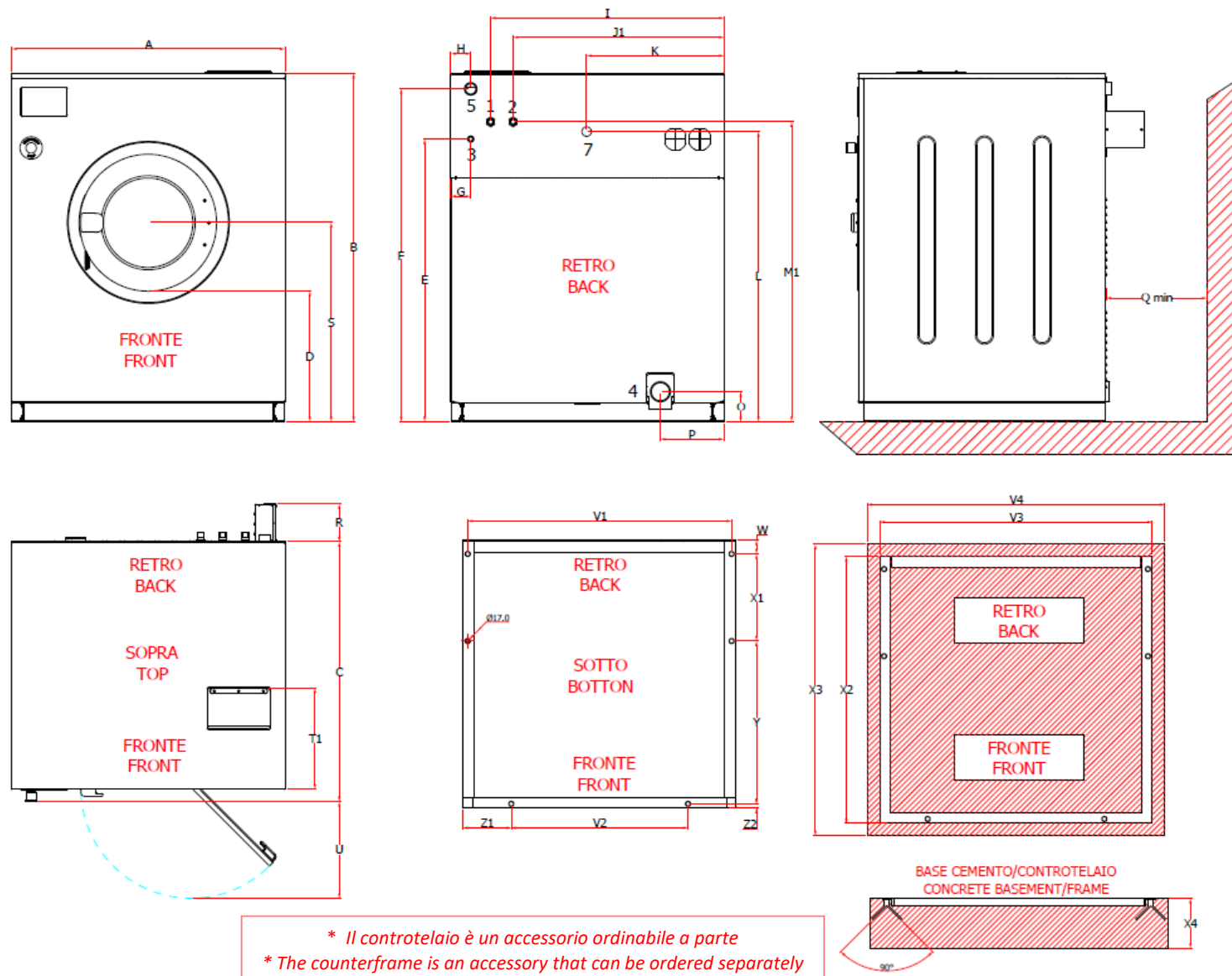
DRW11-TS / DRW14-TS / DRW18-TS / DR23-TS



**NO CONTROTELAIO
FISSAGGIO CON TASSELLI**

**NO FRAME
FIXING WITH BOLTS**

DRW30-TS/N



** Il controtelaio è un accessorio ordinabile a parte*
** The counterframe is an accessory that can be ordered separately*

mm (inches)	---	DRW11-TS/N	DRW14-TS/N	DRW18-TS/N	DRW23-TS/N	DRW30-TS/N	---	---	---	---
A (larghezza/width)	720 (28.3)	720 (28.3)	880 (34.6)	880 (34.6)	880 (34.6)	1098 (43.2)	1098 (43.2)	1430 (56.2)	1560 (61.4)	1560 (61.4)
B (altezza/high)	1087 (42.7)	1087 (42.7)	1312 (51.6)	1312 (51.6)	1312 (51.6)	1433 (56.4)	1433 (56.4)	1870 (73.6)	1870 (73.6)	1870 (73.6)
C (prof./ depth)	821 (32.3)	933 (36.7)	954 (37.5)	1010 (39.7)	1100 (43.3)	946 (37.2)	1115 (43.9)	1344 (52.9)	1395 (54.9)	1525 (60)
D	334 (13.1)	334 (13.1)	480 (18.8)	480 (18.8)	480 (18.8)	529 (20.8)	510 (20)	788 (31)	830 (32.6)	830 (32.6)
E	765 (30.1)	765 (30.1)	982 (38.6)	982 (38.6)	982 (38.6)	1140 (46)	1140 (46)	1020 (40.1)	1020 (40.1)	1020 (40.1)
F	1014 (39.9)	1014 (39.9)	1230 (48.4)	1230 (48.4)	1230 (48.4)	1338 (53.8)	1338 (53.8)	-	-	-
G	52 (2)	52 (2)	56 (2.2)	56 (2.2)	56 (2.2)	80 (3)	80 (3)	-	-	-
H	62 (3.1)	62 (3.1)	56 (2.2)	56 (2.2)	56 (2.2)	80 (3)	80 (3)	-	-	-
I	555 (21.8)	555 (21.8)	754 (29.6)	754 (29.6)	754 (29.6)	938 (36.9)	938 (36.9)	-	-	-
J1	315 (12.4)	315 (12.4)	684 (26.9)	684 (26.9)	684 (26.9)	848 (33.3)	848 (33.3)	-	-	-
J2	-	-	-	-	-	-	-	150 (5.9)	150 (5.9)	150 (5.9)
K	495 (19.4)	495 (19.4)	594 (23.3)	594 (23.3)	594 (23.3)	552 (21.7)	552 (21.7)	57 (2.2)	57 (2.2)	57 (2.2)
L	762 (30.1)	762 (30.1)	1060 (41.7)	1060 (41.7)	1060 (41.7)	1165 (45.8)	1165 (45.8)	1148 (45.1)	1148 (45.1)	1148 (45.1)
M1	1033 (40.6)	1033 (40.6)	1220 (48)	1220 (48)	1220 (48)	1204 (47.4)	1204 (47.4)	-	-	-
M2	-	-	-	-	-	-	-	1465 (57.6)	1465 (57.6)	1465 (57.6)
M3	-	-	-	-	-	-	-	1345 (52.9)	1345 (52.9)	1345 (52.9)
O	76 (2.9)	76 (2.9)	160 (6.2)	160 (6.2)	160 (6.2)	120 (4.7)	120 (4.7)	200 (7.8)	200 (7.8)	200 (7.8)
P	560 (22)	560 (22)	685 (26.9)	685 (26.9)	685 (26.9)	255 (10)	255 (10)	425 (16.7)	490 (19.2)	490 (19.2)

mm (inches)	---	DRW11-TS/N	DRW14-TS/N	DRW18-TS/N	DRW23-TS/N	DRW30-TS/N	---	---	---	---
Q	600 (23.6)	600 (23.6)	600 (23.6)	600 (23.6)	600 (23.6)	600 (23.6)	600 (23.6)	600 (23.6)	600 (23.6)	600 (23.6)
R	150 (5.9)	150 (5.9)	150 (5.9)	150 (5.9)	150 (5.9)	150 (5.9)	150 (5.9)	150 (5.9)	150 (5.9)	150 (5.9)
S	555 (21.8)	555 (21.8)	756 (29.7)	756 (29.7)	756 (29.7)	800 (31.4)	800 (31.4)	1084 (42.6)	1118 (44)	1118 (44)
T1	490 (19.3)	490 (19.3)	545 (21.4)	545 (21.4)	545 (21.4)	361 (14.2)	361 (14.2)	-	-	-
T2	-	-	-	-	-	-	-	230 (9)	230 (9)	230 (9)
T3	-	-	-	-	-	-	-	1560 (61.4)	1560 (61.4)	1560 (61.4)
T4	-	-	-	-	-	-	-	155 (6.1)	155 (6.1)	155 (6.1)
T5	-	-	-	-	-	-	-	630 (24.8)	630 (24.8)	630 (24.8)
T6	-	-	-	-	-	-	-	200 (7.8)	513 (20.1)	579 (22.7)
T7	-	-	-	-	-	-	-	421 (16.5)	310 (12.2)	310 (12.2)
U	421 (16.5)	421 (16.5)	465 (18.3)	465 (18.3)	465 (18.3)	465 (18.3)	590 (23.2)	623 (24.5)	623 (24.5)	623 (24.5)
V1	610 (24)	610 (24)	690 (27.1)	690 (27.1)	690 (27.1)	1060 (41.7)	1060 (41.7)	1380 (54.3)	1520 (59.8)	1520 (59.8)
V2	-	-	-	-	-	800 (31.4)	710 (27.9)	1080 (42.5)	1200 (47.2)	1200 (47.2)
V3	-	-	-	-	-	1110 (43.7)	1100 (43.3)	1430 (56.2)	1560 (61.4)	1560 (61.4)
V4	-	-	-	-	-	1310 (51.5)	1300 (51.1)	1630 (64.1)	1760 (69.2)	1760 (69.2)
W	204 (8)	204 (8)	240 (9.4)	240 (9.4)	240 (9.4)	205 (8)	50 (1.97)	260 (10.2)	260 (10.2)	260 (10.2)
X1	542 (21.3)	647 (25.4)	570 (22.4)	675 (26.5)	765 (30.1)	517 (20.3)	350 (13.7)	765 (30.1)	765 (30.1)	897 (35.3)
X2	-	-	-	-	-	972 (38.2)	1075 (42.3)	1300 (51.1)	1350 (53.1)	1482 (58.3)

mm (inches)	---	DRW11-TS/N	DRW14-TS/N	DRW18-TS/N	DRW23-TS/N	DRW30-TS/N	---	---	---	---
X3	-	-	-	-	-	1172 (46.1)	1275 (50.1)	1500 (59)	1550 (61)	1582 (62.2)
X4	-	-	-	-	-	200 (7.8)	200 (7.8)	200 (7.8)	200 (7.8)	200 (7.8)
Y	-	-	-	-	-	233 (9.1)	654 (25.7)	255 (10)	305 (12)	305 (12)
Z1	55 (2.1)	55 (2.1)	95 (3.7)	95 (3.7)	95 (3.7)	148 (5.3)	194 (7.6)	175 (6.8)	180 (7)	180 (7)
Z2	75 (2.9)	75 (2.9)	51 (2)	51 (2)	51 (2)	18 (0.7)	18 (0.7)	20 (0.78)	20 (0.78)	20 (0.78)
pos. 1	ACQUA FREDDA / COLD WATER									
pos. 2	ACQUA CALDA / HOT WATER									
pos. 3	VAPORE DIRETTO / DIRECT STEAM (solo macchine vapore / only steam heated machines)									
Pos. 4	SCARICO ACQUA / DRAIN VALVE									
Pos. 5	SFIATO / VENT									
Pos. 7	ALIMENTAZIONE ELETTRICA / ELECTRICAL POWER SUPPLY									
Pos. 9	CARICO DETERSIVI / DETERGENT LOAD									