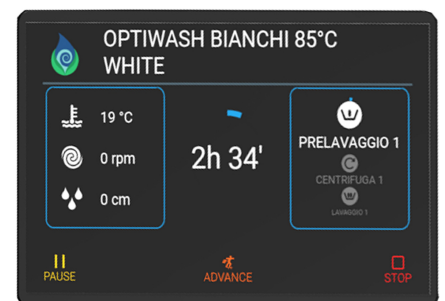
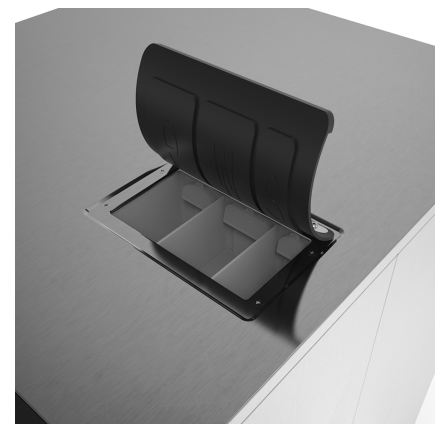
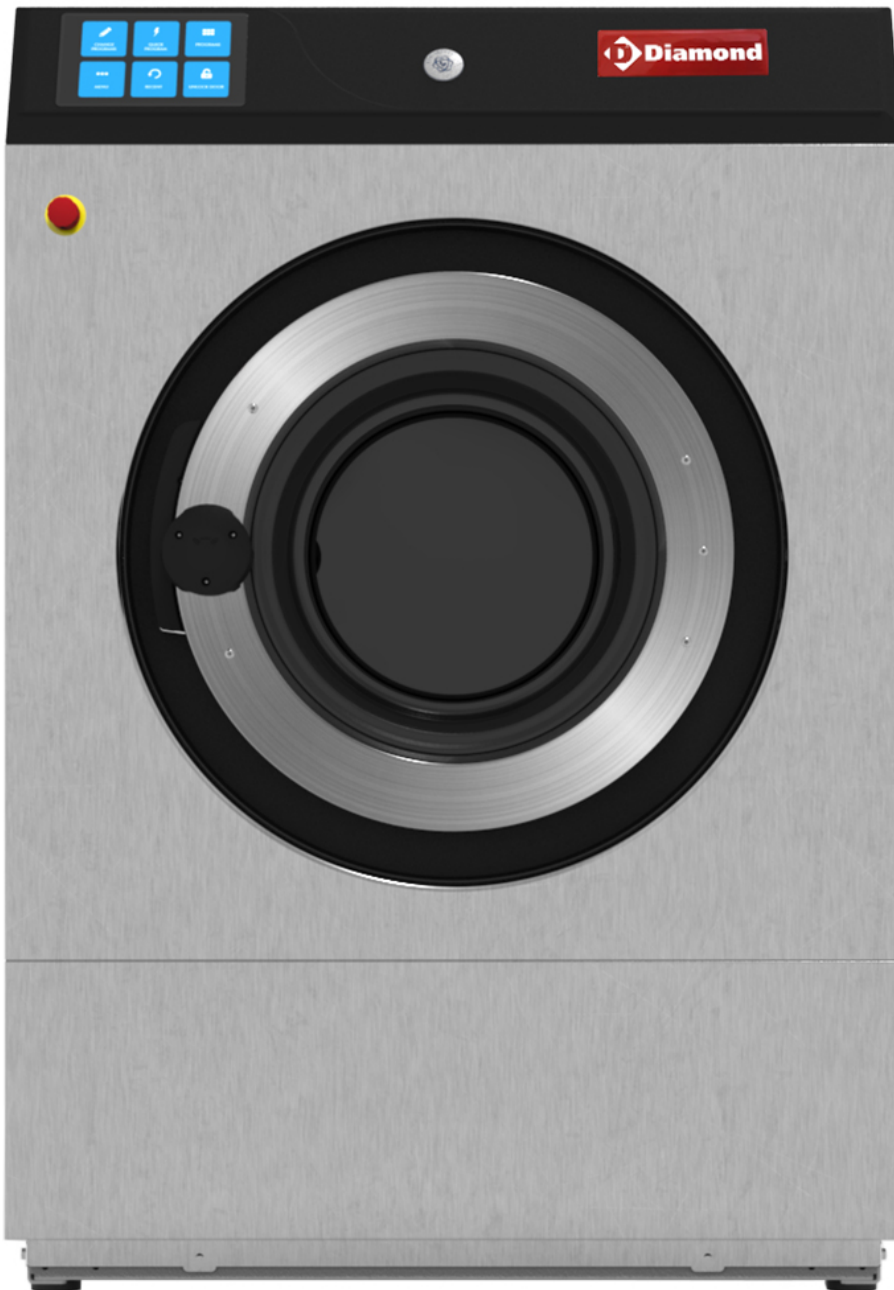


MOD : DRW14-TS/N

Production code : R14DDIELS1AIA02+K0000TAFHRC_01

SCHEDA TECNICA LAVATRICI / TECHNICAL DATA SHEET

DRW14-TS/N



SCHEDA TECNICA LAVATRICI / TECHNICAL DATA SHEET

MODELLO MODEL		DRW14-TS/N	DRW18-TS/N	DRW23-TS/N
CARATTERISTICHE GENERALI GENERAL TECHNICAL DATA				
CAPACITA' CAPACITY	Kg (lb)	14 (30.8)	18 (39.6)	23 (50.6)
DIAMETRO CESTO DRUM DIAMETER	Ø (mm) Ø (inches)	700 (27.5)	700 (27.5)	700 (27.5)
PROFONDITA' CESTO DRUM DEPTH	(mm) (inches)	365 (14.4)	470 (18.5)	560 (22)
DIAMETRO DI CARICO LOAD DIAMETER	Ø (mm) Ø (inches)	380 (15)	380 (15)	380 (15)
VELOCITA' DI CENTRIFUGA SPIN SPEED	rpm	568	568	568
FATTORE G G FACTOR	-	126	126	126
INTENSITA' SONORA AEREA AIR SOUND INTENSITY	dB(A)	65	65	65
PERDITE AL MANTELLO HEATING LEAK	%	5	5	5
SFIATO (pos.5) VENT (pos.5)	Ø (mm) Ø (inches)	50 (2)	50 (2)	50 (2)
PESO NETTO NET WEIGHT	(Kg) (lb)	295.2 (650.8)	304.5 (671.3)	315.6 (695.7)
CARICO DINAMICO (FREQUENZA) DYNAMIC LOAD (FREQUENCY)	N (Hz)	4210 (9,5Hz)	3963 (9,5Hz)	3467 (9,5Hz)
MODALITA' DI ANCORAGGIO FIXING MODALITY	---	FISCHER		

MODELLO MODEL		DRW14-TS/N	DRW18-TS/N	DRW23-TS/N
DIMENSIONI IMBALLO PACKING DIMENSIONS				
LARGHEZZA WIDTH	(mm) (inches)	920 (36.2)	920 (36.2)	920 (36.2)
PROFONDITA' DEPTH	(mm) (inches)	1150 (45.3)	1150 (45.3)	1150 (45.3)
ALTEZZA HEIGHT	(mm) (inches)	1400 (55.1)	1400 (55.1)	1400 (55.1)
VOLUME VOLUME	m ³ (ft ³)	1.5 (52.9)	1.5 (52.9)	1.5 (52.9)
PESO LORDO GROSS WEIGHT	(Kg) (lb)	310.4 (684.3)	319.7 (704.8)	330.9 (729.5)
PESO LORDO GABBIA IN LEGNO GROSS WEIGHT WOODEN CAGE	(Kg) (lb)	353 (778.2)	366 (806.9)	373 (822.3)
PESO LORDO CASSA IN LEGNO GROSS WEIGHT WOODEN CASE	(Kg) (lb)	373 (822.3)	386 (850.9)	393 (866.4)

MODELLO MODEL		DRW14-TS/N	DRW18-TS/N	DRW23-TS/N
PIANO DI CARICO CONTAINER – CONTAINER LOADING PLANE				
CONTAINER 20"	Pz.	12	12	12
CONTAINER 40"	Pz.	26	26	26

MODELLO MODEL		DRW14-TS/N	DRW18-TS/N	DRW23-TS/N
RISCALDAMENTO HEATING				
RISCALDAMENTO ELETTRICO ELECTRICAL HEATING	kW	9	12	15
VAPORE (pos. 3)/CONSUMO* STEAM HEATING (pos. 3)/CONSUMPTION*	Ø	¾"	¾"	¾"
	bar	min 0,3 max 9	min 0,3 max 9	min 0,3 max 9
	(Kg) (lb)	0,3 (0.6)	0,4 (0.9)	0,6 (1.3)
ACQUA WATER				
CONNESSIONE ACQUA FREDDA (pos.1) COLD WATER INLET (pos.1)	Ø	¾"	¾"	¾"
CONNESSIONE ACQUA CALDA (pos.2) HOT WATER INLET (pos.2)	Ø	¾"	¾"	¾"
CONNESSIONI ACQUE WATER SUPPLY	bar	0,5÷10	0,5÷10	0,5÷10
CONSUMO ACQUA FREDDA* COLD WATER CONSUMPTION*	(l) (ft ³)	92 (3.2)	119 (4.2)	152 (5.3)
CONSUMO ACQUA CALDA* HOT WATER CONSUMPTION*	(l) (ft ³)	27 (0.9)	34 (1.2)	44 (1.5)
CONSUMO ACQUA* WATER CONSUMPTION*	(l) (ft ³)	119 (4.2)	153 (5.4)	196 (6.9)
SCARICO (pos.4) DRAIN (pos.4)	Ø (mm) Ø (inches)	50 (2)	50 (2)	50 (2)
PORTATA SCARICO DRAIN FLOW	lt/min (ft ³ /min)	160 (5.6)	160 (5.6)	160 (5.6)

MODELLO MODEL		DRW14-TS/N	DRW18-TS/N	DRW23-TS/N
ASSORBIMENTI ELETTRICI 50/60Hz (pos.7) ELECTRICAL ABSORPTIONS 50/60Hz (pos.7)				
RISCALDAMENTO ELETTRICO ELECTRICAL HEATING 3ph400V-480V(+N)/3ph230V/1ph230V CONSUMO*/CONSUMPTION*	kW	11	14	17
	A	17/26/43	22/38/66	27/47/80
	kWh	1,5	1,5	1,6
RISCALDAMENTO VAPORE, HOT WATER STEAM, HOT WATER HEATING 3ph400V÷480V(+N)/3ph230V/1ph230V CONSUMO*/CONSUMPTION*	kW	1,5	1,5	1,5
	A	-/-/4	-/-/4	-/-/4
	kWh	0,8	0,8	0,9

* Lavaggio "COTONE" 60°C, EN60456, tab. A2: lavaggio 60°C (15') e 4 risciacqui a freddo (3'+3'+2'+2'), ritmo motore 12"/3"/12"; centrifughe intermedie e 5' di centrifuga finale: cotone 180gr/m². Acqua fredda a 15°C; acqua calda servita a 60°C / * Cycle "COTTON" 60°C, EN60456, tab. A2: wash 60°C (15') and 4 cold rinses (3'+3'+2'+2'), motor rhythm 12"/3"/12"; middle spins and 5' final spin: cotton 180gr/m². Cold water 15°C, hot water supply 60°C.

mm (inches)	DRW14-TS/N	DRW18-TS/N	DRW23-TS/N
A (larghezza/width)	880 (34.6)	880 (34.6)	880 (34.6)
B (altezza/high)	1312 (51.6)	1312 (51.6)	1312 (51.6)
C (prof./ depth)	954 (37.5)	1010 (39.7)	1100 (43.3)
D	480 (18.8)	480 (18.8)	480 (18.8)
E	982 (38.6)	982 (38.6)	982 (38.6)
F	1230 (48.4)	1230 (48.4)	1230 (48.4)
G	56 (2.2)	56 (2.2)	56 (2.2)
H	56 (2.2)	56 (2.2)	56 (2.2)
I	754 (29.6)	754 (29.6)	754 (29.6)
J1	684 (26.9)	684 (26.9)	684 (26.9)
K	594 (23.3)	594 (23.3)	594 (23.3)
L	1060 (41.7)	1060 (41.7)	1060 (41.7)
M1	1220 (48)	1220 (48)	1220 (48)
O	160 (6.2)	160 (6.2)	160 (6.2)
P	685 (26.9)	685 (26.9)	685 (26.9)
Q	600 (23.6)	600 (23.6)	600 (23.6)

mm (inches)	DRW14-TS/N	DRW18-TS/N	DRW23-TS/N
R	150 (5.9)	150 (5.9)	150 (5.9)
S	756 (29.7)	756 (29.7)	756 (29.7)
T1	545 (21.4)	545 (21.4)	545 (21.4)
U	465 (18.3)	465 (18.3)	465 (18.3)
V1	690 (27.1)	690 (27.1)	690 (27.1)
W	240 (9.4)	240 (9.4)	240 (9.4)
X1	570 (22.4)	675 (26.5)	765 (30.1)
Z1	95 (3.7)	95 (3.7)	95 (3.7)
Z2	51 (2)	51 (2)	51 (2)
pos. 1	ACQUA FREDDA / COLD WATER		
pos. 2	ACQUA CALDA / HOT WATER		
pos. 3	VAPORE DIRETTO / DIRECT STEAM (solo macchine vapore / only steam heated machines)		
pos. 4	SCARICO ACQUA / DRAIN VALVE		
pos. 5	SFIATO / VENT		
pos. 7	ALIMENTAZIONE ELETTRICA / ELECTRICAL POWER SUPPLY		
pos. 9	CARICO DETERSIVI / DETERGENT LOAD		