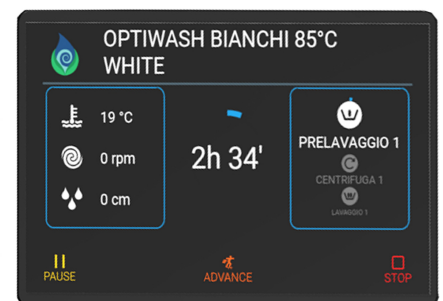
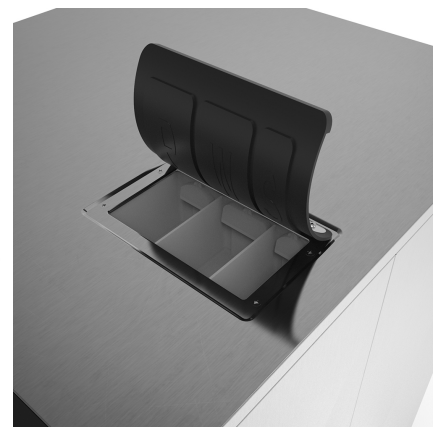
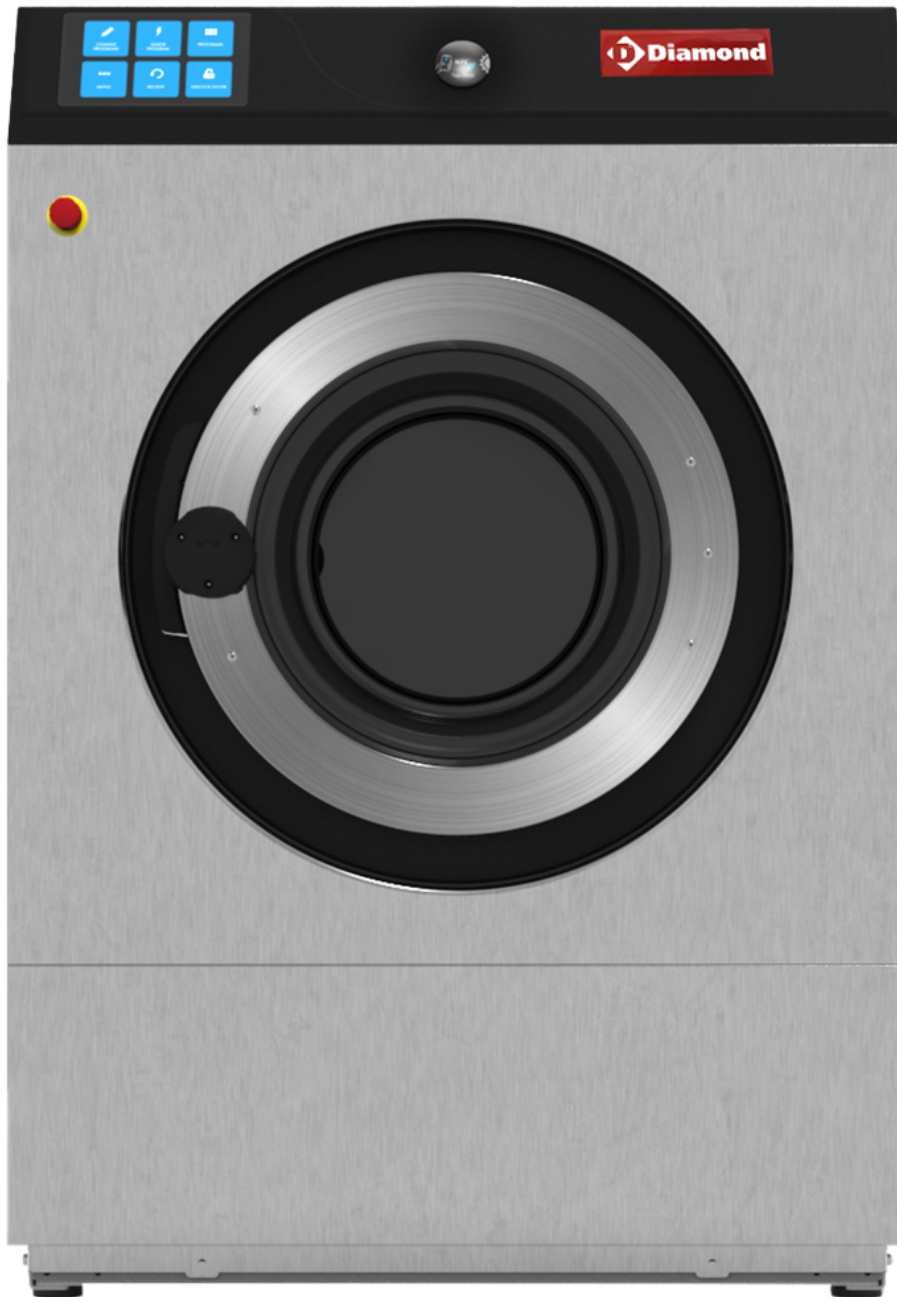


**MOD : DLW18-TS/N**

**Production code : S18DDIELS1AIA02**

*SCHEDA TECNICA LAVATRICI / TECHNICAL DATA SHEET*

## DLW18-TS/N



**SCHEDA TECNICA LAVATRICI / TECHNICAL DATA SHEET**

MODELLO MODEL		DLW14-TS/N	DLW18-TS/N	DLW23-TS/N
<b>CARATTERISTICHE GENERALI GENERAL TECHNICAL DATA</b>				
CAPACITA' CAPACITY	Kg (lb)	14 (30.8)	18 (39.6)	23 (50.6)
DIAMETRO CESTO DRUM DIAMETER	Ø (mm) Ø (inches)	700 (27.5)	700 (27.5)	700 (27.5)
PROFONDITA' CESTO DRUM DEPTH	(mm) (inches)	365 (14.4)	470 (18.5)	560 (22)
DIAMETRO DI CARICO LOAD DIAMETER	Ø (mm) Ø (inches)	380 (15)	380 (15)	380 (15)
VELOCITA' DI CENTRIFUGA SPIN SPEED	rpm	915	915	915
FATTORE G G FACTOR	-	327	327	327
INTENSITA' SONORA AEREA AIR SOUND INTENSITY	dB(A)	70	70	70
PERDITE AL MANTELLO HEATING LEAK	%	5	5	5
SFIATO (pos.5) VENT (pos.5)	Ø (mm) Ø (inches)	50 (2)	50 (2)	50 (2)
PESO NETTO NET WEIGHT	(Kg) (lb)	416 (917)	432 (952.4)	451.8 (996)
CARICO DINAMICO (FREQUENZA) DYNAMIC LOAD (FREQUENCY)	N (Hz)	12854 (15)	11247 (15)	9640 (15)
MODALITA' DI ANCORAGGIO FIXING MODALITY	---	PIEDINI IN GOMMA / RUBBER FEET		

MODELLO MODEL		DLW14-TS/N	DLW18-TS/N	DLW23-TS/N
<b>DIMENSIONI IMBALLO PACKING DIMENSIONS</b>				
LARGHEZZA WIDTH	(mm) (inches)	920 (36.2)	920 (36.2)	920 (36.2)
PROFONDITA' DEPTH	(mm) (inches)	1150 (45.3)	1150 (45.3)	1150 (45.3)
ALTEZZA HEIGHT	(mm) (inches)	1400 (55.1)	1400 (55.1)	1400 (55.1)
VOLUME VOLUME	m <sup>3</sup> (ft <sup>3</sup> )	1.5 (52.9)	1.5 (52.9)	1.5 (52.9)
PESO LORDO GROSS WEIGHT	(Kg) (lb)	431.1 (950)	447.3 (985.5)	467.1 (1029.5)
PESO LORDO GABBIA IN LEGNO GROSS WEIGHT WOODEN CAGE	(Kg) (lb)	465 (1025)	481 (1060)	503 (1109)
PESO LORDO CASSA IN LEGNO GROSS WEIGHT WOODEN CASE	(Kg) (lb)	485 (1069)	501 (1104.5)	523 (1153)

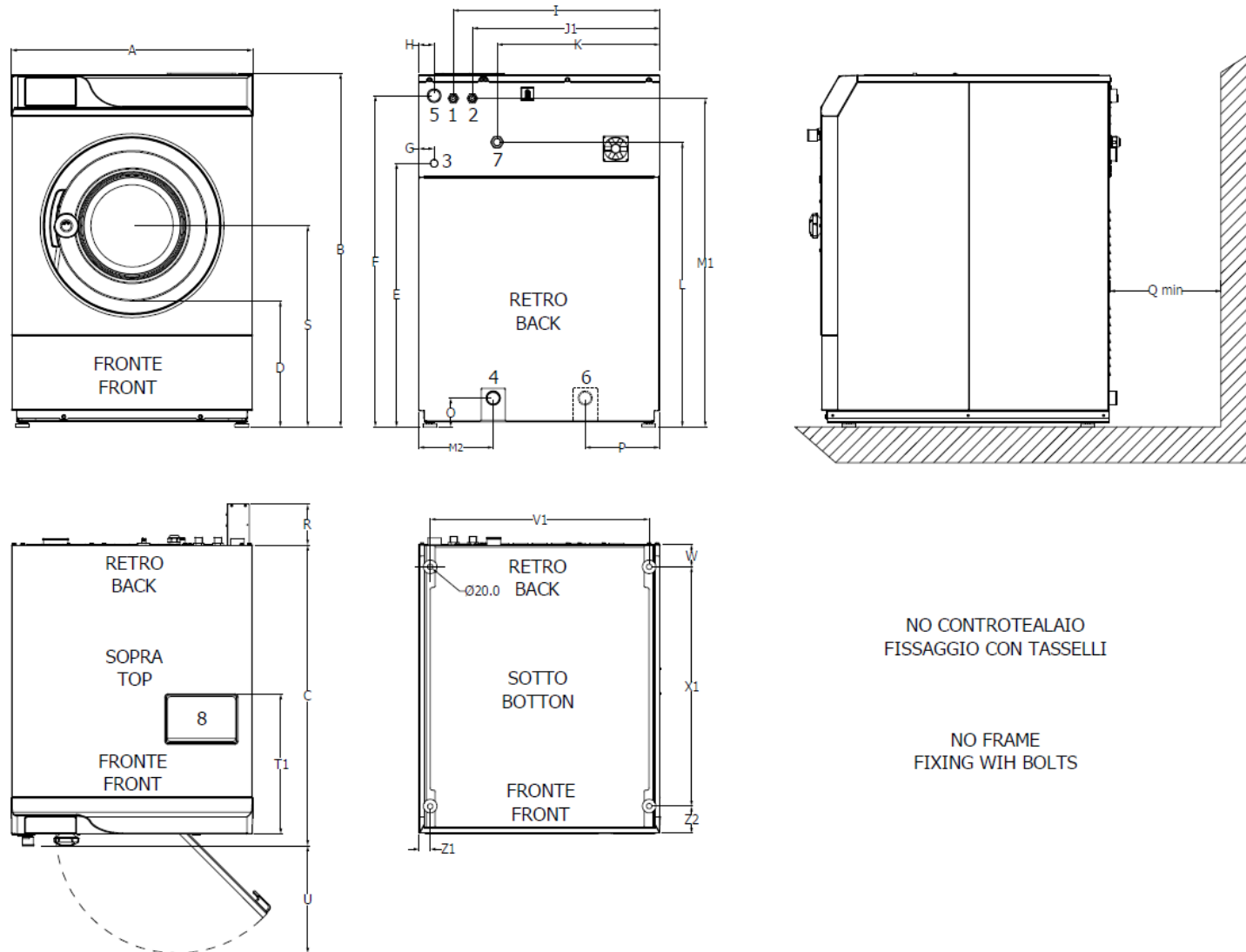
MODELLO MODEL		DLW14-TS/N	DLW18-TS/N	DLW23-TS/N
<b>PIANO DI CARICO CONTAINER – CONTAINER LOADING PLANE</b>				
CONTAINER 20"	Pz.	12	12	12
CONTAINER 40"	Pz.	26	26	26

MODELLO MODEL		DLW14-TS/N	DLW18-TS/N	DLW23-TS/N
<b>RISCALDAMENTO HEATING</b>				
RISCALDAMENTO ELETTRICO ELECTRICAL HEATING	kW	9	12	15
VAPORE (pos. 3)/CONSUMO* STEAM HEATING (pos. 3)/CONSUMPTION*	Ø	¾"	¾"	¾"
	bar	min 0,3 max 9	min 0,3 max 9	min 0,3 max 9
	(Kg) (lb)	0,3 (0.6)	0,4 (0.9)	0,6 (1.3)
<b>ACQUA WATER</b>				
CONNESSIONE ACQUA FREDDA (pos.1) COLD WATER INLET (pos.1)	Ø	¾"	¾"	¾"
CONNESSIONE ACQUA CALDA (pos.2) HOT WATER INLET (pos.2)	Ø	¾"	¾"	¾"
CONNESSIONI ACQUE WATER SUPPLY	bar	0,5÷10	0,5÷10	0,5÷10
CONSUMO ACQUA FREDDA* COLD WATER CONSUMPTION*	(l) (ft <sup>3</sup> )	92 (3.2)	119 (4.2)	152 (5.3)
CONSUMO ACQUA CALDA* HOT WATER CONSUMPTION*	(l) (ft <sup>3</sup> )	27 (0.9)	34 (1.2)	44 (1.5)
CONSUMO ACQUA* WATER CONSUMPTION*	(l) (ft <sup>3</sup> )	119 (4.2)	153 (5.4)	196 (6.9)
SCARICO (pos.4) DRAIN (pos.4)	Ø (mm) Ø (inches)	50 (2)	50 (2)	50 (2)
PORTATA SCARICO DRAIN FLOW	lt/min (ft <sup>3</sup> /min)	160 (5.6)	160 (5.6)	160 (5.6)

MODELLO MODEL		DLW14-TS/N	DLW18-TS/N	DLW23-TS/N
<b>ASSORBIMENTI ELETTRICI 50/60Hz (pos.7) ELECTRICAL ABSORPTIONS 50/60Hz (pos.7)</b>				
RISCALDAMENTO ELETTRICO ELECTRICAL HEATING  3ph400V-480V(+N)/3ph230V/1ph230V  CONSUMO*/CONSUMPTION*	kW	11	14	17
	A	17/26/43	22/38/66	27/47/80
	kWh	1,5	1,5	1,6
RISCALDAMENTO VAPORE, HOT WATER STEAM, HOT WATER HEATING  3ph400V÷480V(+N)/3ph230V/1ph230V  CONSUMO*/CONSUMPTION*	kW	1,5	1,5	1,5
	A	6/6/10	6/6/10	6/6/12
	kWh	0,8	0,8	0,9

\* Lavaggio "COTONE" 60°C, EN60456, tab. A2: lavaggio 60°C (15') e 4 risciacqui a freddo (3'+3'+2'+2'), ritmo motore 12"/3"/12"; centrifughe intermedie e 5' di centrifuga finale: cotone 180gr/m<sup>2</sup>. Acqua fredda a 15°C; acqua calda servita a 60°C / \* Cycle "COTTON" 60°C, EN60456, tab. A2: wash 60°C (15') and 4 cold rinses (3'+3'+2'+2'), motor rhythm 12"/3"/12"; middle spins and 5' final spin: cotton 180gr/m<sup>2</sup>. Cold water 15°C, hot water supply 60°C.

**DLW14-TS/N**   **DLW18-TS/N**   **DLW23-TS/N**



(mm) / (inches)	<b>DLW14-TS/N</b>	<b>DLW18-TS/N</b>	<b>DLW23-TS/N</b>
<b>A (larghezza / width)</b>	880 (34.6)	880 (34.6)	880 (34.6)
<b>B (altezza / high)</b>	1285 (50.6)	1285 (50.6)	1285 (50.6)
<b>C (prof. / depth)</b>	905 (35.6)	1010 (39.7)	1100 (43.3)
<b>D</b>	460 (18.1)	460 (18.1)	460 (18.1)
<b>E</b>	963 (37.9)	963 (37.9)	963 (37.9)
<b>F</b>	1210 (47.6)	1210 (47.6)	1210 (47.6)
<b>G</b>	56 (2.2)	56 (2.2)	56 (2.2)
<b>H</b>	56 (2.2)	56 (2.2)	56 (2.2)
<b>I</b>	754 (29.7)	754 (29.7)	754 (29.7)
<b>J1</b>	661 (26)	661 (26)	661 (26)
<b>K</b>	594 (23.4)	594 (23.4)	594 (23.4)
<b>L</b>	1041 (41)	1041 (41)	1041 (41)
<b>M1</b>	1200 (47.2)	1200 (47.2)	1200 (47.2)
<b>M2</b>	272 (10.70)	272 (10.70)	272 (10.70)
<b>O</b>	105 (4.1)	105 (4.1)	105 (4.1)
<b>P</b>	232 (9.13)	232 (9.13)	232 (9.13)
<b>Q</b>	600 (23.6)	600 (23.6)	600 (23.6)

(mm) / (inches)	DLW14-TS/N	DLW18-TS/N	DLW23-TS/N
R	150 (5.9)	150 (5.9)	150 (5.9)
S	735 (28.9)	735 (28.9)	735 (28.9)
T1	510 (20)	510 (20)	510 (20)
U	528 (20.8)	528 (20.8)	528 (20.8)
V1	800 (31.5)	800 (31.5)	800 (31.5)
W	80 (3)	80 (3)	80 (3)
X1	679 (26.7)	784 (30.8)	874 (34.4)
Z1	40 (1.6)	40 (1.6)	40 (1.6)
Z2	99 (3.9)	99 (3.9)	99 (3.9)
pos.1	ACQUA FREDDA / COLD WATER		
pos.2	ACQUA CALDA / HOT WATER		
pos.3	VAPORE DIRETTO / DIRECT STEAM (solo machine vapore / only steam heated)		
pos.4	SCARICO ACQUA / DRAIN VALVE		
pos.5	SFIATO / VENT		
pos.6	SECONDO SCARICO ACQUA / SECOND DRAIN VALVE (optional)		
pos.7	ALIMENTAZIONE ELETTRICA / ELECTRICAL POWER SUPPLY		
pos.8	CARICO DETERSIVI / DETERGENT LOAD		