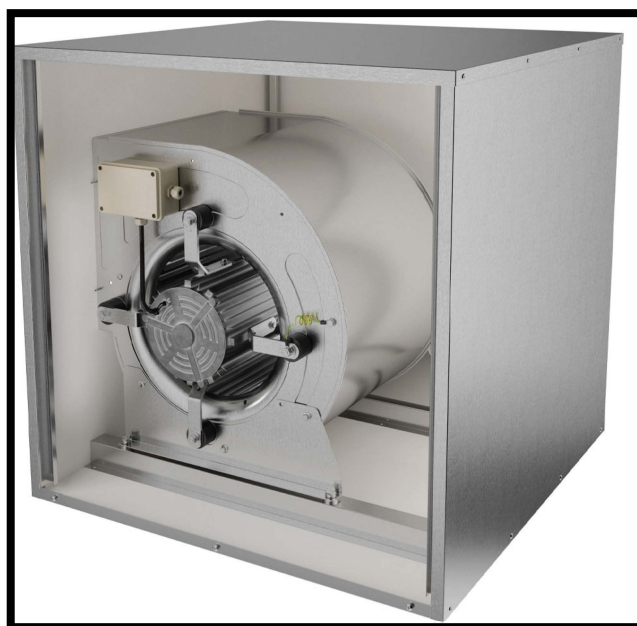
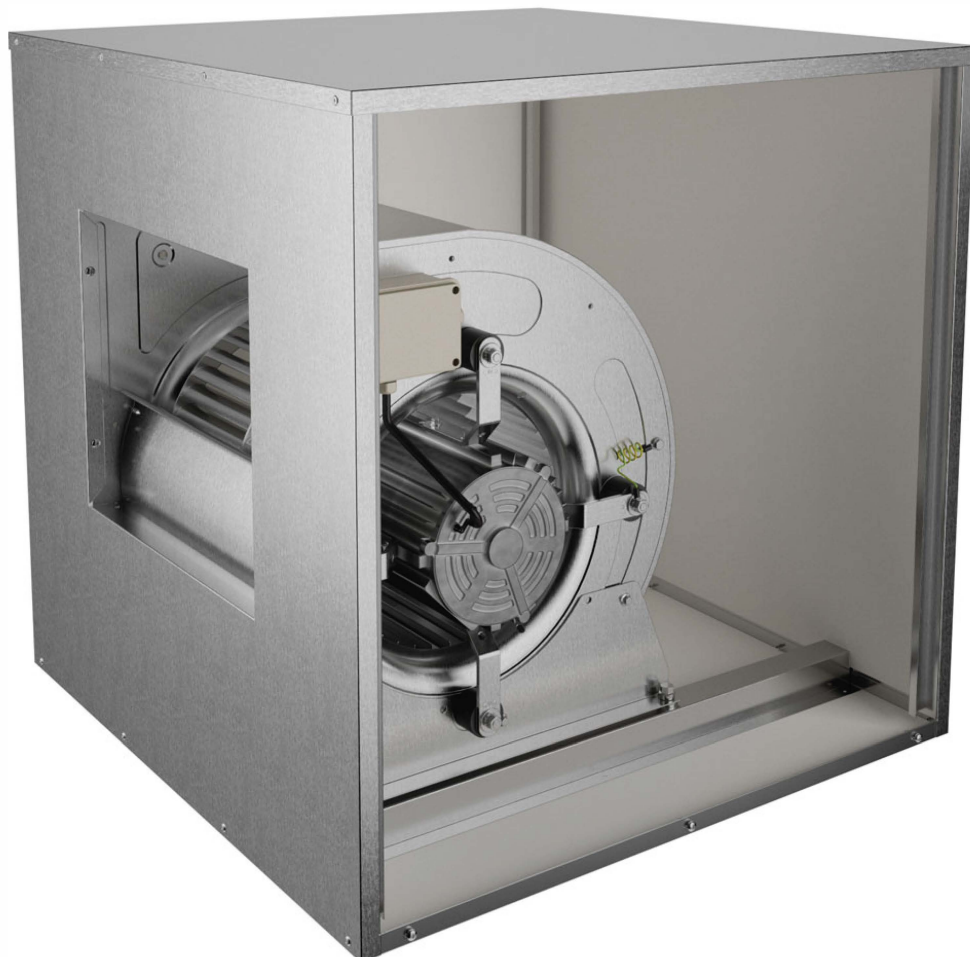


MOD : CA9/7/25

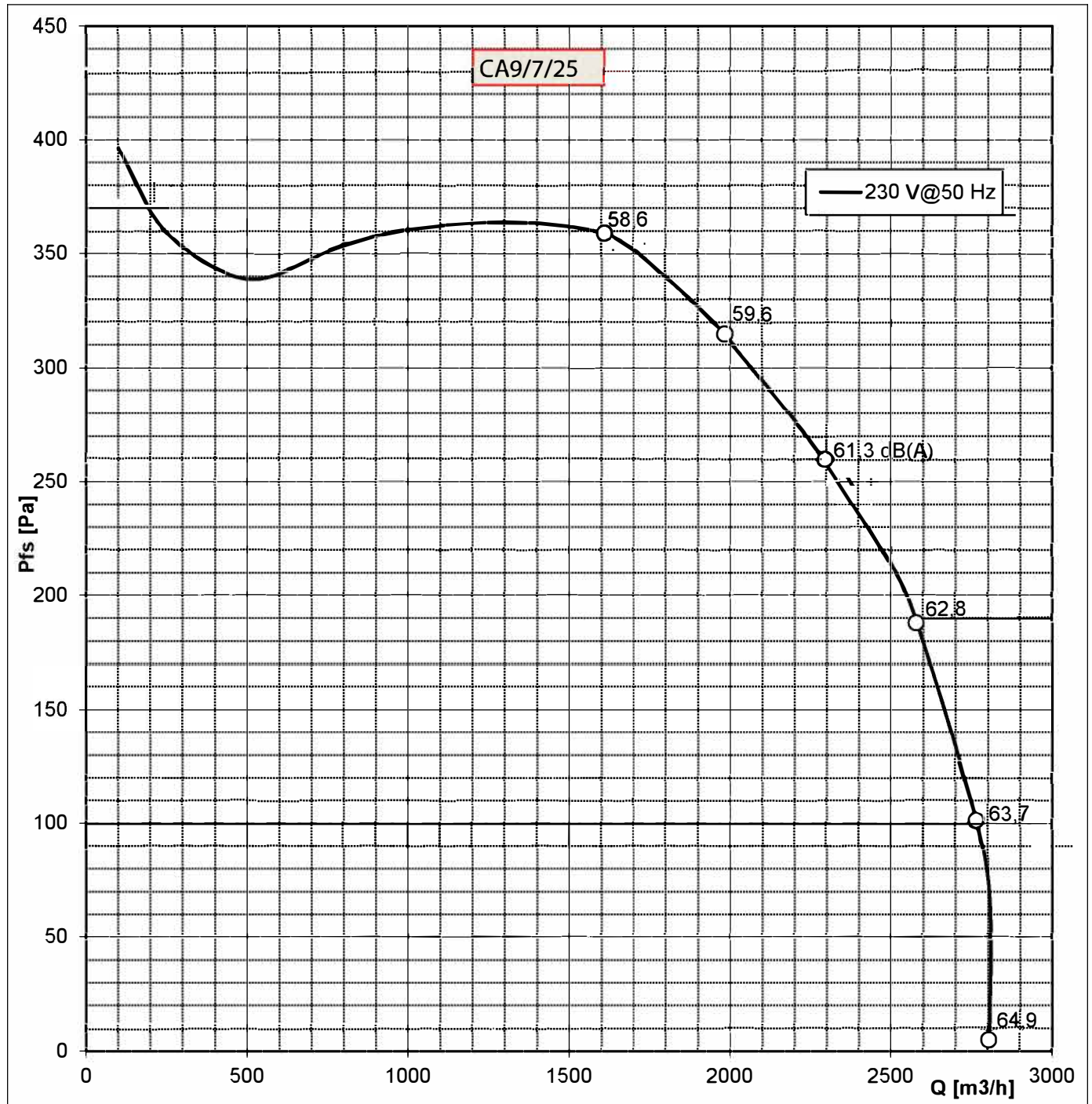
Production code : BERMCK9/7

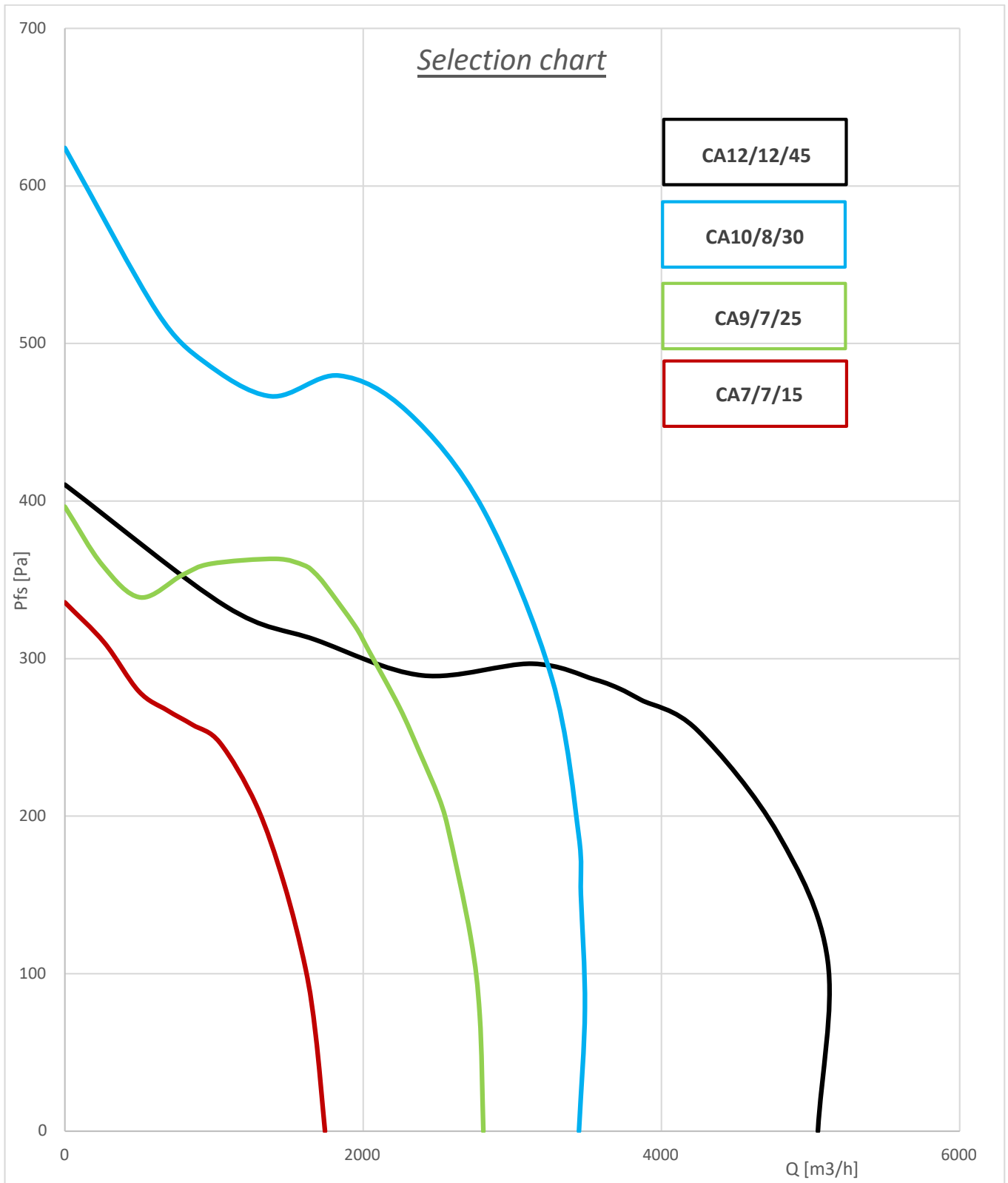


Air density (γ): 1.20 kg/m³
 Installation type "B": free inlet, ducted outlet
 12000 m³/h fan test chamber according to AMCA 210/05 fig. 12
 Free field Lp(A) measurements at 1 m according to ISO 3746:2011

Unit type:	CA9/7/25	Motor code:	2011017	Motor Th. Prot.:	YES IN
Date:	2018/05/31	Motor power [W]:	420	Capacitor [μF]:	8
Power supply[V]:	230 1~	Motor poles:	4	Unit max. abs. current [A]:	3,3
Frequency [Hz]:	50	Mot. prot. class:	IP55	Unit max. abs. power [W]:	760
		Mot. ins. class:	F		

ErP status: ErP 2018





CI RISERVIAMO A TERMINI DI LEGGE LA PROPRIETA' DI QUESTO DISEGNO
CON IL DIVIETO DI RIPRODURLO O RENDERSLO COMUNQUE NOTO
A DITTE CONCORRENTI O A TERZI SENZA LA NOSTRA APPROVAZIONE.

ACCORDING TO THE LAW RESERVE THE RIGHT OF OWNERSHIP OF THIS DRAWING
WITH PROHIBITION TO EITHER REPRODUCE IT OR NOTIFY IT
TO COMPETITORS AND THIRD PARTIES WITHOUT AUTHORISATION

