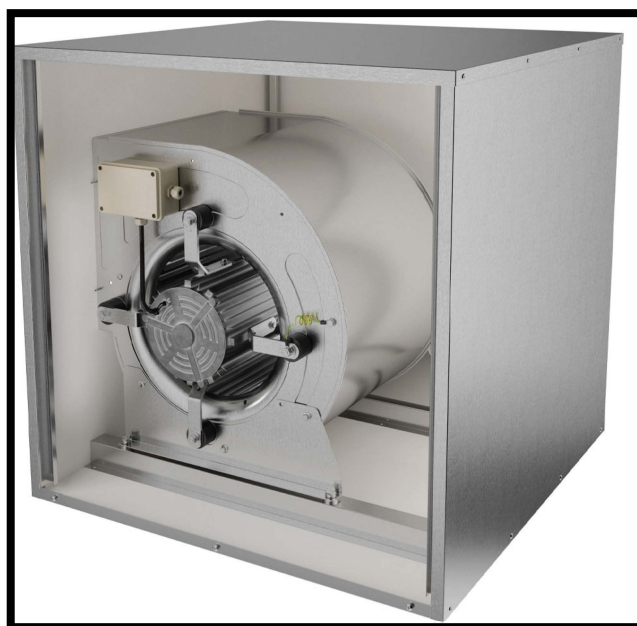
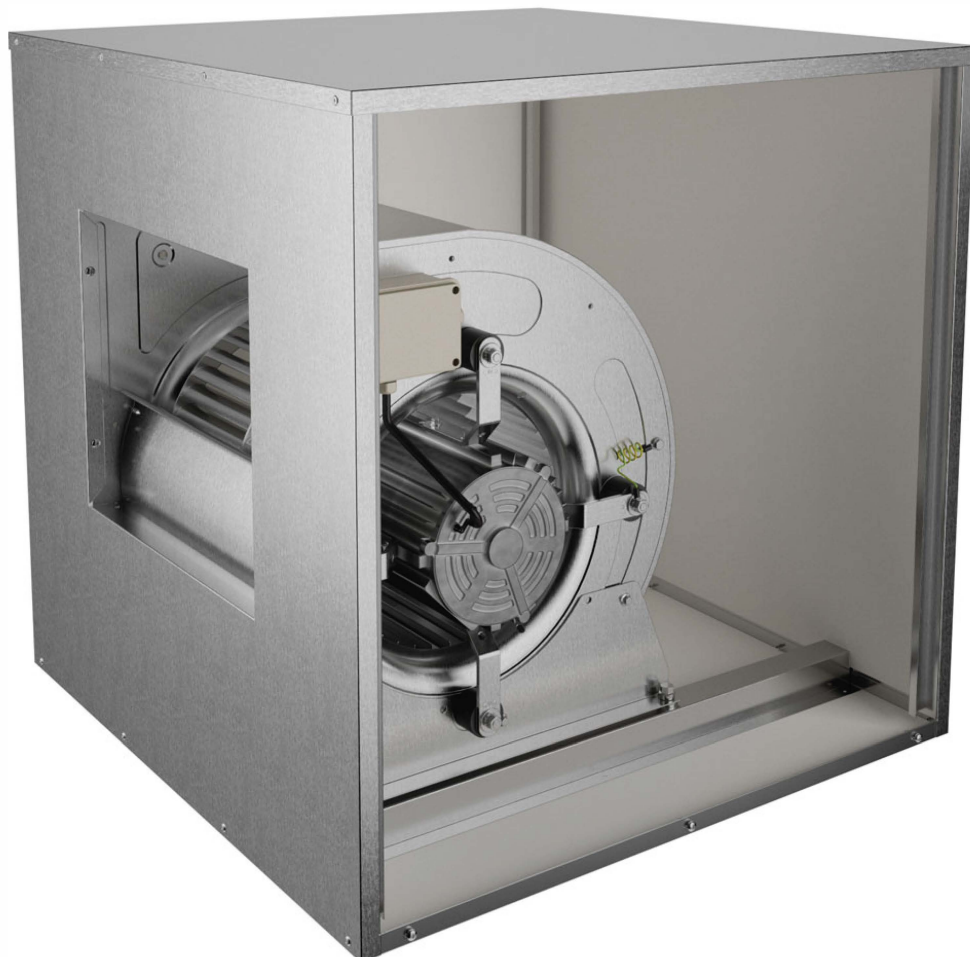


MOD : CA7/7/15

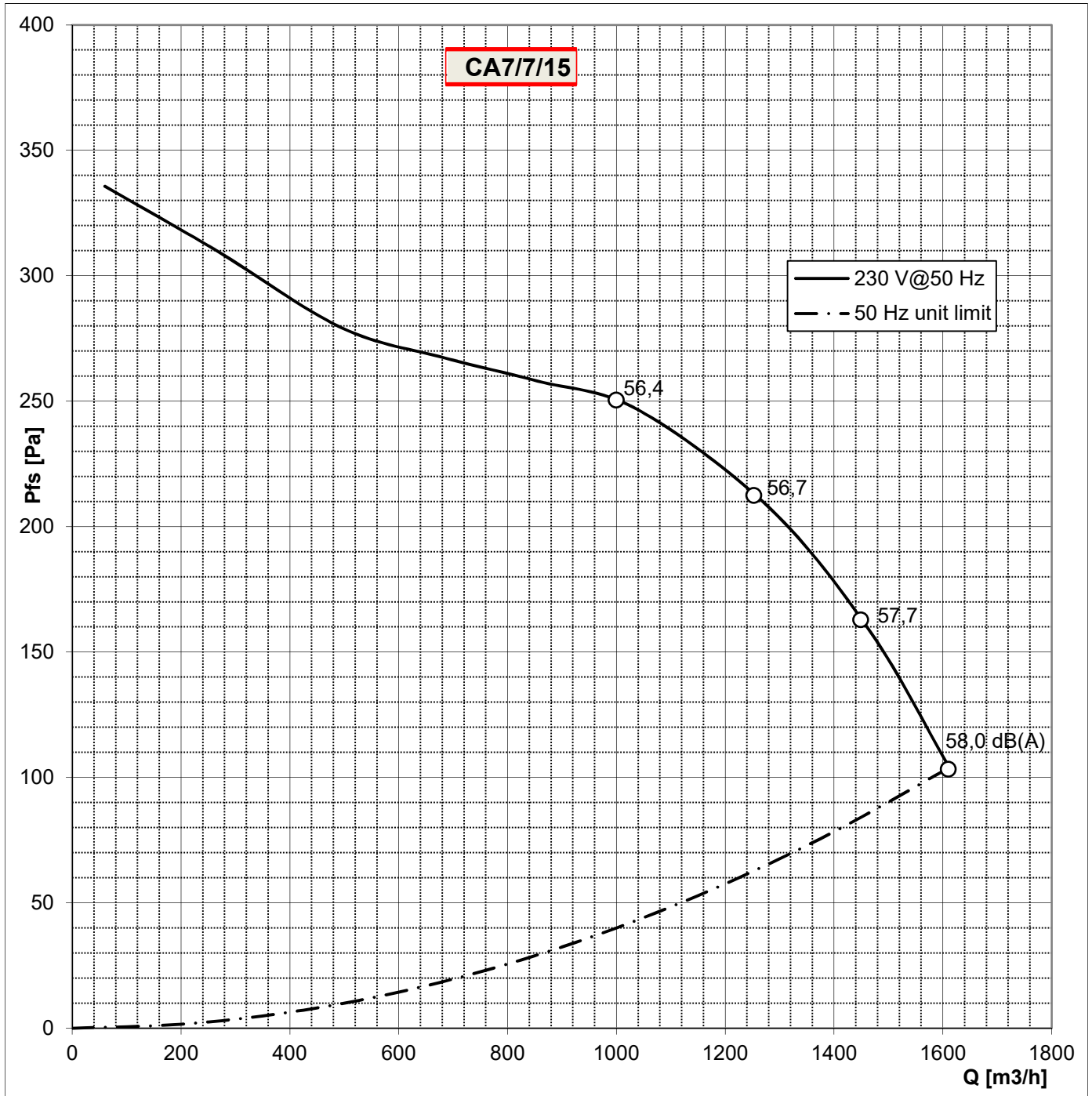
Production code : BERMCK7/7

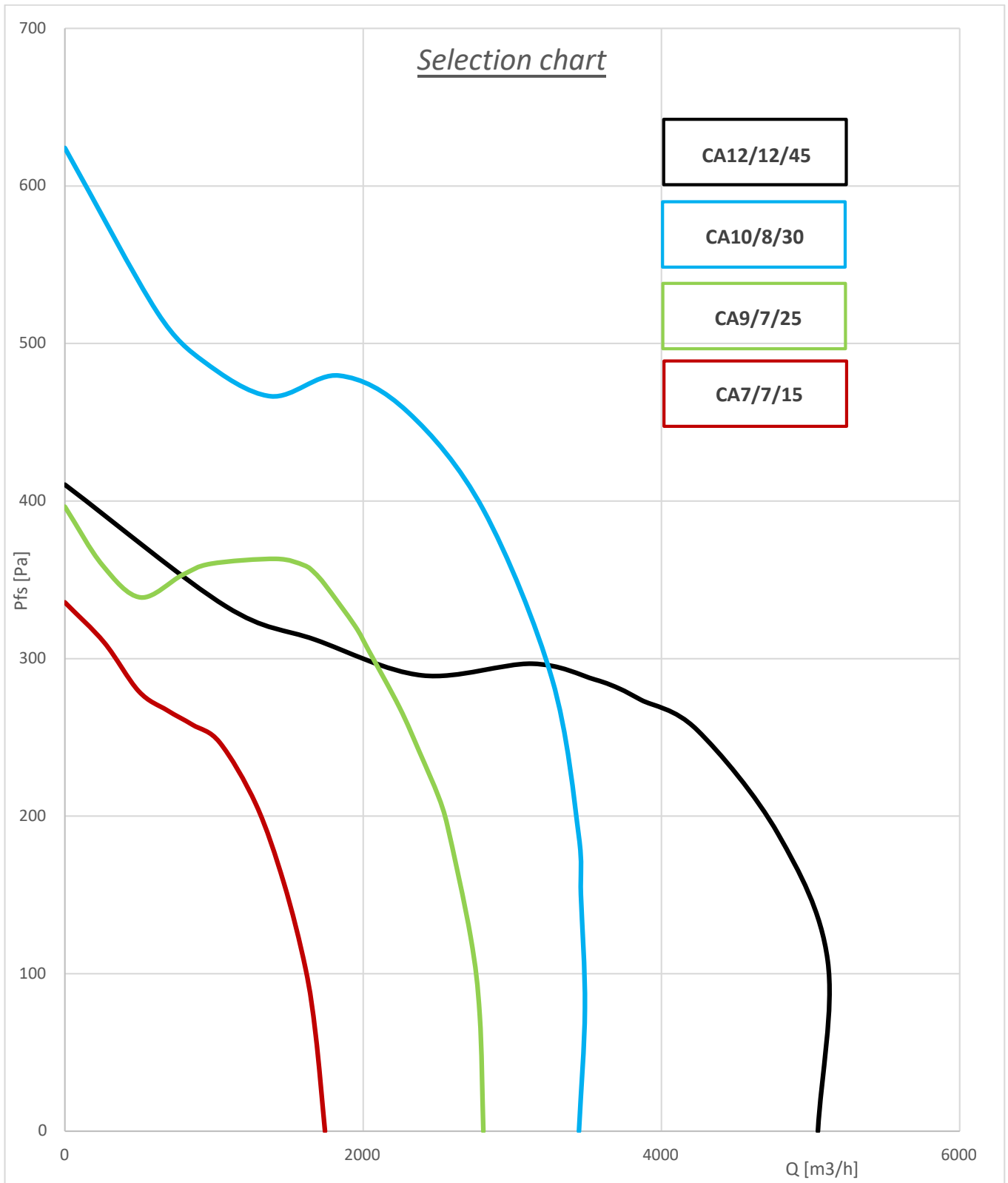


Air density (γ): 1.20 kg/m³
 Installation type "B": free inlet, ducted outlet
 12000 m³/h fan test chamber according to AMCA 210/05 fig. 12
 Free field Lp(A) measurements at 1 m according to ISO 3746:2011

Unit type:	CA7/7/15	Motor code:	211100G	Motor Th.prot:	YES IN
Date:	2017/02/15	Motor power [W]:	120	Capacitor [μF]:	6
Power supply[V]:	230 1~	Motor poles:	4	Unit max. abs. current [A]:	1,3
Frequency [Hz]:	50	Mot. prot. class:	IP44	Unit max. abs. power [W]:	300
		Mot. ins. class:	F		

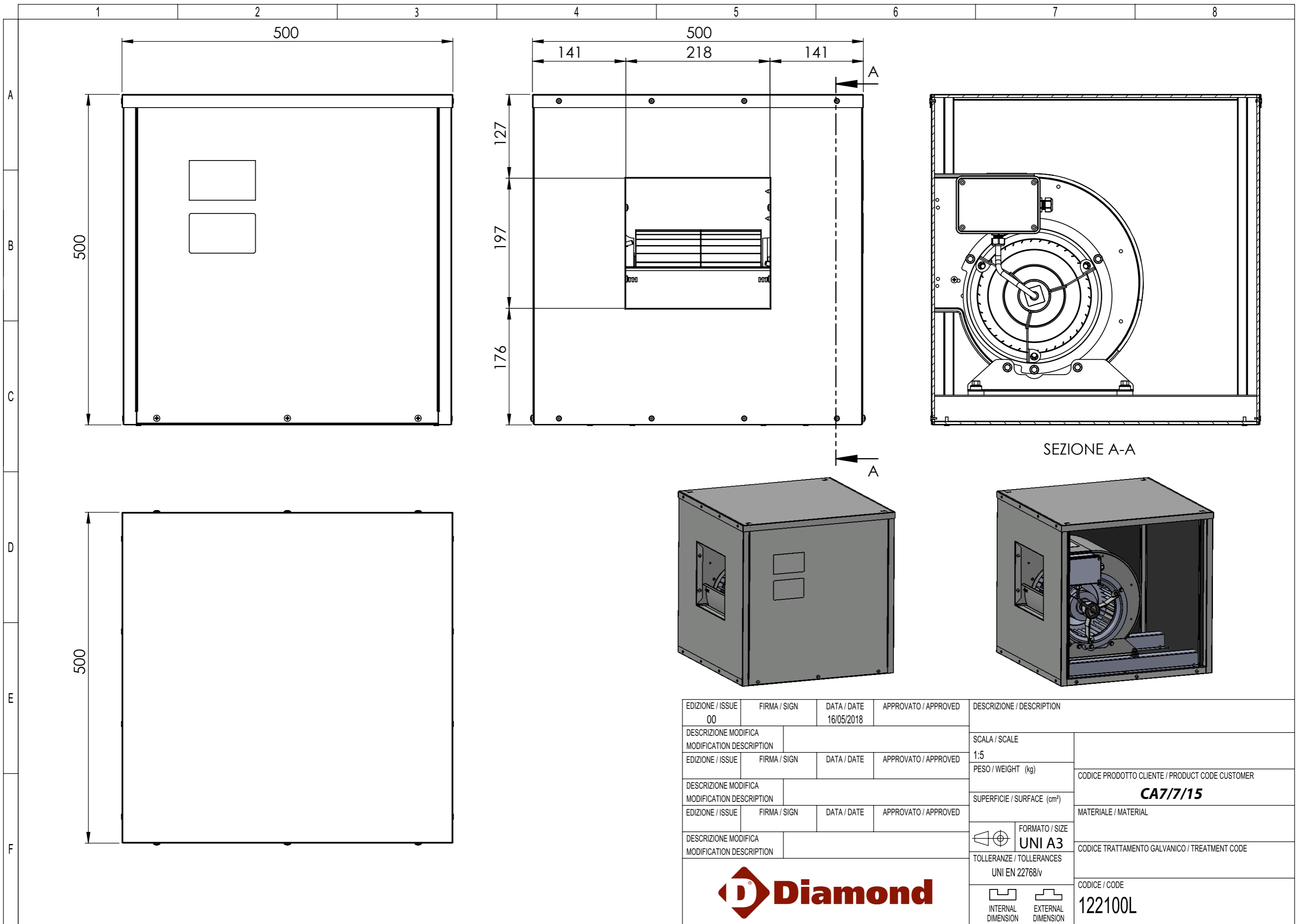
ErP status: ErP 2018





CI RISERVIAMO A TERMINI DI LEGGE LA PROPRIETÀ DI QUESTO DISEGNO
CON IL DIVIETO DI RIPRODURLO O RENDERSLO COMUNQUE NOTO
A DITTE CONCORRENTI O A TERZI SENZA LA NOSTRA APPROVAZIONE.

ACCORDING TO THE LAW RESERVE THE RIGHT OF OWNERSHIP OF THIS DRAWING
WITH PROHIBITION TO EITHER REPRODUCE IT OR NOTIFY IT
TO COMPETITORS AND THIRD PARTIES WITHOUT AUTHORISATION



SEZIONE A-A

EDIZIONE / ISSUE 00	FIRMA / SIGN	DATA / DATE 16/05/2018	APPROVATO / APPROVED	DESCRIZIONE / DESCRIPTION	
DESCRIZIONE MODIFICA MODIFICATION DESCRIPTION				SCALA / SCALE 1:5	CODICE PRODOTTO CLIENTE / PRODUCT CODE CUSTOMER CA7/7/15
EDIZIONE / ISSUE	FIRMA / SIGN	DATA / DATE	APPROVATO / APPROVED	PESO / WEIGHT (kg)	
DESCRIZIONE MODIFICA MODIFICATION DESCRIPTION				SUPERFICIE / SURFACE (cm²)	MATERIALE / MATERIAL
EDIZIONE / ISSUE	FIRMA / SIGN	DATA / DATE	APPROVATO / APPROVED	FORMATO / SIZE UNI A3	CODICE TRATTAMENTO GALVANICO / TREATMENT CODE
DESCRIZIONE MODIFICA MODIFICATION DESCRIPTION				TOLLERANZE / TOLLERANCES UNI EN 22768/v	
				INTERNAL DIMENSION	EXTERNAL DIMENSION
				CODICE / CODE 122100L	