



MOD : PK-CIG-EV

Production code : LV008429_00

Jet engine compressor drawings

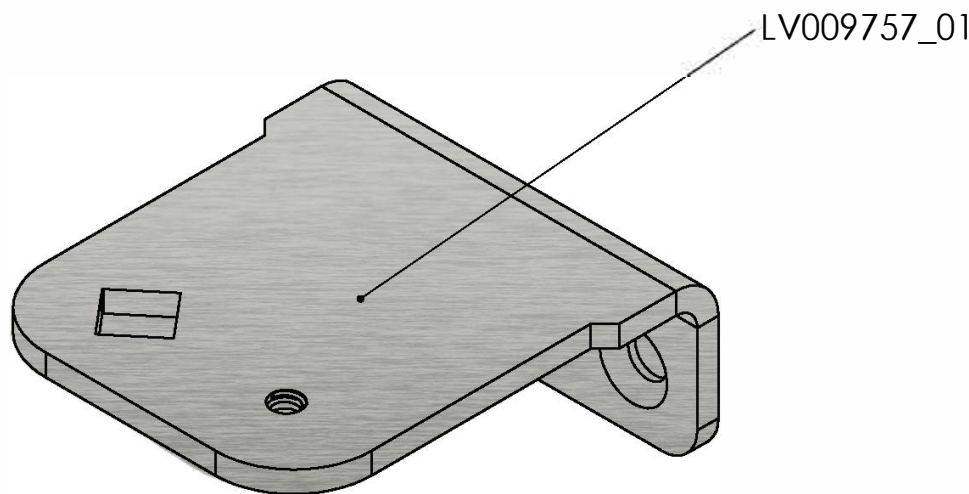
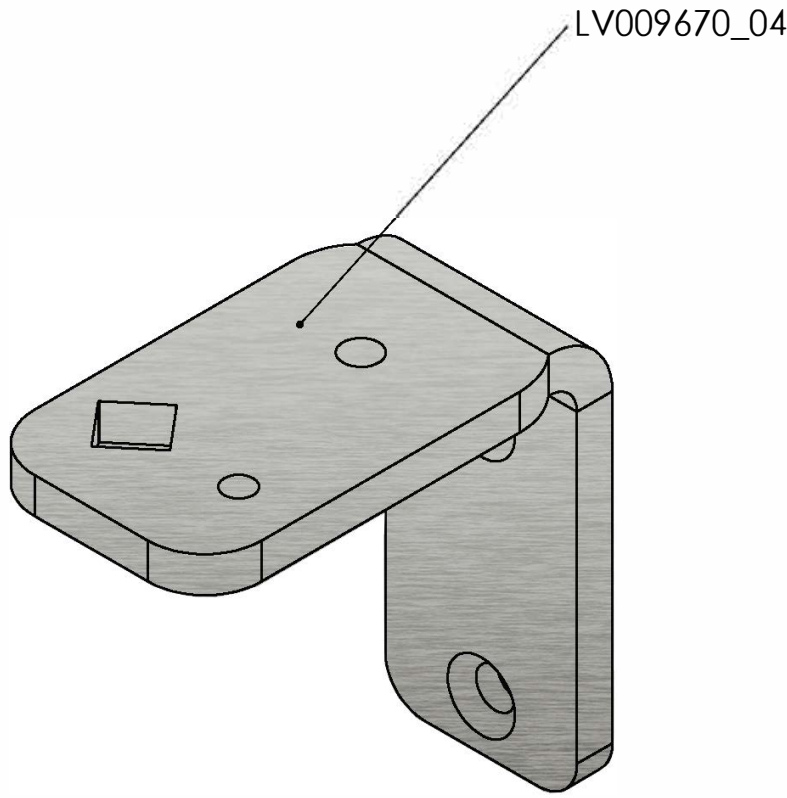
09/2025

This drawing contains confidential information and is the property of DIAMOND without whose permission it may not be copied, shown or handed to a third party or otherwise used, and it is to be returned promptly upon request to the LAV.IN, which is responsible for the drawing.
 SUPPLY SPECIFICATIONS / SPECIFICHE DI FORNITURA
 Remove all punching burrs after machining or press-forming process, draft angle 2°, fillets not quoted R=2, internal bend radius as thickness, chamfers not quoted: 0.5x45°. For other specifications please contact the Technical Department.

| | | | |
|--|------|----|---------|
| | 0.4 | — | 0.2/100 |
| | 0.4 | // | 0.2/100 |
| | 0.25 | ⊥ | 0.2/100 |

Angles ± 1°
 Angoli ± 1°

| | | | | | | | | |
|-------------------------------------------------------------|-----------------------------------------|-------|-------|-------|-------|-------|-------|-------|
| General tolerance - Tolleranza generale: UNI EN 22768/1 - C | 0.00 | 30.0 | 120 | 315 | 1000 | 2000 | > | |
| | Length and diam. / Lunghezza e diametri | 6.00 | 30.0 | 120 | 315 | 1000 | 4000 | 4000 |
| Tolerance / Tolleranza | ± 0.2 | ± 0.5 | ± 0.8 | ± 1.2 | ± 2.0 | ± 3.0 | ± 4.0 | ± 5.0 |
| | | | | | | | | |



| | | | | | |
|-------------------------------------------------------------------------------------------------------------------------------------------------------------------------------------------------------------------------------------------------------------------------------------------------------------------------------------------------|---------------------------------------------|----------------|--------------------------------|---------------------------|------------------------------|
| | | | SIMMETRICO/Simmetrical | TIPO/Type | GRUPPO/Group |
| | RIFERIMENTO / Reference PK-CIG-EV | CODICE CLIENTE | MATERIALE/Material | | PESO/Weight (kg) |
| | | | GREZZO/Stock size <i>mm</i> | FIRMA/Sign <i>GB</i> | Orientamento |
| DENOMINAZIONE/Name KIT REVERSIBILITA' PORTA | | | FINITURA/Finish | SCALA/Scale 1:2 | DATA/Date 02/09/25 |
| Il presente disegno è proprietà della DIAMOND Non può essere copiato o mostrato a terzi senza preventiva autorizzazione scritta. La Società tutela a termini di legge. This drawing is property of DIAMOND and may not be reproduced nor disclosed to third parties without the written consent of DIAMOND. Any abuse will be prosecuted. | | | | | REV/Rev 00 |
| 4 | 3 | 2 | 1 | SHEET 1 OF 1 | |