

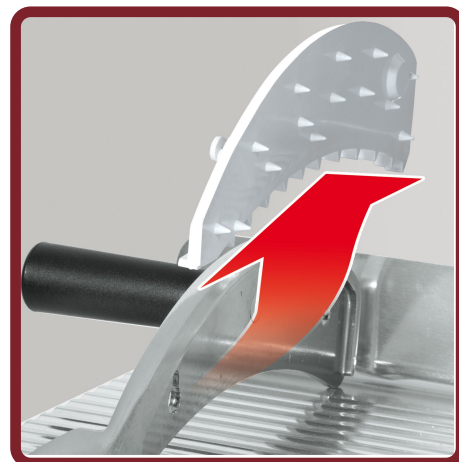
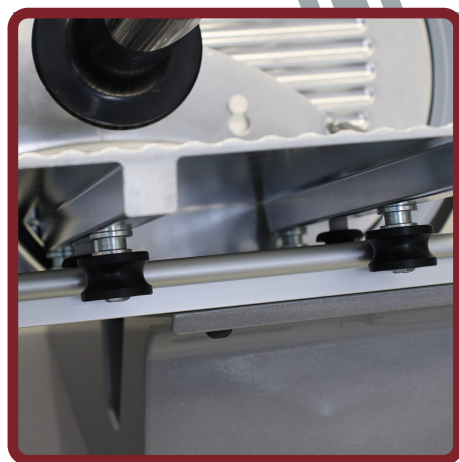
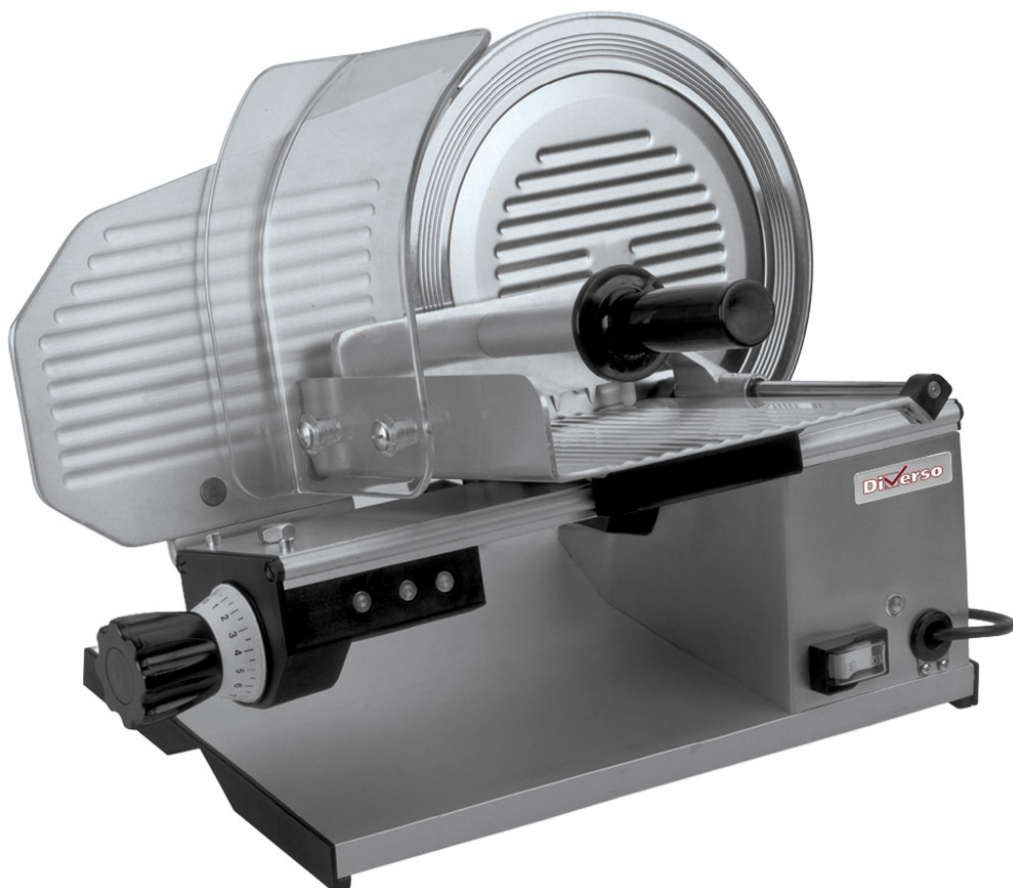


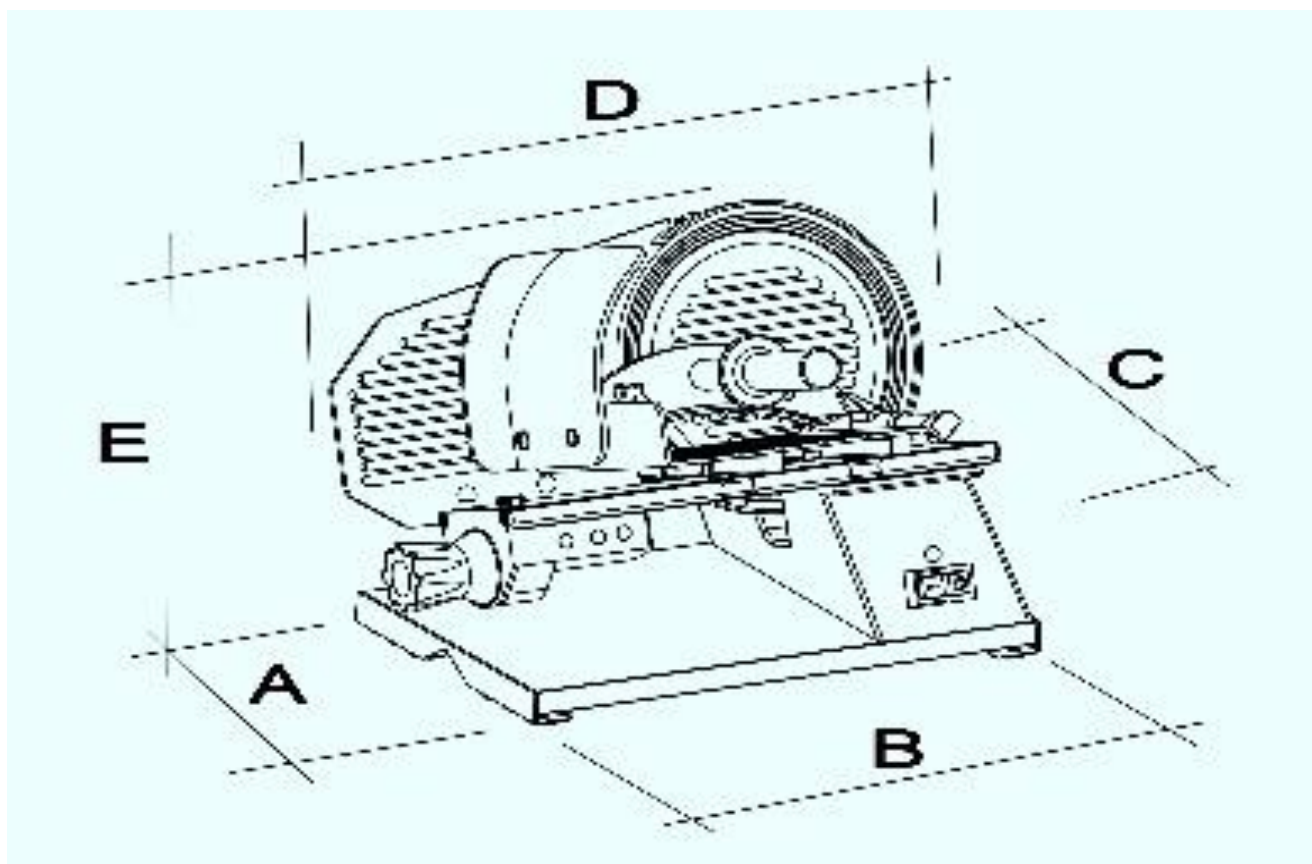
**MOD : WR-275R-02**

**Production code : 903301C/DIVERSO - TOP 275**

**05/2025**

Professional slicer





Model	Code	Blade Ø	Weight	Power	Dimensions				
					A	B	C	D	E
WR-275R-02	903301C/DIVERSO TOP 275	275 mm	15 kg	200 watts	28	44	42	53	42

- The slicer is built with anodic oxidation aluminium structure.
- Very sturdy and easy to use and clean with little maintenance.
- Excellent for cutting meats, vegetables and cheeses.
- The blade is made in non sticking steel with special grooves.
- Stainless steel blade protection fixed ring.
- Stainless steel cover blade.
- Double stones sharpening accessory included.
- Removable carriage with locking sail device.
- Strong fan silenced professional motor.
- Gear transmission.
- Two buttons on off switch with relais.
- The slicer was designed and manufactured according to international standards for safety, hygiene and food contact.
- Slicing thickness 0-13 mm.