

09/2016

Mod: SDGT/10-CL


Production code: 646572



Diamond
catering equipment

PARAMETER LIST AND ERRORS “TOUCHLINE” OVENS

**SOFTWARE VERSION:
POWER: P1.60
USER: U6.21**

		MODEL					
		ONE					



TITLE
PARAMETER LIST AND ERRORS "TOUCHLINE" OVENS,
SOFTWAREVERSION 6.21 (USER INTERFACE)

MODEL NUMBER REV
ONE 411400009 R.001

TITLE
PARAMETER LIST AND ERRORS "TOUCHLINE" OVENS, FIRMWARE VERSION 6.21 (USER INTERFACE)

Tipo:						LW 6 1/1		LW 10 1/1		LW 20 1/1		LW 10 2/1		LW 20 2/1		LW 6 2/1		RANGE								
U = User: User modifiable parameters (available in Make-It-Mine)																										
S = Service: Service only parameters																										
RTC = Clock: Real Time Clock parameters (will be unaffected by the parameters default command)																										
Par N°	Name	Type	Description	Unit measure	Default	ELT		GAS		ELT		GAS		ELT		GAS		ELT		GAS		Min	Max			
						T	K	T	K	T	K	T	K	T	K	T	K	T	K	T	K					
1	SEC	RTC	Seconds		-																	0	59			
2	MIN	RTC	Minutes		-																	0	59			
3	HOUR	RTC	Hours		-																	0	23			
4	DAY	RTC	Day		-																	1	31			
5	MON	RTC	Month		-																	1	12			
6	YEAR	RTC	Year		-																	0	99			
7	GAS	S	Appliance type 0 = Electric 1 = Gas		0		1	1		1	1		1	1		1	1		1	1		1	1	0	1	
8	ENFL	S	Motorized valve 0 = None 1 = Motorized		1																		0	1		
9	FAHR	S	Temperature scale 0 = Celsius 1 = Fahrenheit		0	N1	N1	N1	N1	N1	N1	N1	N1	N1	N1	N1	N1	N1	N1	N1	N1	N1	N1	N1	0	1
10	CORT	S	Displayed temperature adjustment 0 = Disabled 1 = Enabled		1																		0	1		
11	NMOD	U	Temporary modifiable programs 0 = Enabled 1 = Disabled		0																		0	1		
12	DSOD	S	Oven cooks with door open 0 = Disabled 1 = Enabled		0																		0	1		
13	LAMB	S	Lambda sensor 0 = Disabled 1 = Enabled		1	0	0	0	0	0	0	0	0	0	0	0	0	0	0	0	0	0	0	1		
14	PRB	S	Core probe type 0 = None 1 = Single-point 2 = Multi-point		2	1 N12	1 N12	1 N12	1 N12	1 N12	1 N12	1 N12	1 N12	1 N12	1 N12	1 N12	1 N12	1 N12	1 N12	1 N12	1 N12	1 N12	0	2		



TITLE PARAMETER LIST AND ERRORS "TOUCHLINE" OVENS, SOFTWAREVERSION 6.21 (USER INTERFACE)		
MODEL ONE	NUMBER 411400009	REV R.001

TITLE
PARAMETER LIST AND ERRORS "TOUCHLINE" OVENS, FIRMWARE VERSION 6.21 (USER INTERFACE)

Tipo: U = User: User modifiable parameters (available in Make-It-Mine) S = Service: Service only parameters RTC = Clock: Real Time Clock parameters (will be unaffected by the parameters default command)			LW 6 1/1				LW 10 1/1				LW 20 1/1				LW 10 2/1				LW 20 2/1				LW 6 2/1				RANGE			
Par N°	Name	Type	Description	Unit measure	Default	ELT		GAS		ELT		GAS		ELT		GAS		ELT		GAS		ELT		GAS		Min	Max			
						T	K	T	K	T	K	T	K	T	K	T	K	T	K	T	K	T	K	T	K					
15	APPL	S	Oven level 5 = Convection (level K) 6 = Combi (level Touch)		6		5		5		5		5		5		5		5		5		5		5	5	6			
16	APPM	S	Oven model 0 = 6 GN 1/1 1 = 10 GN 1/1 2 = 20 GN 1/1 3 = 10 GN 2/1 4 = 20 GN 2/1 5 = 6 GN 2/1		0				1	1	1	1	2	2	2	2	3	3	3	3	4	4	4	4	5	5	5	5	0	5
17	STON	S	Minimum boiler ON during steam 100°C cycle	sec	5																					1	250			
18	STOF	S	Minimum boiler OFF during steam 100°C cycle	sec	20																					1	250			
19	ALFN	S	Locking alarms 0 = No error 1 = Upper fan motor 2 = Lower fan motor 3 = Both fan motors 4 = Boiler level probes		0																					0	4			
20	SPHB	S	Preheating temperature of the boiler	°C °F	85 185																50 122					0 32	100 212			
21	SINC	S	Threshold for boiler descaling warning	°C °F	115 239	130 266			130 266				130 266				130 266				130 266				130 266		0 32	150 302		
22	SEAL	S	Altitude above sea level	meters	0	N2		N2		N2		N2		N2		N2		N2		N2		N2		N2		0	4000			
23	HBYP	S	Max humidity value to stop the boiler	%	98																					80	100			
24	THMA	S	Max temperature for water injecton (humidifying)	°C °F	220 428																					0 32	300 572			
25	TRMA	S	Max temperature for water injecton (cooling)	°C °F	180 356																					0 32	300 572			
26	TRMN	S	Min temperature for water injecton (humidifying)	°C °F	30 86																					0 32	300 572			
27	DUTM	S	Max time with cavity temperature higher than TCMS	min	6																					1	900			



TITLE
PARAMETER LIST AND ERRORS "TOUCHLINE" OVENS,
SOFTWAREVERSION 6.21 (USER INTERFACE)

MODEL NUMBER REV
ONE 411400009 R.001

TITLE
PARAMETER LIST AND ERRORS "TOUCHLINE" OVENS, FIRMWARE VERSION 6.21 (USER INTERFACE)

Tipo:		LW 6 1/1		LW 10 1/1		LW 20 1/1		LW 10 2/1		LW 20 2/1		LW 6 2/1		RANGE										
U = User: User modifiable parameters (available in Make-It-Mine)																								
S = Service: Service only parameters																								
RTC = Clock: Real Time Clock parameters (will be unaffected by the parameters default command)																								
Par N°	Name	Type	Description	Unit measure	Default	ELT		GAS		ELT		GAS		ELT		GAS		ELT		GAS		Min	Max	
						T	K	T	K	T	K	T	K	T	K	T	K	T	K	T	K			
28	COT	S	Cavity over-temperature alarm threshold (ETUC)	°C °F	320 608																	250 482	340 644	
29	BOT	S	Boiler over-temperature alarm threshold (ETUB)	°C °F	125 257	140 284				140 284				140 284				140 284				90 194	200 392	
30	HABP	S	Steam condenser ON threshold	°C °F	90 194								93 199	93 199				83 181	93 199	93 199		50 122	300 572	
31	STBP	S	OLD (internal use)	°C °F	80 176																	50 122	100 212	
32	DBON	S	Automatic boiler draining timeout	h/4	1																	0	999	
33	TCDB	S	Max boiler temperature for automatic drain	°C °F	50 122	N4				N4				N4				N4			N4		0 32	100 212
34	OCA1	S	Cavity temperature offset	°C °F	0,0 0																	-10,0 -18	10,0 18	
35	SBC	S	Electronic board cooling threshold	°C °F	25 77																	0 32	55 131	
36	HBOL	S	Boiler working time from last automatic drain	h/4	0																	0	32000	
37	HAIR	S	Convection cycle counter	h/4	0																	0	32000	
38	HSTM	S	Steam cycle counter	h/4	0																	0	32000	
39	HCMB	S	Combi cycle counter	h/4	0																	0	32000	
40	BAUD	S	EIA485 isolated port baudrate 0 = 1200 baud 1 = 2400 baud 2 = 4800 baud 3 = 9600 baud 4 = 19200 baud 5 = 38400 baud 6 = 57600 baud		3																		0	6
41	ADDR	S	EIA485 isolated port address		1																	1	250	



Diamond
catering equipment

TITLE

PARAMETER LIST AND ERRORS "TOUCHLINE" OVENS,
SOFTWAREVERSION 6.21 (USER INTERFACE)

MODEL

ONE

NUMBER

411400009

REV

R.001

TITLE
PARAMETER LIST AND ERRORS "TOUCHLINE" OVENS, FIRMWARE VERSION 6.21 (USER INTERFACE)

TITO:		U = User:		User modifiable parameters (available in Make-It-Mine)		LW 6 1/1		LW 10 1/1				LW 20 1/1				LW 10 2/1				LW 20 2/1				LW 6 2/1				RANGE	
S = Service:		Service only parameters		RTC = Clock:		Real Time Clock parameters (will be unaffected by the parameters default command)		ELT		GAS		ELT		GAS		ELT		GAS		ELT		GAS		ELT		GAS		Min	Max
Par N°	Name	Type	Description	Unit measure	Default	T	K	T	K	T	K	T	K	T	K	T	K	T	K	T	K	T	K	T	K	T	K		
42	HCCP	U	HACCP mode 0 = Disabled 1 = Base 2 = Integrated 3 = Monitor		0																						0	3	
43	TPRN	S	HACCP log time	sec	60																						0	250	
44	STCA	S	Cavity heaters PWM: Start G20 G25 G30 GPL G20 Australia AGA G31 Australia AGA	%	40			N3	N3			N3	N3			N3	N3			N3	N3			N3	N3			0	100
45	HACA	S	Cavity heaters PWM: Reduced power G20 G25 G30 GPL G20 Australia AGA G31 Australia AGA	%	40			N3	N3			N3	N3			N3	N3			N3	N3			N3	N3			0	100
46	FUCA	S	Cavity heaters PWM: Full power G20 G25 G30 GPL G20 Australia AGA G31 Australia AGA	%	80			N3	N3			N3	N3			N3	N3			N3	N3			N3	N3			0	100



Diamond
catering equipment

TITLE
PARAMETER LIST AND ERRORS "TOUCHLINE" OVENS,
SOFTWAREVERSION 6.21 (USER INTERFACE)

MODEL	NUMBER	REV
ONE	411400009	R.001

TITLE
PARAMETER LIST AND ERRORS "TOUCHLINE" OVENS, FIRMWARE VERSION 6.21 (USER INTERFACE)

TITO:																															
U = User: User modifiable parameters (available in Make-It-Mine)																															
S = Service: Service only parameters																															
RTC = Clock: Real Time Clock parameters (will be unaffected by the parameters default command)																															
Par N°	Name	Type	Description	Unit measure	Default	LW 6 1/1				LW 10 1/1				LW 20 1/1				LW 10 2/1				LW 20 2/1				LW 6 2/1				RANGE	
						ELT		GAS		ELT		GAS		ELT		GAS		ELT		GAS		ELT		GAS		ELT		GAS		Min	Max
						T	K	T	K	T	K	T	K	T	K	T	K	T	K	T	K	T	K	T	K	T	K	T	K		
47	STBO	S	Boiler heaters PWM: Start G20 G25 G30 GPL G20 Australia AGA G31 Australia AGA	%	40			N3			N3			N3			N3			N3			N3			N3			0	100	
48	HABO	S	Boiler heaters PWM: Reduced power G20 G25 G30 GPL G20 Australia AGA G31 Australia AGA	%	40			N3			N3			N3			N3			N3			N3			N3			0	100	
49	FUBO	S	Boiler heaters PWM: Full power G20 G25 G30 GPL G20 Australia AGA G31 Australia AGA	%	80			N3			N3			N3			N3			N3			N3			N3			0	100	
50	CLT1	S	Detergent injection time T1 (phase A)	100 ms	40	(50) N13	(50) N13	(50) N13	(50) N13	(50) N13	(50) N13	(50) N13	70	70	70	70	50	50	50	50	80	80	80	80	50	50	50	50	0	250	
51	CLT2	S	Detergent+water injection time T2 (phase A)	100 ms	15	(10) N13	(10) N13	(10) N13	(10) N13	(10) N13	(10) N13	(10) N13																	0	250	
52	CLT3	S	Rinse-aid injection time T3 (phase C)	100 ms	30								60	60	60	60	40	40	40	40	70	70	70	70	40	40	40	40	0	250	
53	CLT4	S	Water injection time T4 (phase C)	100 ms	15																								0	250	



Diamond
catering equipment

TITLE

PARAMETER LIST AND ERRORS "TOUCHLINE" OVENS,
SOFTWAREVERSION 6.21 (USER INTERFACE)

MODEL

ONE

NUMBER

411400009

REV

R.001

TITLE

PARAMETER LIST AND ERRORS "TOUCHLINE" OVENS, FIRMWARE VERSION 6.21 (USER INTERFACE)

Tipo:		U = User:		User modifiable parameters (available in Make-It-Mine)		LW 6 1/1		LW 10 1/1		LW 20 1/1		LW 10 2/1		LW 20 2/1		LW 6 2/1		RANGE						
S = Service:		Service only parameters		RTC = Clock:		Real Time Clock parameters (will be unaffected by the parameters default command)		ELT		GAS		ELT		GAS		ELT		GAS		Min	Max			
Par N°	Name	Type	Description	Unit measure	Default	T	K	T	K	T	K	T	K	T	K	T	K	T	K	T	K			
54	HUON	S	Humidifier ON time during low temperature combi cycle	100 ms	5																0	250		
55	OLBD	S	Lambda probe dry calibration point	76,29 μ V	-40																	-200	100	
56	PPM	S	Peak power management system 0 = Disabled 1 = Enabled		Disabled																	0	1	
57	DEMO	S	Demo mode 0 = Disabled 1 = Not available 2 = Portable (for simulator) 3=Event mode (for Exhibition)		0																	0	3	
58	TBON	S	OLD (internal use)	sec	0																	0	2400	
59	DTSB	S	Water filling delay during boiler draining	sec	255	N5				N5				N5				N5				0	255	
60	DSPS	U	Boiler preheating with oven in stop		Disabled																	0	1	
61	TCMS	S	High temperature working threshold	$^{\circ}$ C $^{\circ}$ F	280 536																	0 32	300 572	
62	ECLN	S	(Predisposizione per utilizzi futuri)	$^{\circ}$ C $^{\circ}$ F	99 210																	0 32	200 392	
63	FCLN	U	Forced cleaning cycle timeout after a cooking in Program mode 0 = No force clean; (Use only positive values).	min	0																		-1200	1200
64	ALIE	S	Detergent and rinse-aid level sensors 0 = Disabled 1 = Enabled		0																		0	1



TITLE
PARAMETER LIST AND ERRORS "TOUCHLINE" OVENS,
SOFTWAREVERSION 6.21 (USER INTERFACE)

MODEL ONE	NUMBER 411400009	REV R.001
---------------------	----------------------------	---------------------

TITLE
PARAMETER LIST AND ERRORS "TOUCHLINE" OVENS, FIRMWARE VERSION 6.21 (USER INTERFACE)

Tipo:		LW 6 1/1		LW 10 1/1		LW 20 1/1		LW 10 2/1		LW 20 2/1		LW 6 2/1		RANGE										
U = User: User modifiable parameters (available in Make-It-Mine)																								
S = Service: Service only parameters																								
RTC = Clock: Real Time Clock parameters (will be unaffected by the parameters default command)																								
Par N°	Name	Type	Description	Unit measure	Default	ELT		GAS		ELT		GAS		ELT		GAS		ELT		GAS		Min	Max	
						T	K	T	K	T	K	T	K	T	K	T	K	T	K	T	K			
65	HDUT	S	Cavity Heaters duty cycle 0 = Disabled 1 = Enabled		0																	0	1	
66	PREH	U	Cooking preheating 0 = Disabled 1 = Enabled		1																		0	1
67	PAUT	S	(Internal use)		1																		0	1
68	PFAC	S	(Internal use)		1																		0	1
69	MAN	S	(Internal use)		1																		0	1
70	E2PP	S	(Internal use)		1																		0	1
71	PASS	S	User password 0 = Disabled 1 = Enabled		0																		0	1
72	DCLO	S	(Internal use)		1																		0	1
73	ERTC	S	Real time clock 0 = Disabled 1 = Enabled		1																		0	1
74	ABLP	S	Force half power GAS ovens (internal use) 0 = Disabled 1 = Enabled		0																		0	1



TITLE PARAMETER LIST AND ERRORS "TOUCHLINE" OVENS, SOFTWAREVERSION 6.21 (USER INTERFACE)		
MODEL ONE	NUMBER 411400009	REV R.001

TITLE
PARAMETER LIST AND ERRORS "TOUCHLINE" OVENS, FIRMWARE VERSION 6.21 (USER INTERFACE)

Tito:		LW 6 1/1		LW 10 1/1				LW 20 1/1				LW 10 2/1				LW 20 2/1				LW 6 2/1				RANGE				
Par N°	Name	Type	Description	Unit measure	Default	ELT		GAS		ELT		GAS		ELT		GAS		ELT		GAS		ELT		GAS		Min	Max	
						T	K	T	K	T	K	T	K	T	K	T	K	T	K	T	K	T	K	T	K			T
75	ABTF	S	Quenching system temperature sensor 0 = Disabled 1 = Enabled		1																				0	1		
76	FAN	S	Cavity motor startup speed 0 = As set 1 = Force full speed 2 = Force half speed		1	2 N9	2 N9	2 N10	2 N10	2 N9	2 N9	2 N10	2 N10					N6 N6			N6 N6			N6 N6	0	2		
77	DHEA	S	Heaters delay when fan starts	sec	0			N8 N8				N8 N8					N7 N8	N7 N8			N7 N8	N7 N8			N7 N8	N7 N8	0	60
78	ANDL	S	AND condition for standard FSC risk 0 = Disabled 1 = Enabled		1																				0	1		
79	ANDH	S	AND condition for high FSC risk 0 = Disabled 1 = Enabled		0																				0	1		
80	HPTH	S	Probe temperature threshold in FSC	°C °F	50.0 122																				0.0 32	99.0 210		
81	HCTH	S	Cavity temperature threshold in FSC	°C °F	65.0 149																				0.0 32	400.0 752		
82	FL	S	F threshold in standard FSC risk	F/10	10																				0	999		
83	TCL	S	Probe threshold in standard FSC risk	°C °F	57 135																				0 32	99 210		



TITLE
PARAMETER LIST AND ERRORS "TOUCHLINE" OVENS,
SOFTWAREVERSION 6.21 (USER INTERFACE)

MODEL ONE	NUMBER 411400009	REV R.001
---------------------	----------------------------	---------------------

TITLE
PARAMETER LIST AND ERRORS "TOUCHLINE" OVENS, FIRMWARE VERSION 6.21 (USER INTERFACE)

Tipo:		LW 6 1/1		LW 10 1/1		LW 20 1/1		LW 10 2/1		LW 20 2/1		LW 6 2/1		RANGE									
U = User: User modifiable parameters (available in Make-It-Mine)																							
S = Service: Service only parameters																							
RTC = Clock: Real Time Clock parameters (will be unaffected by the parameters default command)																							
Par N°	Name	Type	Description	Unit measure	Default	ELT		GAS		ELT		GAS		ELT		GAS		ELT		GAS		Min	Max
						T	K	T	K	T	K	T	K	T	K	T	K	T	K	T	K		
84	FH	S	F threshold in high FSC risk	F/10	50																	0	999
85	TCH	S	Probe threshold in high FSC risk	°C °F	75 167																	0 32	99 210
86	HDTO	S	Open door timeout in FSC	sec	30																	0	255
87	LTC	U	Low Temperature Cooking 0 = Disabled 1 = Enabled		1																	0	1
88	DTPR	S	(Internal use)		0																	0	0
89	BROW	S	(Internal use)		0																	0	0
90	PROF	U	Proofing program 0 = Disabled 1 = Enabled		1																	0	1
91	REG	U	Reheating program 0 = Disabled 1 = Enabled		1																	0	1
92	ABSP	U	Start cooking by closing door 0 = Disabled 1 = Enabled		0																	0	1
93	FASI	U	Multiphase cooking 0 = Single phase 1 = Multiphase		1																	0	1



Diamond
catering equipment

TITLE

PARAMETER LIST AND ERRORS "TOUCHLINE" OVENS,
SOFTWAREVERSION 6.21 (USER INTERFACE)

MODEL

ONE

NUMBER

411400009

REV

R.001

TITLE
PARAMETER LIST AND ERRORS "TOUCHLINE" OVENS, FIRMWARE VERSION 6.21 (USER INTERFACE)

Tipo:		LW 6 1/1		LW 10 1/1		LW 20 1/1		LW 10 2/1		LW 20 2/1		LW 6 2/1		RANGE									
U = User: User modifiable parameters (available in Make-It-Mine)																							
S = Service: Service only parameters																							
RTC = Clock: Real Time Clock parameters (will be unaffected by the parameters default command)																							
Par N°	Name	Type	Description	Unit measure	Default	ELT		GAS		ELT		GAS		ELT		GAS		ELT		GAS		Min	Max
						T	K	T	K	T	K	T	K	T	K	T	K	T	K	T	K		
94	STD L	U	Delayed starting 0 = Enabled 1 = Disabled		1																	0	1
95	PRSA	U	Programs save 0 = Disabled 1 = Enabled		1																	0	1
96	LANG	U	Language 0 = English UK 1 = English US 2 = Italian 3 = German 4 = French 5 = Spanish 6 = Dutch 7 = Belgium Dutch 8 = Belgium French 9 = Swedish 10 = Danish 11 = Portuguese 12 = Greek 13 = Finnish 14 = Norwegian 15 = Russian 16 = Estonian 17 = Hungarian 18 = Turkish 19 = Polish 20 = Slovenian 21 = Croatian 22 = Romanian 23 = Czech 24 = Slovak 25 = Latvian 26 = Lithuanian 27 = Bulgarian 28 = Serbian 29 = Chinese (Simpl) 30 = Chinese (Trad) 31 = Japanese 32 = Korean 33 = Arabic 34 = Hebrew.40 = future use		0																	0	34



Diamond
catering equipment

TITLE

PARAMETER LIST AND ERRORS "TOUCHLINE" OVENS,
SOFTWAREVERSION 6.21 (USER INTERFACE)

MODEL

ONE

NUMBER

411400009

REV

R.001

TITLE
PARAMETER LIST AND ERRORS "TOUCHLINE" OVENS, FIRMWARE VERSION 6.21 (USER INTERFACE)

Tipo:		LW 6 1/1		LW 10 1/1		LW 20 1/1		LW 10 2/1		LW 20 2/1		LW 6 2/1		RANGE									
U = User: User modifiable parameters (available in Make-It-Mine)																							
S = Service: Service only parameters																							
RTC = Clock: Real Time Clock parameters (will be unaffected by the parameters default command)																							
Par N°	Name	Type	Description	Unit measure	Default	ELT		GAS		ELT		GAS		ELT		GAS		ELT		GAS		Min	Max
						T	K	T	K	T	K	T	K	T	K	T	K	T	K	T	K		
97	DATM	S	Data monitor window 0 = Disabled 1 = Enabled		0																	0	1
98	IBAR	U	Info-bar into the manual environment drawer 0 = Disabled 1 = Enabled		1																	0	1
99	GREE	U	Green features (Bit0*1+Bit2*2+Bit3*4) Bit 0 = Skip rinse-aid Bit 1 = Skip drying Bit 2 = Reduce water consumption		0																	0	7
100	DAFT	U	Date format 0 = GG/MM/AAAA 1 = MM/GG/AAAA 2 = AAAA/MM/GG		0																	0	2
101	TIMF	U	Time format 0 = 24H 1 = AM/PM		0																	0	1
102	TOUD	S	Touchpanel Debounce		15																	5	25
103	IMPF	S	Quenching system activation time at startup	100ms	200		0		0		0		0		0		0		0		0	0	255
104	MPRB	S	Minimum duration of probe cooking	sec	60																	0	255
105	DMHU	S	Default duration of manual humidification	sec	30																	10	120
106	STBY	U	Standby Timeout 0 = Disabled	min	30																	0	240
107	SPHF	S	Boiler temperature in proofing mode	°C °F	97 207																	0 32	130 266



TITLE PARAMETER LIST AND ERRORS "TOUCHLINE" OVENS, SOFTWAREVERSION 6.21 (USER INTERFACE)		
MODEL ONE	NUMBER 411400009	REV R.001

TITLE
PARAMETER LIST AND ERRORS "TOUCHLINE" OVENS, FIRMWARE VERSION 6.21 (USER INTERFACE)

Tpo:		LW 6 1/1		LW 10 1/1		LW 20 1/1		LW 10 2/1		LW 20 2/1		LW 6 2/1		RANGE									
U = User: User modifiable parameters (available in Make-It-Mine)																							
S = Service: Service only parameters																							
RTC = Clock: Real Time Clock parameters (will be unaffected by the parameters default command)																							
Par N°	Name	Type	Description	Unit measure	Default	ELT		GAS		ELT		GAS		ELT		GAS		ELT		GAS		Min	Max
						T	K	T	K	T	K	T	K	T	K	T	K	T	K	T	K		
108	FENV	S	Startup environment 0 = Standard 1 = Manual 2 = Automatic 3 = Programs 4 = Cleaning 5 = Settings		0																	0	5
109	MAN	U	Manual environment (user enabling) 0 = Disabled 1 = Enabled		1																	0	1
110	AUTO	U	Automatic environment (user enabling) 0 = Disabled 1 = Enabled		1	0	0	0	0	0	0	0	0	0	0	0	0	0	0	0	0	0	1
111	PROG	U	Programs environment (user enabling) 0 = Disabled 1 = Enabled		1																	0	1
112	CLEA	U	Cleaning environment (user enabling) 0 = Disabled 1 = Enabled		1																	0	1
113	FSC	U	FSC feature 0 = Disabled 1 = Enabled		1	0	0	0	0	0	0	0	0	0	0	0	0	0	0	0	0	0	1



Diamond
catering equipment

TITLE

PARAMETER LIST AND ERRORS "TOUCHLINE" OVENS,
SOFTWAREVERSION 6.21 (USER INTERFACE)

MODEL

ONE

NUMBER

411400009

REV

R.001

TITLE
PARAMETER LIST AND ERRORS "TOUCHLINE" OVENS, FIRMWARE VERSION 6.21 (USER INTERFACE)

TITO:						LW 6 1/1		LW 10 1/1		LW 20 1/1		LW 10 2/1		LW 20 2/1		LW 6 2/1		RANGE							
Par N°	Name	Type	Description	Unit measure	Default	ELT		GAS		ELT		GAS		ELT		GAS		ELT		GAS		Min	Max		
						T	K	T	K	T	K	T	K	T	K	T	K	T	K	T	K	T	K		
114	SECC	U	Cooking duration in seconds 0 = Disabled 1 = Enabled		1																		0	1	
115	ECOD	U	EcoDelta feature 0 = Disabled 1 = Enabled		1																		0	1	
116	ECBU	U	Buzzer volume 0 = Loud 1 = Normal		0																		0	1	
117	EXPR	U	Expert mode: show real temperature/humidity 0 = Disabled 1 = Enabled		0																		0	1	
118	ABRO	S	Long text rolling mode 0 = Disabled 1 = Characters shift 2 = Pixel shift 3 = Frame shift		2																		0	3	
119	NRRO	S	Number of pixel for text rolling		5																		0	10	
120	DTIP	S	Extra duration of Tips	sec	0																		0	250	
121	LC1	S	(Internal use)	sec	300																		10	300	
122	LC2	S	(Internal use)	sec	300																		10	300	



Diamond
catering equipment

TITLE

PARAMETER LIST AND ERRORS "TOUCHLINE" OVENS,
SOFTWAREVERSION 6.21 (USER INTERFACE)

MODEL

ONE

NUMBER

411400009

REV

R.001

TITLE
PARAMETER LIST AND ERRORS "TOUCHLINE" OVENS, FIRMWARE VERSION 6.21 (USER INTERFACE)

TITO:						LW 6 1/1		LW 10 1/1				LW 20 1/1				LW 10 2/1				LW 20 2/1				LW 6 2/1				RANGE	
Par N°	Name	Type	Description	Unit measure	Default	ELT		GAS		ELT		GAS		ELT		GAS		ELT		GAS		ELT		GAS		Min	Max		
						T	K	T	K	T	K	T	K	T	K	T	K	T	K	T	K	T	K	T	K				
123	LC3	S	(Internal use)	min	5																					0	250		
124	LC4	S	(Internal use)	min	5																					0	250		
125	LC5	S	(Internal use)		5																					0	250		
126	LC6	S	(Internal use)		5																					0	250		
127	LC7	S	(Internal use)	min	30																					1	250		
128	LC8	S	(Internal use)	min	30																					1	250		
129	LC9	S	(Internal use)	min	30																					1	250		
130	LC10	S	(Internal use)		-10																					-200	100		
131	LC11	S	(Internal use)		-90																					-200	100		
132	BSND	U	Touchpanel sound 0 = Disabled 1 = Normal 2 = Soft		1																					0	2		
133	CLND	U	Cleaning cycle default 0 = Extra strong 1 = Strong 2 = Medium 3 = Soft		2																					0	3		
134	MLMP	U	Timeout cavity lamp 0=disabled	min	15																					5	255		
135	ZONE	S	(Internal use)		0																					0	0		



TITLE
PARAMETER LIST AND ERRORS "TOUCHLINE" OVENS,
SOFTWAREVERSION 6.21 (USER INTERFACE)

MODEL ONE	NUMBER 411400009	REV R.001
---------------------	----------------------------	---------------------

TITLE
PARAMETER LIST AND ERRORS "TOUCHLINE" OVENS, FIRMWARE VERSION 6.21 (USER INTERFACE)

Tipo:		LW 6 1/1		LW 10 1/1		LW 20 1/1		LW 10 2/1		LW 20 2/1		LW 6 2/1		RANGE									
U = User: User modifiable parameters (available in Make-It-Mine)																							
S = Service: Service only parameters																							
RTC = Clock: Real Time Clock parameters (will be unaffected by the parameters default command)																							
Par N°	Name	Type	Description	Unit measure	Default	ELT		GAS		ELT		GAS		ELT		GAS		ELT		GAS		Min	Max
						T	K	T	K	T	K	T	K	T	K	T	K	T	K	T	K		
136	DSPF	U	Display F in screensaver 0 = Disabled 1 = Enabled		0																	0	1
137	HCTC	U	Hold Convection Default cavity temp	°C °F	70 158																	25 77	250 482
138	HSTC	U	Hold Steam Default cavity temp	°C °F	70 158																	25 77	100 212
139	HDTP	U	Default delta probe temperature in Hold	°C °F	5 9																	0 0	100 180
140	FFSC	U	Force FSC risk set on start button 0 = Disabled 1 = Enabled		0																	0	1
141	MTMR	U	MultiTimer cooking 0 = Disabled 1 = Enabled		1																	0	1
142	FDES	S	Forced rinse after descaling pending (internal use) 0 = Disabled 1 = Enabled		0																	0	1
143	UPRB	S	USB core probe detection 0 = Disabled 1 = Enabled		1																	0	1
144	ABOF	S	Min OFF time for quenching system	sec	10																	0	255



Diamond
catering equipment

TITLE

PARAMETER LIST AND ERRORS "TOUCHLINE" OVENS,
SOFTWAREVERSION 6.21 (USER INTERFACE)

MODEL

ONE

NUMBER

411400009

REV

R.001

TITLE

PARAMETER LIST AND ERRORS "TOUCHLINE" OVENS, FIRMWARE VERSION 6.21 (USER INTERFACE)

Tipo:						LW 6 1/1		LW 10 1/1		LW 20 1/1		LW 10 2/1		LW 20 2/1		LW 6 2/1		RANGE					
U = User: User modifiable parameters (available in Make-It-Mine)																							
S = Service: Service only parameters																							
RTC = Clock: Real Time Clock parameters (will be unaffected by the parameters default command)																							
Par N°	Name	Type	Description	Unit measure	Default	ELT		GAS		ELT		GAS		ELT		GAS		ELT		GAS		Min	Max
						T	K	T	K	T	K	T	K	T	K	T	K	T	K	T	K		
145	ABON	S	Min ON time for quenching system	sec	5																	0	255
146	MMAN	S	Manual environment (main enabling) 0 = Disabled 1 = Enabled		1																	0	1
147	MAUT	S	Automatic environment (main enabling) 0 = Disabled 1 = Enabled		1		0		0		0		0		0		0		0		0	0	1
148	MPRG	S	Programs environment (main enabling) 0 = Disabled 1 = Enabled		1																	0	1
149	MCLN	S	Cleaning environment (main enabling) 0 = Disabled 1 = Enabled		1																	0	1
150	SKPR	U	Skip preheat button when programs are not modifiable 0 = Disabled 1 = Enabled		1																	0	1
151	HDON	S	Max ON time for boiler heaters 0 = no max limit	min	0												5					0	255
152	HDOF	S	Min OFF time for boiler heaters	sec	60												20					10	255
153	MCRT	U	Multitimer: temperature restoring after door opening. 0= disabled; 1 = enabled		0																	0	1
154	MTPL	U	Multitimer: preset loading enable during a cooking program upload. 0= disabled ; 1= enabled		1																	0	1



TITLE PARAMETER LIST AND ERRORS "TOUCHLINE" OVENS, SOFTWAREVERSION 6.21 (USER INTERFACE)		
MODEL ONE	NUMBER 411400009	REV R.001

TITLE
PARAMETER LIST AND ERRORS "TOUCHLINE" OVENS, FIRMWARE VERSION 6.21 (USER INTERFACE)

Tito: U = User: User modifiable parameters (available in Make-It-Mine) S = Service: Service only parameters RTC = Clock: Real Time Clock parameters (will be unaffected by the parameters default command)						LW 6 1/1		LW 10 1/1				LW 20 1/1				LW 10 2/1				LW 20 2/1				LW 6 2/1				RANGE	
Par N°	Name	Type	Description	Unit measure	Default	ELT		GAS		ELT		GAS		ELT		GAS		ELT		GAS		ELT		GAS		Min	Max		
						T	K	T	K	T	K	T	K	T	K	T	K	T	K	T	K	T	K	T	K				
155	MCDM	S	Multitimer: max duration of temperature restoring	sec	300																					0	28800		
156	PRMT	U	Multitimer: multitimer program environment enabling. 0= disabled; 1= enabled		1																					0	1		
157	NMMT	U	Multitimer : temporary modify enabling on cooking programs. 0=enabled; 1=disabled		0																					0	1		
158	SPMT	U	Multitimer: program save enabling. 0=disabled; 1=enabled		1																					0	1		
159	DPMT	U	Multitimer: program erase enabling. 0=disabled ; 1=enabled		1																					0	1		
160	NMPR	U	Multitimer: temporary preset modify enabling. 0=enabled;1=disabled		0																					0	1		
161	SPPR	U	Multitimer: preset saving enable. 0=disabled; 1= enabled		1																					0	1		
162	DPPR	U	Multitimer: preset erasing enable. 0=disabled;1=enabled		1																					0	1		
163	MPMT	S	Multitimer: Program environment enabling (main enabling). 0=disabled; 1= enabled		1																					0	1		
164	IXLV	S	Boiler water level sensors. Sensibility index. 0= Custom; 1=standard; 2...5=reduced sensibility	19,61 mV	1																					0	5		
165	LVLL	S	Boiler water level sensors: lower threshold		51																					0	255		
166	LVLH	S	Boiler water level sensors:higher threshold		102																					0	255		



TITLE PARAMETER LIST AND ERRORS "TOUCHLINE" OVENS, SOFTWAREVERSION 6.21 (USER INTERFACE)		
MODEL ONE	NUMBER 411400009	REV R.001

TITLE
PARAMETER LIST AND ERRORS "TOUCHLINE" OVENS, FIRMWARE VERSION 6.21 (USER INTERFACE)

Tito: U = User: User modifiable parameters (available in Make-It-Mine) S = Service: Service only parameters RTC = Clock: Real Time Clock parameters (will be unaffected by the parameters default command)						LW 6 1/1		LW 10 1/1		LW 20 1/1		LW 10 2/1		LW 20 2/1		LW 6 2/1		RANGE					
Par N°	Name	Type	Description	Unit measure	Default	ELT		GAS		ELT		GAS		ELT		GAS		ELT		GAS		Min	Max
						T	K	T	K	T	K	T	K	T	K	T	K	T	K	T	K		
167	MTAV	U	Multitimer: advanced functions enabling (programs, preset). 0= disabled;1=enabled		1																	0	1
168	MSKP	U	Multitimer: preheating skip enabling when program modify is enabled (parameter NMMT). 0=disabled; 1= enabled		1																	0	1
169	MMT	S	Multitimer cooking enabling. (main enagling). 0= disabled; 1= enabled		1																	0	1
170	CLVI	S	Extra strong cleaning cycle counter		0																	0	32000
171	CLI	S	Strong cleaning cycle counter		0																	0	32000
172	CLM	S	Medium cleaning cycle counter		0																	0	32000
173	CLS	S	Soft cleaning cycle counter		0																	0	32000
174	QHBL	S	Steam generator (boiler tank) hour counter (steam+combi)	h/4	0																	0	32000
175	MHTS	S	Prewarning time of electronic component overheating and consequently automatic appliance switch off	min	30																	0	58
176	APMF	S	Automatic mode: Preset management (general enabling) 0= Disable; 1= Enable		1																	0	1
177	APD	U	Automatic Mode: Preset deleting. 0= Disable; 1 = Enable		1																	0	1
178	APDF	U	Automatic mode: factory preset deleting. 0= Disable; 1= Enable		1																	0	1



TITLE PARAMETER LIST AND ERRORS "TOUCHLINE" OVENS, SOFTWAREVERSION 6.21 (USER INTERFACE)		
MODEL ONE	NUMBER 411400009	REV R.001

TITLE
PARAMETER LIST AND ERRORS "TOUCHLINE" OVENS, FIRMWARE VERSION 6.21 (USER INTERFACE)

Tito: U = User: User modifiable parameters (available in Make-It-Mine) S = Service: Service only parameters RTC = Clock: Real Time Clock parameters (will be unaffected by the parameters default command)						LW 6 1/1				LW 10 1/1				LW 20 1/1				LW 10 2/1				LW 20 2/1				LW 6 2/1				RANGE	
Par N°	Name	Type	Description	Unit measure	Default	ELT		GAS		ELT		GAS		ELT		GAS		ELT		GAS		ELT		GAS		Min	Max				
						T	K	T	K	T	K	T	K	T	K	T	K	T	K	T	K	T	K	T	K			T	K		
179	APS	U	Automatic mode: Preset saving. 0=Disable; 1= Enable		1																					0	1				
180	APOF	U	Automatic mode: Factory preset Overwrite 0=Disable; 1= Enable		1																					0	1				
181	UAP	U	Automatic mode: Preset loading from USB(upload). 0=Disable; 1= Enable		1																					0	1				
182	UAPF	U	Automatic mode: Factory preset loading (upload). 0=Disable; 1= Enable		1																					0	1				
183	DAP	U	Automatic mode: Preset saving on USB (download). 0=Disable; 1= Enable		1																					0	1				
184	DAPF	U	Automatic Mode: Factory preset saving on USB (Download). 0= Disable; 1= Enable		1																					0	1				
185	APC	U	Automatic Mode: Preset modify. 0= Disable;		1																					0	1				
186	APCF	U	Automatic mode: Factory preset modify. 0=Disable; 1= enable		1																					0	1				
187	APSF	U	Automatic mode: Factory preset saving. 0=Disable; 1= enable		1																					0	1				
188	AMTF	S	Automatic mode: Multitimer cooking enabling (general enabling). 0= Disable; 1= enable		1																					0	1				



Diamond
catering equipment

TITLE

PARAMETER LIST AND ERRORS "TOUCHLINE" OVENS,
SOFTWAREVERSION 6.21 (USER INTERFACE)

MODEL

ONE

NUMBER

411400009

REV

R.001

TITLE

PARAMETER LIST AND ERRORS "TOUCHLINE" OVENS, FIRMWARE VERSION 6.21 (USER INTERFACE)

TITO:		U = User:		User modifiable parameters (available in Make-It-Mine)		LW 6 1/1		LW 10 1/1		LW 20 1/1		LW 10 2/1		LW 20 2/1		LW 6 2/1		RANGE					
S = Service:		Service only parameters		RTC = Clock:		Real Time Clock parameters (will be unaffected by the parameters default command)		ELT		GAS		ELT		GAS		ELT		GAS		Min	Max		
Par N°	Name	Type	Description	Unit measure	Default	T	K	T	K	T	K	T	K	T	K	T	K	T	K	T	K		
189	AMT	U	Automatic mode: Multitimer cooking enabling . 0= Disable; 1= enable		1																0	1	
190	FAPM	S	Program mode: advance functions management enabling (general enabling). 0= disable; 1= enable		1																	0	1
191	ADPM	U	Program mode: advance functions management enabling (Categories and Recent) 0= disable; 1= enable		1																	0	1
192	MFEN	S	Error "EACF" management enabling. Voltage lost on auxiliary circuit. 0= disable; 1= enable		0																	0	1
193	FCDC	S	USB communication enabling (general enabling). 0= disable; 1= enable		0																	0	1
194	CDC	U	USB communication enabling (temporary enabling) 0= disable; 1= enable		0																	0	1
195	UUFW	S	Software update enabling from settings environment. 0= disable; 1= enable		0																	0	1
196	ADSB	S	SD functionality check enabling. 0= disable; 1= enabling		0																	0	1
197	MPRS	U	Automatic mode: Preset management 0= Disable; 1= Enable		1																	0	1



TITLE PARAMETER LIST AND ERRORS "TOUCHLINE" OVENS, SOFTWAREVERSION 6.21 (USER INTERFACE)		
MODEL ONE	NUMBER 411400009	REV R.001

TITLE
PARAMETER LIST AND ERRORS "TOUCHLINE" OVENS, FIRMWARE VERSION 6.21 (USER INTERFACE)

Tpo:		LW 6 1/1		LW 10 1/1		LW 20 1/1		LW 10 2/1		LW 20 2/1		LW 6 2/1		RANGE									
U = User: User modifiable parameters (available in Make-It-Mine)																							
S = Service: Service only parameters																							
RTC = Clock: Real Time Clock parameters (will be unaffected by the parameters default command)																							
Par N°	Name	Type	Description	Unit measure	Default	ELT		GAS		ELT		GAS		ELT		GAS		ELT		GAS		Min	Max
						T	K	T	K	T	K	T	K	T	K	T	K	T	K	T	K		
198	FEXF	S	Extend calculation for pastozization factor F (General enable) 0= Disable 1= Enable		1																	0	1
199	EXF	U	Extend calculation for pastozization factor F 0= Disable 1= Enable		0																	0	1
200	FHF	S	F insertion in the HACCP log (General enable) 0=Disable 1= Enable		1																	0	1
201	HF	U	F insertion in the HACCP log 0=Disable 1= Enable		0																	0	1
202	PDTC	U	Min temperature difference between cavity set and meat probe set	°C °F	5 9																	0 0	10 18
203	BZET	S	End cooking buzzer type		0																	0	4
204	ASPB	U	Meat probe temperature visualization with time mode cooking type		0																	0	1
205	ASCD	s	(internal use)		0																	0	0
206	DAPH	U/S	Ordinary maintenance reminder for water threatment	days	0																	0	1000
207	THPT	S	(internal use)		0																	0	32000
208	DOPH	S	Counter for how many times it has been answered "DONE" to the previous reminder		0																	0	32000



Diamond
catering equipment

TITLE
PARAMETER LIST AND ERRORS "TOUCHLINE" OVENS,
SOFTWAREVERSION 6.21 (USER INTERFACE)

MODEL ONE	NUMBER 411400009	REV R.001
---------------------	----------------------------	---------------------

TITLE
PARAMETER LIST AND ERRORS "TOUCHLINE" OVENS, FIRMWARE VERSION 6.21 (USER INTERFACE)

Tipo:		LW 6 1/1		LW 10 1/1		LW 20 1/1		LW 10 2/1		LW 20 2/1		LW 6 2/1		RANGE										
U = User: User modifiable parameters (available in Make-It-Mine)																								
S = Service: Service only parameters																								
RTC = Clock: Real Time Clock parameters (will be unaffected by the parameters default command)																								
Par N°	Name	Type	Description	Unit measure	Default	ELT		GAS		ELT		GAS		ELT		GAS		ELT		GAS		Min	Max	
						T	K	T	K	T	K	T	K	T	K	T	K	T	K	T	K			
209	LAPH	S	Counter for how many times it has been answered "REMIND ME LATER" to the previous reminder		0																	0	32000	
210	MFCL	S	(internal use)	min	0																	0	32000	
211	FIWZ	S	Guided procedure for installation verify 0=Disable 1=Enable		0	1	1	1	1	1	1	1	1	1	1	1	1	1	1	1	1	1	0	1
212	WTMB	U	Reminder for water treatment system ordinary maintenance. Max number of times it is possible to answer "REMIND ME LATER" 0= no postpone admitted		255																	0	255	
213	WTMP	U	Reminder for water treatment system ordinary maintenance. Need of store password to set to zero (DONE button). 0 = Disabled; 1 = Enabled.		0																	0	1	
214	WTMC	S	Reminder for water treatment system ordinary maintenance: postponing counter		0																	0	255	



Diamond
catering equipment

TITLE

PARAMETER LIST AND ERRORS "TOUCHLINE" OVENS,
SOFTWAREVERSION 6.20 (USER INTERFACE)

MODEL

ONE

NUMBER

411400009

REV

R.00

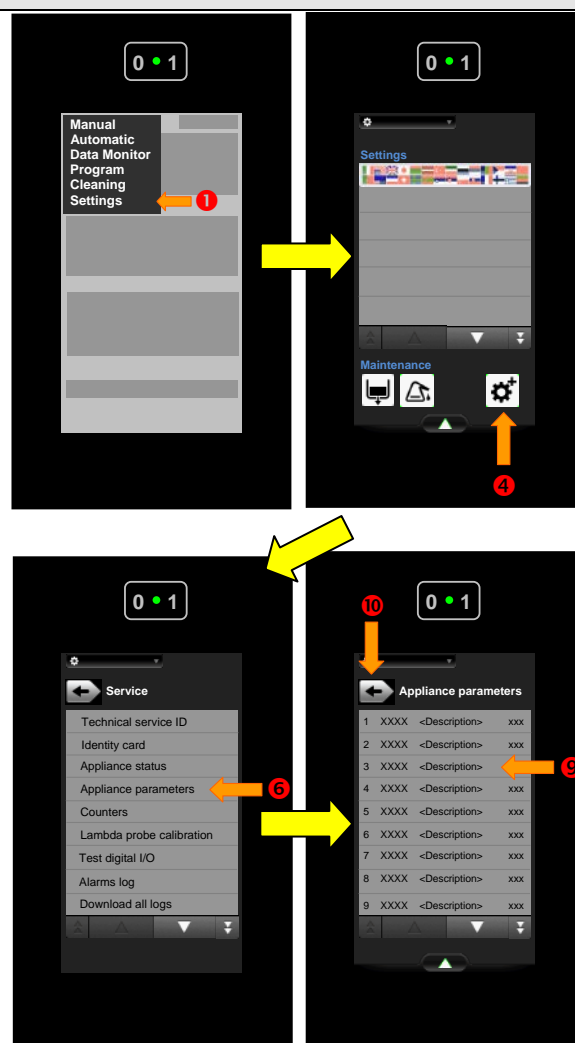
NOTE

NOTE N1	Set Fahrenheit (if requested)
NOTE N2	Set altitude above sea level before calibrating the 100°C steam temperature offset.
NOTE N3	Settings are for standard cylindrical micro-perforated metal burners.
NOTE N4	Set 90°C for "UK" models.
NOTE N5	Set 10 for "UK" models.
NOTE N6	Set to 2 (Force half) for "USA GAS 120V" models.
NOTE N7	Set to 20 for "USA GAS 120V" models.
NOTE N8	Set to 20 for "JAPAN GAS 100V" models.
NOTE N9	Set to 1 (Force full) for "USA ELT 208V, 240V and 480V" models.
NOTE N10	Set to 1 (Force full) for "USA GAS 120V" models.
NOTE N12	Set to 2 if the multipoint probe is present (USA lev. K)
NOTE N13	Set the value in brackets for models with additional cleaning system in the cavity fan area

PARAMETERS PROGRAMMING

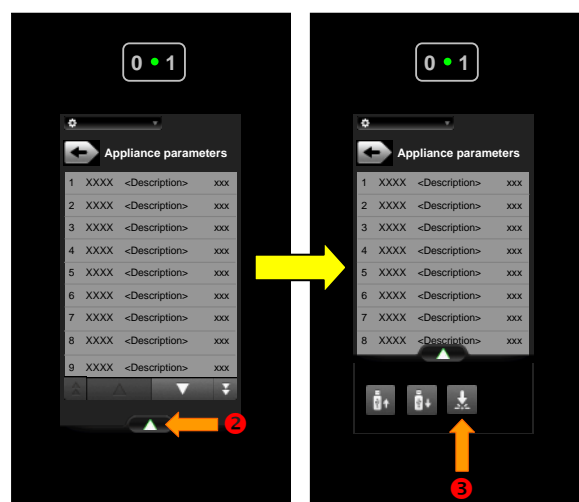
ENTER IN PARAMETERS PROGRAMMING OF THE UNIT

- 1: Press the top button on the left that shows the current working environment.
- 2: It will be shown a drop down menu with the list of available work environments .
- 3: Press the "Settings"
- 4: Press the down button to the right " technical assistance . "
- 5: Enter the Service Password 1-1-2-3-5-8-1-3 and confirm with the " OK " button.
- 6: Select the item "Appliance parameters".
- 7: You will see the list of machine parameters including location , unique four-digit identification code , description (translated in all languages) and current value .
- 8: Scroll to the desired parameter.
- 9: To change the value of a parameter press the corresponding row. It will be shown a pop-up setting . Set the new value . Press " OK " to store the new value , " CANCEL " to return without saving.
- 10: To exit the parameter programming page, press the button⊖.



DEFAULT PARAMETERS PROGRAMMING

- 1: Enter in the Machine Parameters page .
- 2: Press the up arrow at the bottom center to display the drawer .
- 3: Press the button " Default parameters " ③.
- 4: A confirmation popup appears.
Press " YES " to load the default parameters ,
" NO " to cancel the operation .



WARNINGS

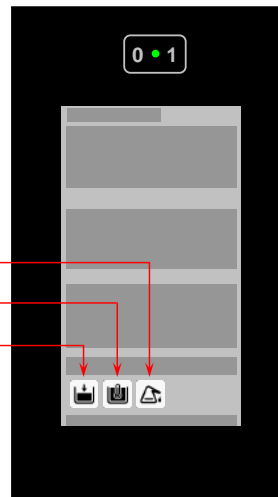
WARNINGS WITH IMMEDIATE VISIBILITY

The warning icon appears and disappears automatically to the appearance / disappearance of the reported situation.

BOILER DESCALING PROCEDURE

BOILER PREHEATING RUNNING

LACK OF WATER IN THE BOILER

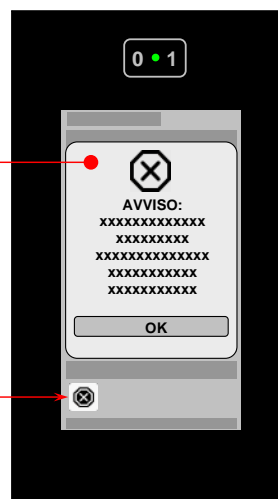


POP-UP WARNINGS

The warning popup appears automatically to the appearance of the situation reported and remains on the screen until you press the "OK" button.

POPUP

WARNING/ERROR PRESENCE



WARNING CODE	MEANING
EH2O	Insufficient water pressure for automatic washing system . Check the water supply . The oven will continue to clean. Check the final cleaning result.
EFLP	Problem to the vent valve . The oven will continue to work anyway. Check the cooking results .
ELMB	Detected a problem with the oxygen sensor . The oven will continue to work anyway. Check the cooking results .
UPRB	The optional USB food probe was disconnected . Cooking continues indefinitely . Reconnect the device to restore cooking with USB food probe.

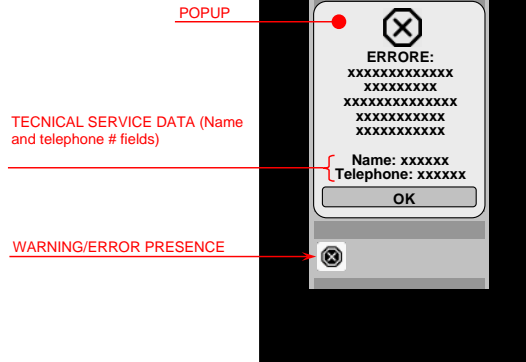


ERROR LIST

The errors relate to reports of serious malfunction of the machine.

The oven stops the execution of the ongoing cycles .
The error associated functions of the machine detected are no longer available .

The error popup automatically appears to the appearance of the situation reported and remains on the screen until you press the " OK" button.



ERROR CODE	MEANING
ETUC	Cavity overtemperature Cool down the cavity before cooking .
ETUB	Boiler overtemperature. Cool the boiler before cooking
ESCH	Main power board over temperature. Check the cooling fan and the air circulation (example the bottom part of the control panel).
ECEL	Cavity probe interrupted (it's possible to use the oven only with steam cycle - 100°C)
EBOL	Boiler probe interrupted (it's possible to use the oven only with convection cycle)
EBYP	Bypass probe interrupted .The oven will continue to work. The quenching system has malfunction and uncertain water spray
ENTC	NTC probe interrupted. Power board temperature sensor (on board). Replace the power board
EAD1 .. EAD5(ECAD)	Analogic / Digital converter locked. Check input signal of all temperature probes, food probe, lambda sensor. Verify the oven is correctly set as level Touch or level K by the related parameter APPL. Replace power board if the problem persist.
EPRB	Meat probe interrupted (it's possible to use only with cooking cycle with time set)
ERTC	No communication with the internal clock.
ERAM	Communication error with RAM
EPWM	Communication error with the PWM system. Burner fan speed control. Replace power board.
ETC	Cavity safety thermostat trips. Overtemperature in the cavity (340°C/644°F). Reset the thermostat by pushing the red button on it.

ERROR LIST (continues...)

ERROR CODE	MEANING
ETB	Boiler safety thermostat trips. Overtemperature in the boiler (140°C/284°F). Reset the thermostat by pushing the red button on it.

