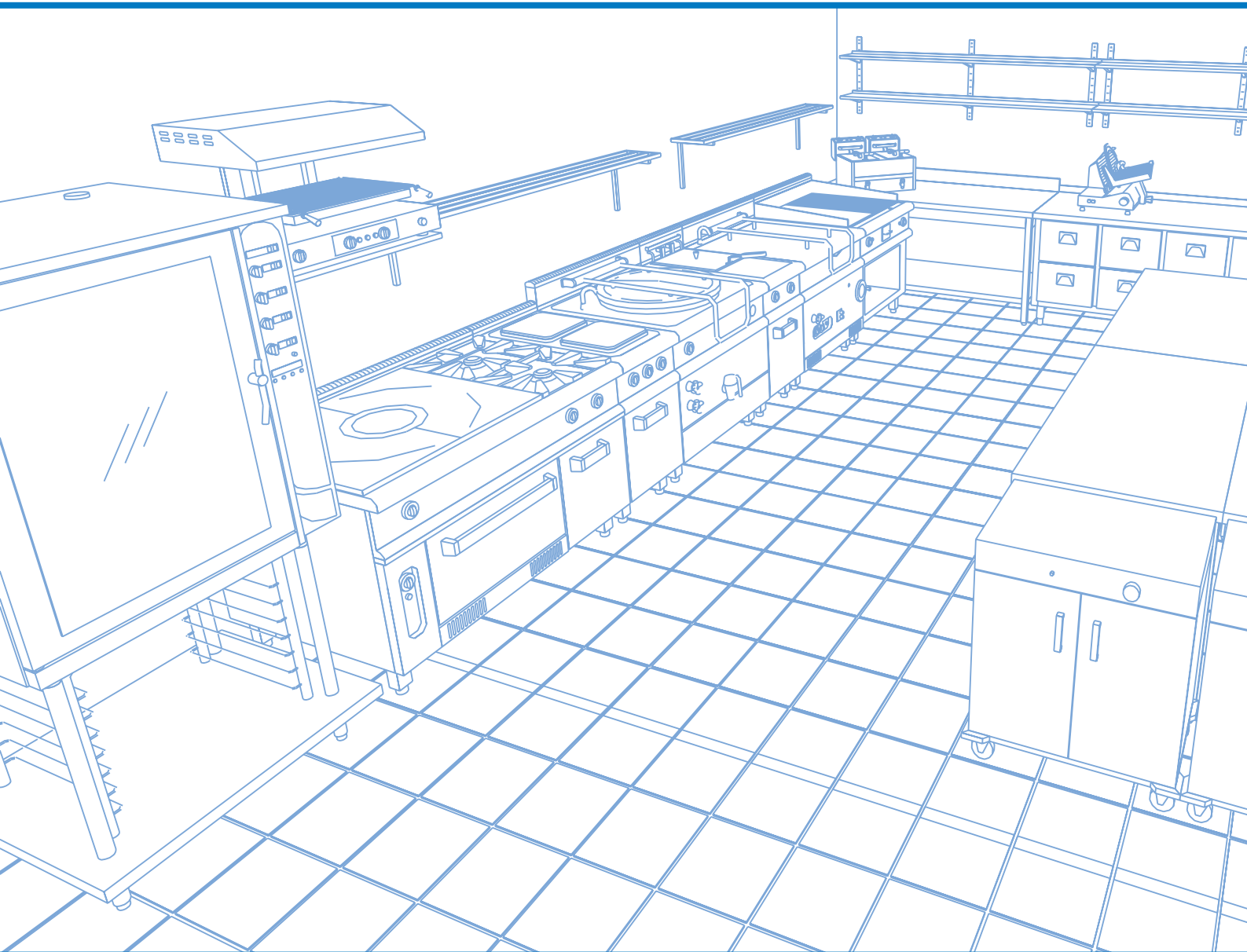


Mod: VB/2C

Production code: 9070



STAINLESS STEEL HOT SHELVES WITH SEMI-CYLINDRICAL DOME

Art. 9070



OWNER'S MANUAL

PRESENTATION

Thank you for buying our product. This article has been constructed in conformity with the more restrictive rules and it follows technical standards that warrant a practical and safe use of it in professional work places.

SECURITY DIRECTIONS

Read carefully the directions of the present WORK AND MAINTENANCE BOOK because you will find important indications regarding safe installation, use and maintenance of the equipment.

Keep this book for any further operator's consultation. The workbook must be kept all through equipment's life and must be at users' disposal for consultation. It is necessary to consult it for any information about installation, use and maintenance of the equipment.

After taking off the packaging, make sure the equipment is intact.

Don't leave the elements composing the packaging (plastic bags, polystyrene, carton board, etc.) at children's reach, because they can be dangerous. They must be collected and recycled under the normative law in force.

Before connecting the equipment make sure that electric distribution data of the place where the equipment is positioned are the same of the ones indicated on the equipment plate.

The equipment must be subjected to periodical safety inspections.

The equipment must be connected to an efficient earthing current-tap. Maintenance must be done by technical engineer staff. Do not work with electrical parts before disconnecting the equipment from electrical net.

Do not spill liquids over the external surface, especially on the control panel. Do not use the equipment if you have wet hands or naked feet on wet floor.

Do not use the equipment if the feeding cable is damaged. Do not extract feeding plug pulling the cable. Do not use acid or aggressive chemical substances to clean the article.

TECHNICAL DATA

- AISI 304 18/10 stainless steel sheet structure.
- Electric heating by wire resistance.
- Net tension 230 Volt monophas-50/60Hz.
- Adjustable thermostatic control 30÷90°.
- Two sides opening Plexiglas dome.
- Rubber feet.

Article	Width cm.	Depth cm.	Height cm.	Weight Kg.	W	Electrical Voltage V ac	Hz	Temperature interval °C
9070	92	52	33	23	450	230	50-60	30÷90

COMMANDS IDENTIFICATION (See table "2")

SCHEMATIC DIAGRAM AND CONNECTIONS (See table "3")

USE

Switch on. Use the special thermostat to set the temperature. The pilot-light will first switch on and then switch off after reaching the planned temperature. These sequence will start again every time the temperature is changing of $\pm 5^{\circ}\text{C}$ ca. from the setted value. At the end of work, switch off the equipment turning thermostat to "0", disconnect feeding cable and clean the equipment

STAINLESS STEEL CLEANING

For the cleaning of the stainless steel use a soft cloth and neutral soap. Do not use in any case cleaning products that can corrode or eat the steel like chlorine, bleach, etc... Avoid absolutely to clean the steel with steel wool, steel brush or steel scraper. Do not clean the equipment with water jet.

When you are doing the cleaning close to the equipment pay attention to the splashes; in case of need clean the equipment with water paying attention not to splash electrical components.

To remove possible harden residual food products use a wood or plastic brush and complete the cleaning with a humid soft cloth.

FINDING THE RATINGS (See table "1")

Registration data are indicated on the special plate placed in the lower part of the trolley, in correspondence with the control panel. The label that indicates the earthing knot is placed inside the trolley, close to the feeding cable entry.

DISCHARGE OF THE EQUIPMENT

Once the equipment is no more usable, it must be discharge in conformity with the laws in force.

The equipment must be handed to authorized staff for the salvage and discharge of equipment's parts.

FIGURA 1

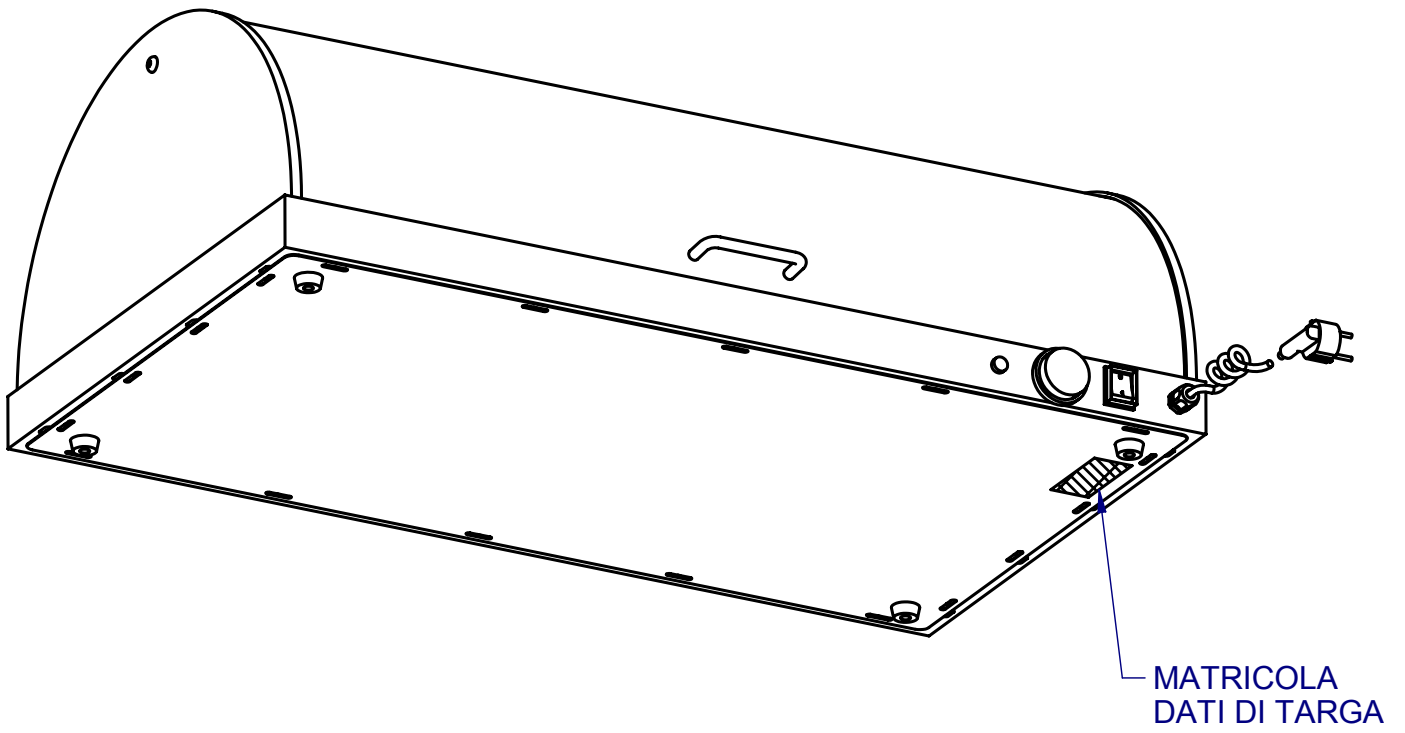
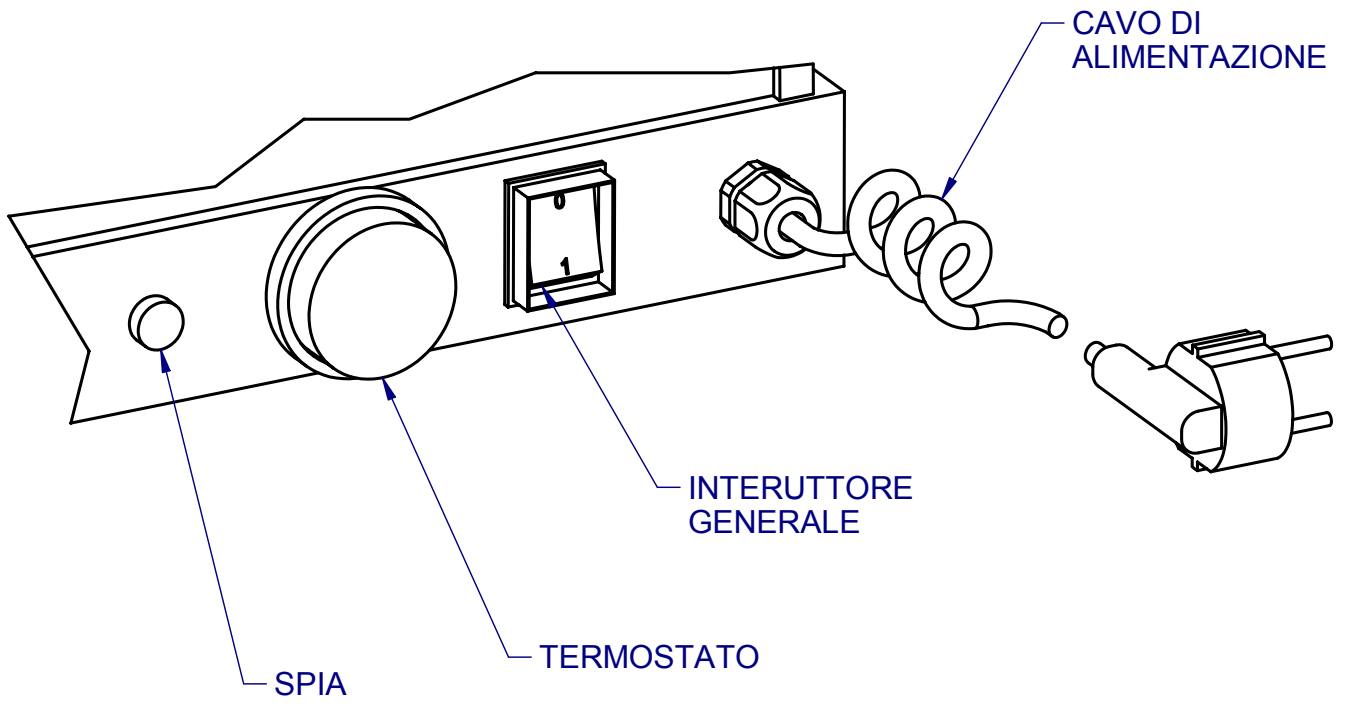
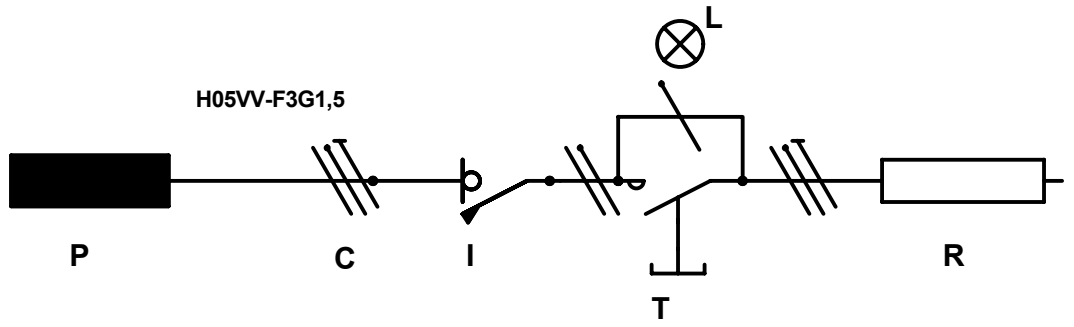


FIGURA 2



SCHEMA UNIFILARE

PRESA UNEL P30
2P+T Un=230V 50Hz
In=16A



MANUALE RICAMBI PER: 9070

DESCRIZIONE: PIANO CALDO 920X520X55 450W CON CUPOLA SEMICILINDRICA

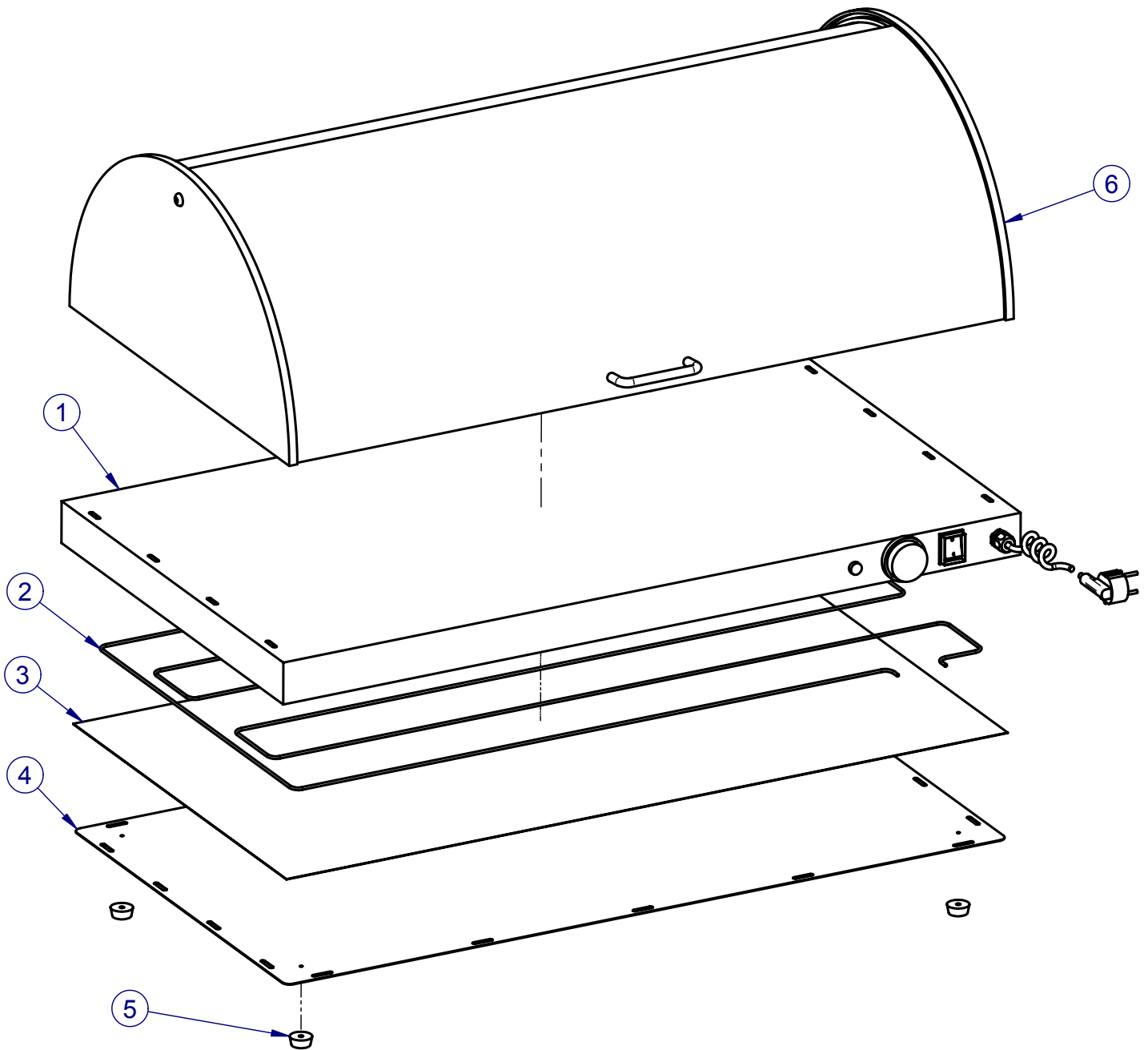
DATA ULTIMA REVISIONE:
04/07/2005

OPZIONALE:

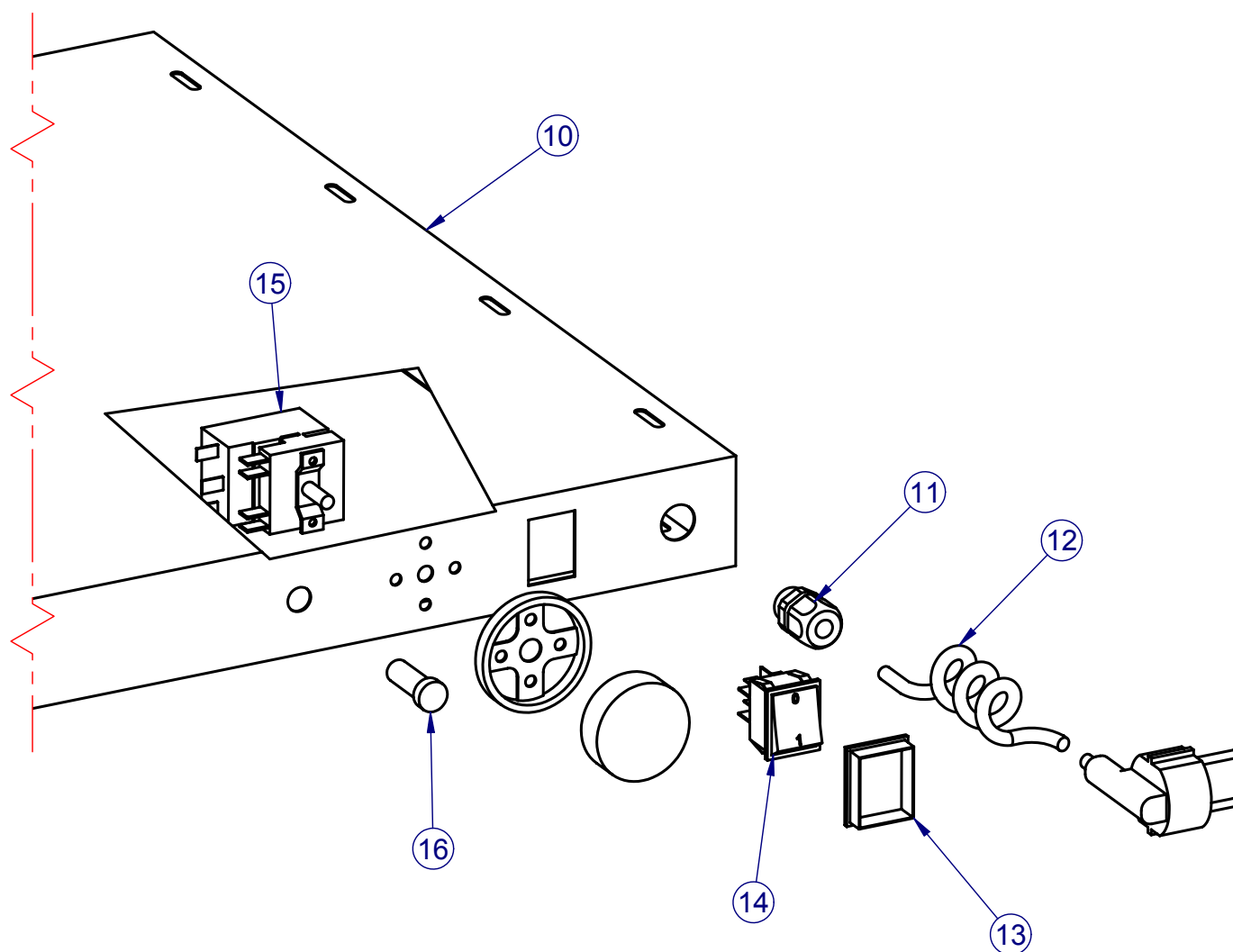
FILE: 509070000002_RICAMBI.dft

RELISE:

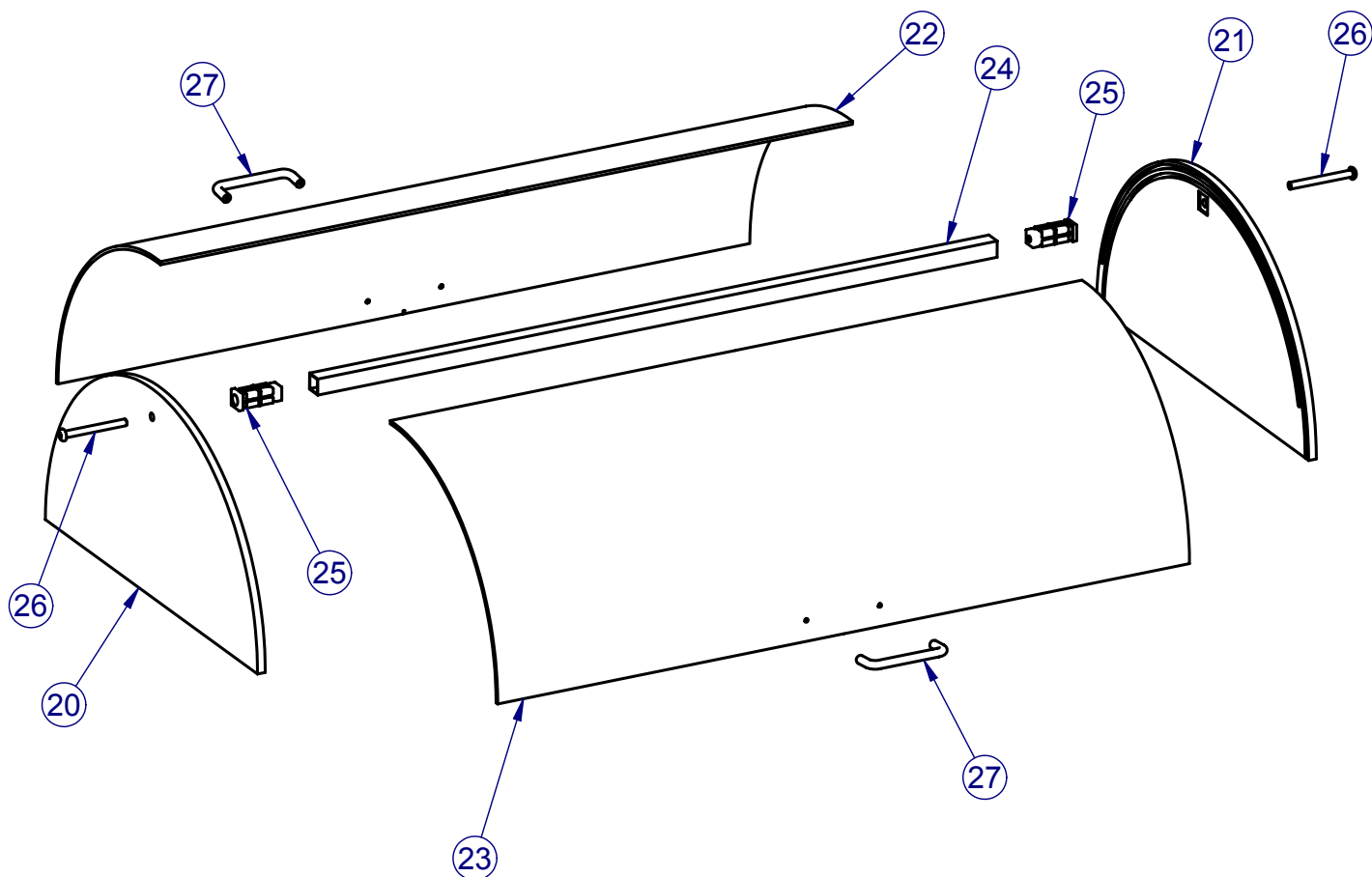
02



N°	Codice	Descrizione	Q.ta
1	431700120009	BASE COMPLETA DI COMANDI PER PIANO CALDO 9070	1
2	003001040014	RESISTENZA A SECCO 240V 600W FILO, FORN. HOFFMANN (COD.10MT)	1
3	231705400005	PELLICOLA COPRI RESISTENZA PER 9051 ALLUMINIO	1
4	231701800005	PROTEZIONE INFERIORE PER PIANO CALDO 9051 FERRO ELETTOZINCATO	1
5	001804340001	PIEDINI FISSI Ø=15 H=10 NERO	4
6	433004200002	CUPOLA COMPLETA TIPO SEMISFERICA 904X515 H=258	1



N°	Codice	Descrizione	Q.ta
10	231700120017	BASE PER PIANO CALDO 9070 CON INTERUTTORE ACCIAIO INOX SB	1
11	003352420001	PRESSACAVO PG9 A TENUTA STAGNA GRIGIO IP 68	1
12	003553280001	CAVO SPIRALATO 3 POLI S=1,5 CON SPINA SCHUKO NERO	1
13	003252060002	PROTEZIONE PRARASPUZZI PER INTERUTTORE A BILANCERE	1
14	003252060001	INTERUTTORE BASCULANTE DA PANNELLO CON SPIA VERDE BIPOLARE 16A 250VAC	1
15	003201820001	TERMOSTATO ANALOGICO 220V TEMPERATURA DA 30 A 120	1
16	003302260001	SPIA ROSSA 220 VOLT	1



N°	Codice	Descrizione	Q.ta
20	233004200004	FIANCO D=515 SX, PLESSIGLAX, SP.10 mm	1
21	233004200001	FIANCO D=515 DX, PLESSIGLAX, SP.10 mm	1
22	233004200006	BASCULA POSTERIORE D=515 L=894 PLESSIGLAX, SP.4 mm	1
23	233004200005	BASCULA ANTERIORE D=515 L=894 PLESSIGLAX, SP.4 mm	1
24	233002880007	TRAVERSO TUBO 20X20 L=878 ACCIAIO INOX, SP.1 mm	1
25	433004560001	GIUNTO A ESPANSIONE PER TUBO 20X20	2
26	001001210001	VITE TBEI, M8X 80 TF A2 ISO 7380	2
27	001400010001	MANIGLIA IN PLASTICA, NERO, INTERASSE FORATURA 95 mm, D=3.2	2

CE CONFORMITY DECLARATION

Name: **Stainless steel hot shelves with semi-cylindrical dome**

Model: **9070**

is in conformity with safety requisites and with the law Directives which are enforceable to it:

- a) 73/23/CEE Low Tension Directive and its further modifications (Directive 93/68 CEE)
- b) 89/336/CEE Electromagnetical Directive and its further modifications (Directive 93/68 CEE)
- c) 89/109/CEE Directive for materials and objects destined to be in contact with products


Harmonized rules used for answering to safety and health requiremetns.

CEI EN 60335-1 Safety of electrical equipments for domestic or similar use – Part I General rules
 EN 50081-1, 50082-1 Electromagnetical compatibility

Bellaria Igea Marina,

Franco Picchi

.....

<div style="border: 1px solid black; width: 100%; height: 100%; display: flex; align-items: center; justify-content: center;">  </div>	_____		CE
Warranty Certificate	Model: 9070		
Reseller stamp for confirmation	Year of construction:	2005	
	Matriculation number:		
	230Vac 50~60Hz 450 W		
Purchase date:	The manufacturer warrants for 2 (two) years its own products. Warranty does not include electrical parts and consumption materials. Warranty interventions will be effected just at manufacturer's place. Transport and return of manufactured articles will be made at customer's expense. This certificate must not be sent for confirmation. It is valid and operating just if it's kept together with fiscal receipt or another binding document.		