

01/2013

Mod: KLD9-18/35AS-N

Production code: P13PY06004



Diamond
catering equipment

INSTRUCTION MANUAL



LOGIC LINE PLUS HOOD KLD4/35AS-N ÷ KLD6/35AS-N KLD6/35XLAS-N ÷ KLD9/35AS-N



Reseller Stamp for
Warranty



DECLARATION OF CONFORMITY

In agreement with the Low Voltage Directive **2006/95 EEC**, with the directive **2004/108 EEC** (EMC9), with the directive **2006/42 EEC** (machines), integrated by the CE mark.

In agreement with Regulation (EC) No. **1935/2004** of the European Parliament and of the Council of **27 October 2004** on materials and articles intended to come into contact with food.

Type of appliance / Machine	HOOD
Trademark	DIAMOND
Model	LOGIC PLUS LINE
Manufacturer	PIZZA GROUP SRL
Address	
Telephone	
Telefax	

The harmonised standards or technical specifications (designations) that have been applied in agreement with the highest professional standards on safety in force in the EEC are:

Standards or other normative documents

EN 60335-1 EN 60335-2-64

EN 55014

Test report - Technical data sheets

IMQ PRIMA CONTROL 58 CEEL 99

FLAM GAS

Other information:

In my capacity as manufacturer and/or authorised representative of the company inside the EEC, I hereby declare, under my own responsibility that the appliances conform to the essential requirements of the aforementioned Directives.

San Vito al Tagliamento (PN)

03.04.2006

Bellotto Carlo

President



Dear customer,

Above all, thank you for choosing our product and we would like to congratulate you on your selection.

In order to better use your new oven, please carefully read the information contained in this manual.

1 INTRODUCTION

The manufacturer reserves the right to change technical features and/or functions of the product at any time without notice.

1.1 SYMBOLS

In this manual, important information is pointed out using the following symbols:



INSTRUCTION: Instructions concerning the correct use of the hood and those responsible for using the machine.



WARNING: Signifies a particularly important point.



DANGER: Signifies important information about practices for preventing accidents or material damage.

1.2 INTENDED USE

The hoods were designed and constructed exclusively for the aspiration of the vapours produced when cooking pizzas and similar products .

The intended use described above and the machine configurations are the only uses authorized by the Manufacturer: **do not use the hood in any way that does not adhere to the provided instructions.**



The intended use is considered valid only for equipment in good structural, mechanical and construction condition.

The User and Maintenance Manual is an integral part of the machine.

1.3 GENERAL INFORMATION

Liability:

With delivery of this manual, the Manufacturer declines any and all liability, both civil and criminal, for accidents deriving from partial or total non-adherence to the specifications contained herein.

The Manufacturer also declines all liability for improper or incorrect use of the equipment, for unauthorized modifications and/or repairs, as well as for use of non-original or spare parts not appropriate for these models.

Installation and extraordinary maintenance:

Installation and extraordinary maintenance operations must be performed by qualified personnel trained to work on the equipment referred to in this manual.

DANGER



Be careful that children do not play with the packaging materials (for example, plastic film and polystyrene). Suffocation danger!

1.4 RELEVANT SAFETY AND ACCIDENT PREVENTION RULES AND DIRECTIVES

- Directive 2006/95/EC "Concerning harmonization of legislation of the member States in relation to electrical materials destined for use within certain voltage limits".
- Directive 2004/108/EC "Concerning harmonization of legislation of the member States in relation to electromagnetic compatibility and that repealed by Directive 89/336/EEC".
- Directive 89/391/EEC "Concerning the implementation of measures aimed at promoting the improvement of worker safety and health at work".
- Directive 2006/42/EC "Regarding machines and amendments of the Directive 95/16/EC".
- Directive 85/374/EEC and Directive 1999/34/EC "Regarding harmonization of the legislative, regulatory and administrative provisions of the member States regarding liability for damage caused by defective products".
- Directive 2002/95/EC "Concerning the use restrictions of certain hazardous substances in electrical and electronic equipment"
- Directive 2002/96/EC and 2003/108/EC "Concerning the disposal of electrical and electronic equipment (RAEE) and subsequent amendments."

1.5 LEGAL WARRANTY

The period of the warranty is in agreement with the European community standards and starts from the date of the invoice issued at the time of purchase.

Within such period all components that have unequivocal and well ascertained manufacturing flaws will be replaced or repaired free of charge exclusively **ex works**. The guarantee does not include electrical components and those subject to wear and tear.

Shipping costs and labour are not included in the warranty.

In order to make use of the legal warranty, the user must, as outlined in Directive 1999/44/EC, strictly observe the instructions contained in this manual.

1.6 MANUFACTURER LIABILITY



The manufacturer declines all civil and criminal liability, either direct or indirect, due to:

- installation that does not conform to local currently enforced regulations and safety directives
- non-observance of the instructions contained in this manual;
- installation by unqualified and untrained personnel;
- use that does not comply with safety directives;
- machine modifications and repairs not authorized by the Manufacturer;
- use of non-original spare parts or spare parts not specific to the hood model;
- lack of maintenance;
- extraordinary events.

1.7 SPARE PARTS

Use only original spare parts.

Do not wait until components are worn out before replacing them.

Replacing a worn component before breakage helps to prevent injuries deriving from accidents caused by unexpected component breakage, which could provoke serious damage to persons or property.



Execution of periodical maintenance controls as indicated in the chapter "MAINTENANCE AND CLEANING"



1.8 IDENTIFICATION PLATE

The identification label placed on the equipment contains all relevant data, including Manufacturer data, **serial number** and the **CE** marking.

1.9 HOOD DELIVERY

Inside of the package, in addition to the hood, there are also instructions for use, installation and maintenance, as well as the declaration of conformity in accordance with the machines directive.

2 SAFETY RECOMMENDATIONS

2.1 WARNINGS FOR THE MAINTENANCE OPERATOR



Observe the instructions indicated in this manual.

- Before starting any maintenance operations, make sure that the hood, if it was used, has cooled down.
- Disconnect electrical power before intervening on electrical or electronic parts and connectors.

DANGER



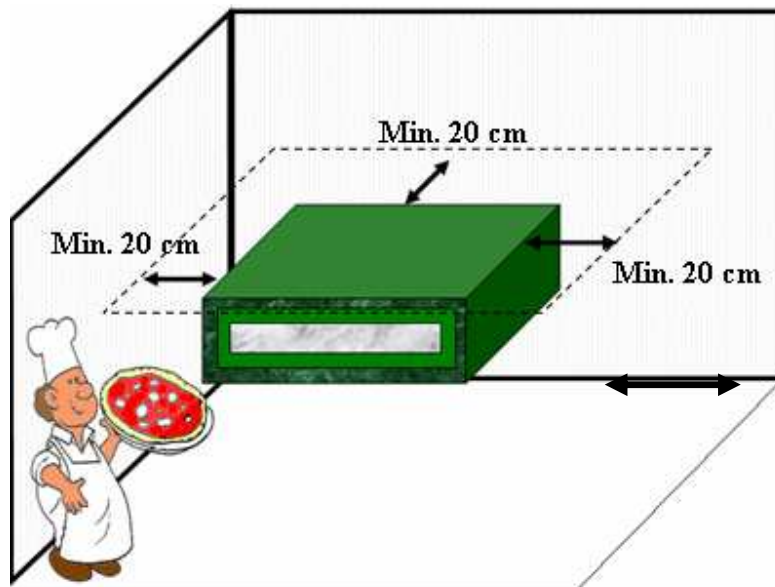
Be careful that children do not play with the packaging materials (for example, plastic film and polystyrene). Suffocation danger!

3 PREPARATION OF THE INSTALLATION AREA

3.1 HOOD INSTALLATION AREA

The following figure illustrates the minimum distances that must be respected when positioning the machine to facilitate use, cleaning and maintenance of the hood and for proper ventilation.

- ! Leave a free space of at least 20 cm between the hood and the walls of the room and/or other equipment.



4 INSTALLATION

Installation must be carried out by qualified personnel in compliance with local, national and European regulations.

4.1 HOOD POSITIONING

After unpacking the hood, remove any polystyrene protections and **take off the protective film (F)**. Do not use tools that could damage the surfaces. If any glue residue remains on the surface, remove it with a suitable, non-corrosive solvent.

Lift the hood, (consult the table in the technical data for the weight) and position it above the oven. Use the specific screws to fix the hood on the upper part of the oven cover, connecting the oven vapour vent to the hood conveyor.

The pipe to connect to the exhaust fan must be supplied by the installer after checking the specific structure of the room.

4.2 EQUIPMENT HOOK-UP

4.2.1 Electrical connection

The hood is supplied with a power cable not provided with a plug. When connecting the appliance electrically, a differential magnetothermic switch with suitable characteristics must be interposed, with an opening distance between the contacts of at least 3 mm. To connect the hood electrically it is essential to proceed in the following manner:

- Fit a 10A at 2P+T plug to the end of the power supply cable;
- connect the plug to the electrical mains.

The electrical outlet must be easy to access, no moving should be necessary.

- ! **The electrical connection must be easily accessible, also following hood installation.**

The distance between the hood and the socket must be adequate so that the power supply cable is not strained. In addition, the cable must not be located beneath the hood base.

- ! **If the power supply cable is damaged, it must be replaced by the technical assistance service or by a qualified technician to prevent any risks.**

4.2.1.1 Earth connection

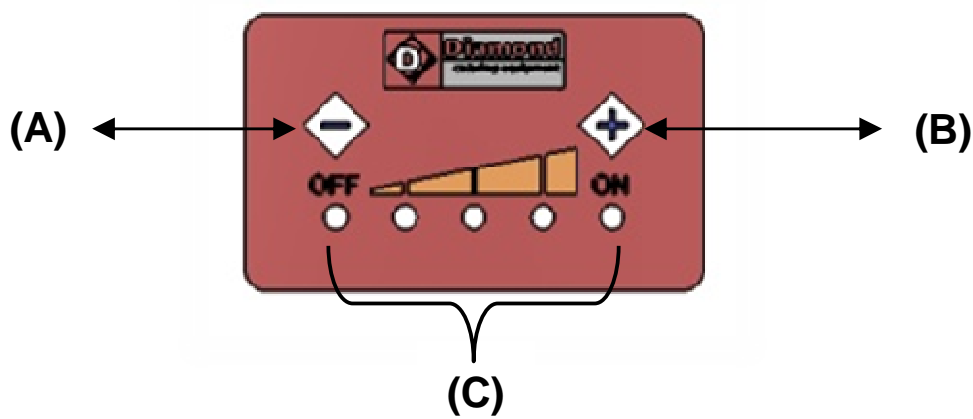
-  **It is mandatory that the electrical system is equipped with an earth connection.**

In compliance with current regulations, the equipment must be connected to an equipotential system whose efficiency must be correctly assessed according to applicable standards . The connection is made on a specific terminal located to the side of the black terminal block, with a cable with a minimum section of 10mm². This terminal is marked with the following symbol.



5 HOOD START UP AND USE

5.1 DESCRIPTION OF THE ELECTRONIC CARD



The hood's electronic card consists of:

- exhaust fan speed decrease and stop push-button **(A)**;
- exhaust fan speed increase and start push-button **(B)**;
- Reference LED **(C)**

5.2 TURNING ON THE HOOD

After connecting the hood to the electrical mains press the “+” push-button **(B)**. The first LED **(C)** on the left will light up and the exhaust fan will start to turn at the minimum speed.



5.3 WORKING PHASE

After the hood has started, the speed can be changed at any time by pressing the “+” button **(B)**. The card is used to set four different aspiration speeds, as displayed by four LEDs **(C)**.

To decrease the aspiration speed, press the “-“ button **(A)**.

5.4 SHUT-DOWN PHASE

To turn off the hood, press the “-“ button **(A)** until all LEDs have turned off **(C)**.

6 MAINTENANCE AND CLEANING

6.1 SAFETY PRECAUTIONS



Before performing any maintenance operations take the following precautions:

- Ensure that the hood is off and has completely cooled down.
- Ensure that the hood is disconnected from electricity supply.
- Make sure that the electrical power cannot be accidentally reactivated. Disconnect the plug from the socket;
- Use individual devices in compliance with the directive 89/391/EEC;
- Always use appropriate maintenance tools;
- once maintenance and repairs are finished, before restarting the hood, reinstall all of the protections and reactivate all of the safety devices.

6.1.1 Cleaning the hood

The machine must be cleaned at the end of each use, in compliance with the hygiene regulations and to safeguard machine operation.

The external surface of the hood, the external parts in stainless steel must be cleaned when the hood is cold and with the electric power supply disconnected.

Use a sponge or a non-abrasive soft cloth slightly moistened with water or possibly with a non-corrosive neutral detergent. In any case, do not use water jets that can penetrate the electric parts, damaging them seriously and causing a possible hazard for people.

7 ALARMS AND POSSIBLE FAULTS

OPERATING FAULTS		
Fault	Possible Causes	Remedy
The hood does not turn on and the card LEDs do not light up	Lack of mains power	Check the main switch, socket, plug and power supply cable
The hood exhaust fan does not turn on and the card LEDs do not light up	The “+” start button was not pressed	Press the “+” button until the first LED turns on
The LEDs do not turn on even though the “+” push-button was pressed and the electric power supply is present	Electronic card defective	Replace the electronic card

8 INFORMATION FOR DEMOLITION AND DISPOSAL

Demolition and disposal of the machine is the sole responsibility of the owner, who must perform these tasks in compliance with laws in force pertaining to safety and environmental protection in the country where the machine is installed.

Disassembly and disposal can also be performed by a third party, as long as an authorized entity is used for the recovery and demolition of the materials in question.



INSTRUCTION: *always adhere to the laws in force pertaining to disposal of materials in the country where the machine is installed , and any possible necessity for registration of demolition.*



WARNING: *All disassembly operations for demolition must take place when the machine is off and disconnected from the electrical power supply:*

- *remove all electric system components*
- *separate the accumulators on the electronic cards;*
- *dispose of the machine structure through authorized entities;*



WARNING: *Abandoning the machine in accessible areas constitutes grave danger for persons and animals.*

The owner is exclusively liable for any damage to persons and animals.

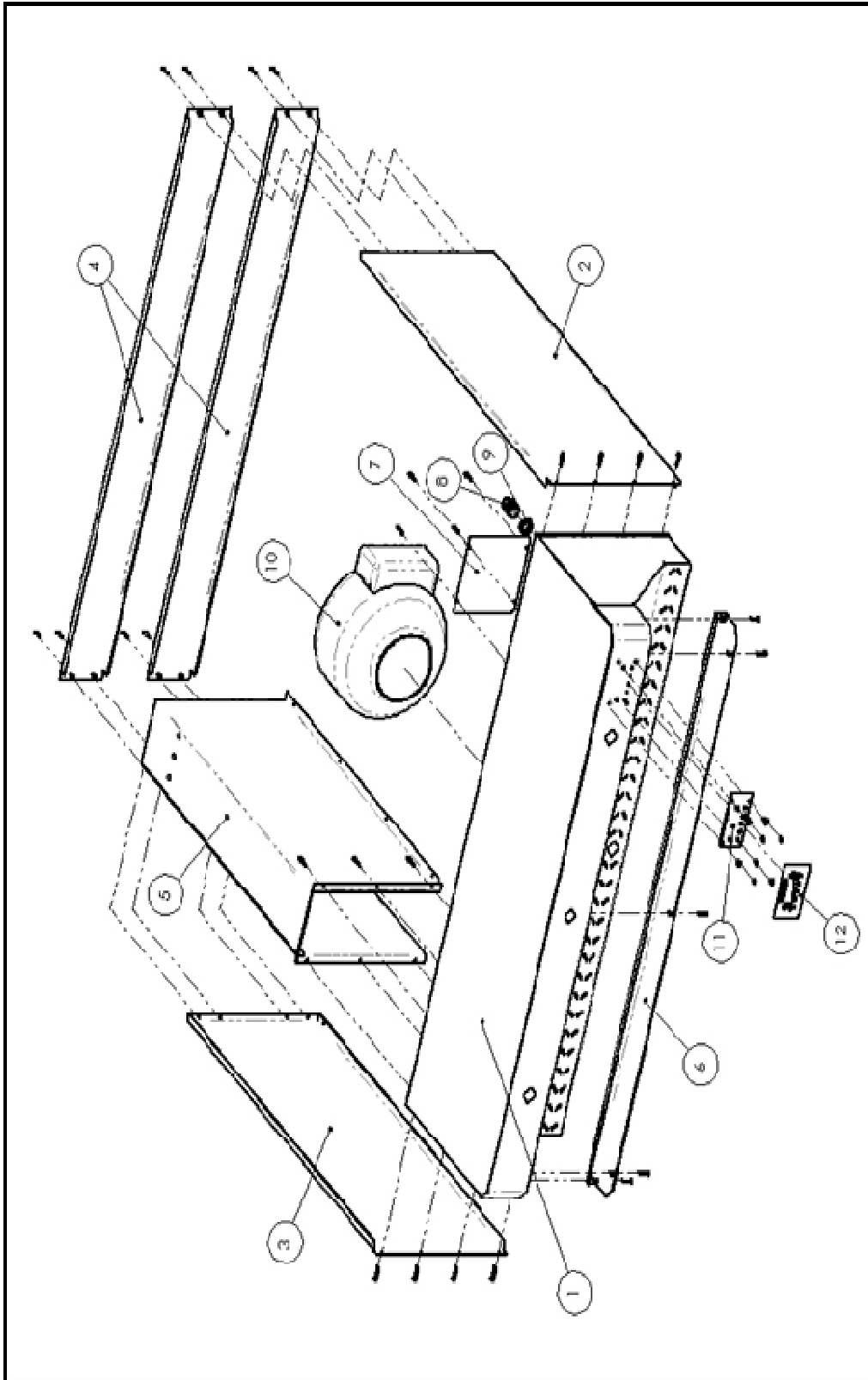
USER INFORMATION



The equipment falls under application of the European Directives 2002/95/CE, 2002/96/CE, 2003/108/CE which states to never dispose of this product together with normal domestic waste. To prevent any possible damage to the environment or to human health, please keep this product separately from other waste so it can be recycled safely from an environmental point of view.

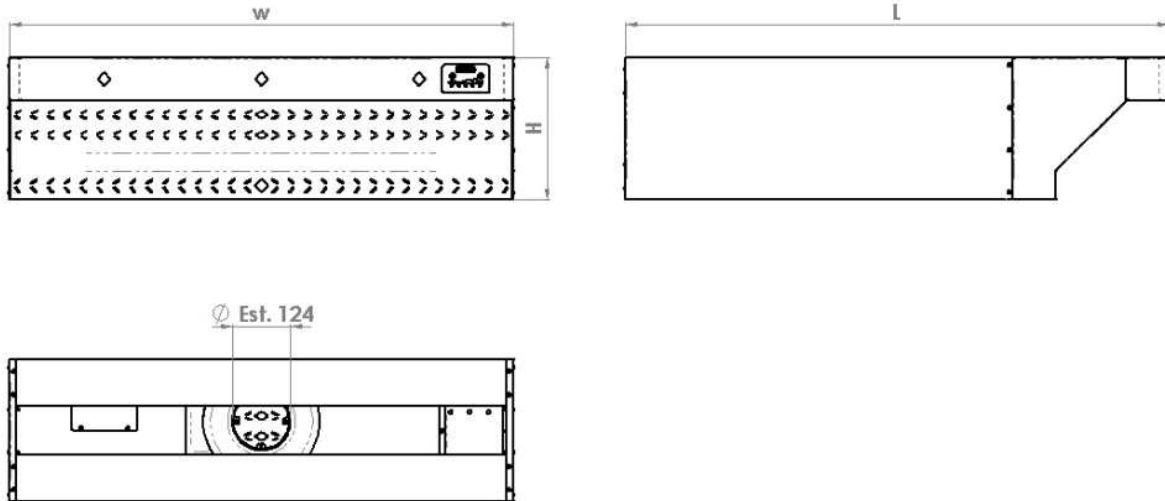
For more information about collection centers please contact the town office or the dealer you bought the product from.

9 EXPLODED SPARE PARTS VIEW



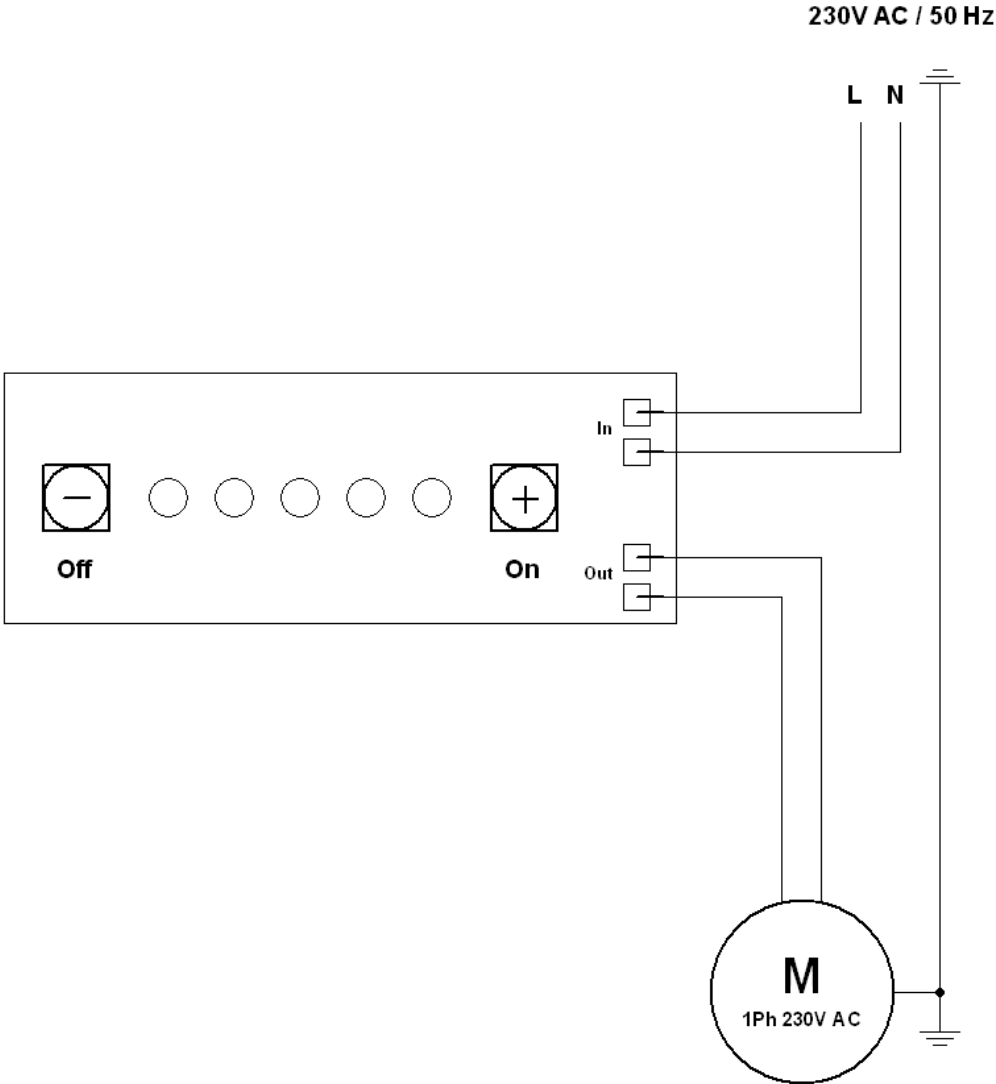
PIÈCES DE RECHANGE				
Modèle				
	Logic Plus 4÷8	Logic Plus 6÷12	Logic Plus 6L÷12L	Logic Plus 9÷18
	KLD4/35AS-N	KLD6/35AS-N	KLD6/35XLAS-N	KLD9/35AS-N
Pos.				
1	S65CA58009	S65CA58009	S65CA58010	S65CA58010
2	S60CA64001	S60CA58005	S60CA64001	S60CA58005
3	S60CA64005	S60CA58006	S60CA64005	S60CA58006
4	S74CA58001	S74CA58001	S74CA58003	S74CA58003
5	S66SA58001	S66SA58002	S66SA58001	S66SA58002
6	S40FT58001	S40FT58001	S40FT58003	S40FT58003
7	S74CA58007	S74CA58007	S74CA58007	S74CA58007
8	A86EL46002	A86EL46002	A86EL46002	A86EL46002
9	A86EL46002	A86EL46002	A86EL46002	A86EL46002
10	A87AS55002	A87AS55002	A87AS55002	A87AS55002
11	A88SE00002	A88SE00002	A88SE00002	A88SE00002
12	A93OL93004	A93OL93004	A93OL93004	A93OL93004

10 TECHNICAL DATA



Model	Weight (Kg)	Width W (mm)	Depth L (mm)	Height H (mm)	Total power (W)	Type of power supply	Power supply voltage at 50 Hz (V)	Flow rate with open exhaust (m ³ /h)	Max speed (revs/1')	Sound pressure (dB(A))	Max absorption (A)
LOGIC LINE PLUS 4÷8 KLD4/35AS-N		1070	1155	300	70	2 P+N	<u>230</u>	245	1700	42	0.34
LOGIC LINE PLUS 6÷12 KLD6/35AS-N		1070	1405	300	70	2 P+N	230	245	1700	42	0.34
LOGIC LINE PLUS 6L÷12L KLD6/35XLAS-N		1070	1155	300	70	2 P+N	230	245	1700	42	0.34
LOGIC LINE PLUS 9÷18 KLD9/35AS-N		1070	1405	300	70	2 P+N	230	245	1700	42	0.34

11 WIRING DIAGRAM





01-01-2013